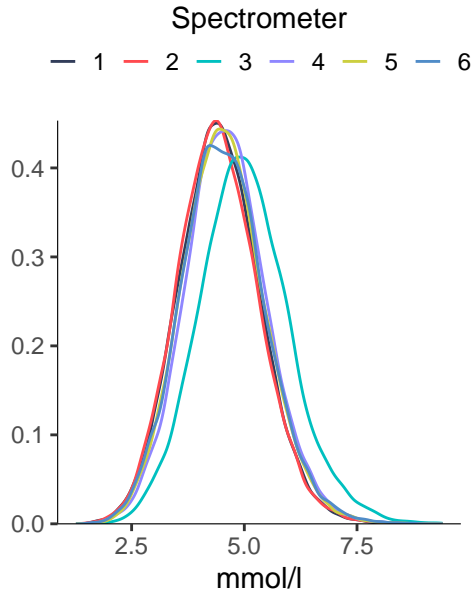
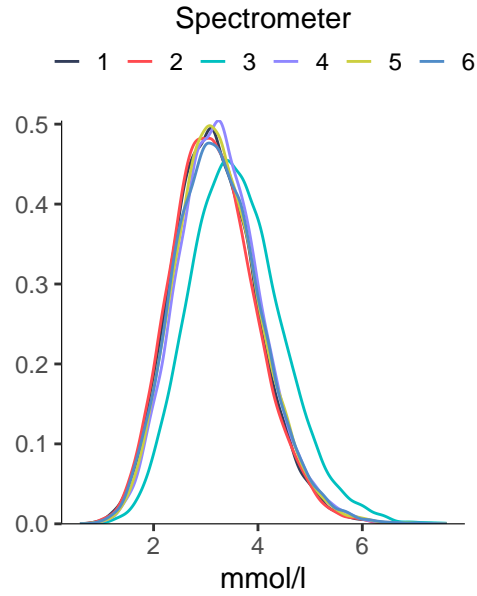


Cholesterol

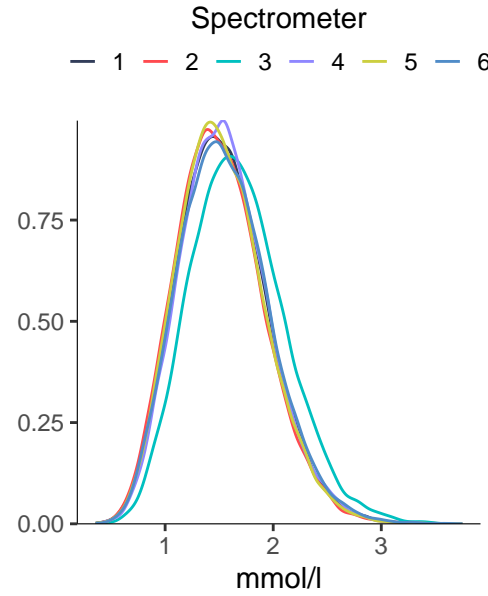
Total_C



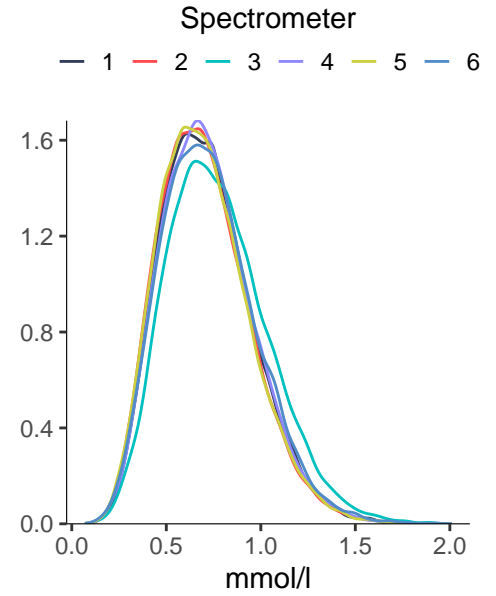
non_HDL_C



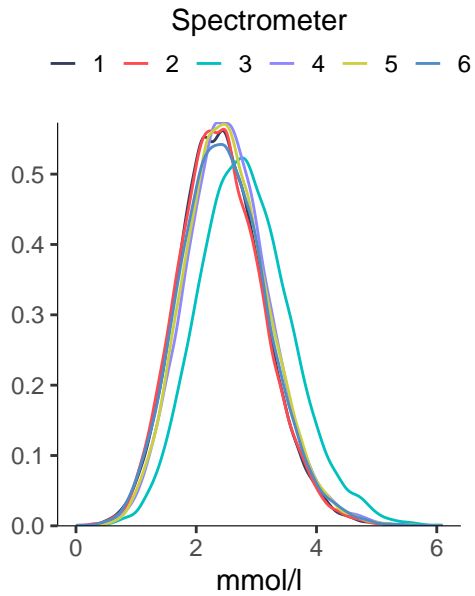
Remnant_C



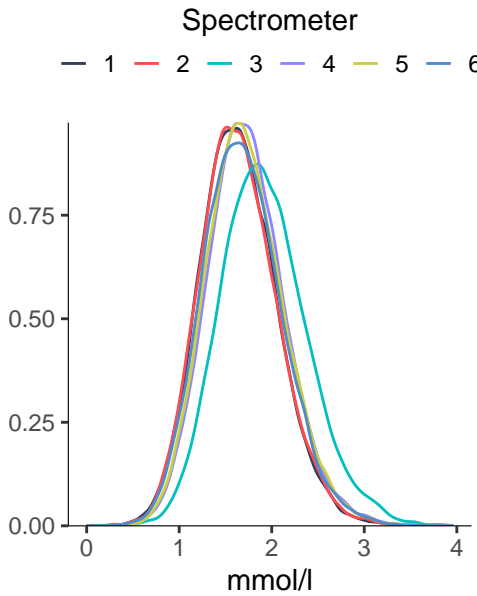
VLDL_C



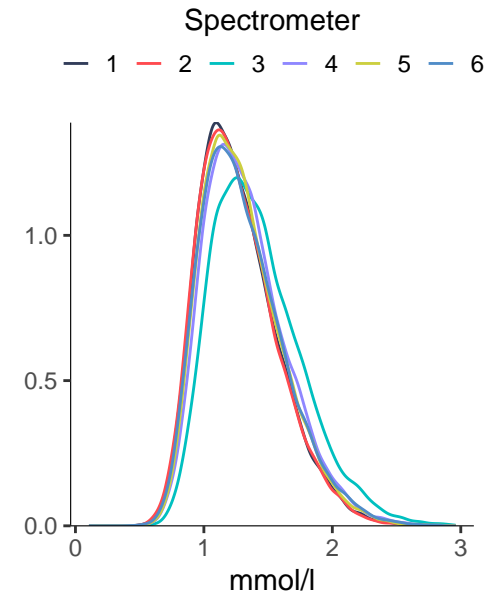
Clinical_LDL_C



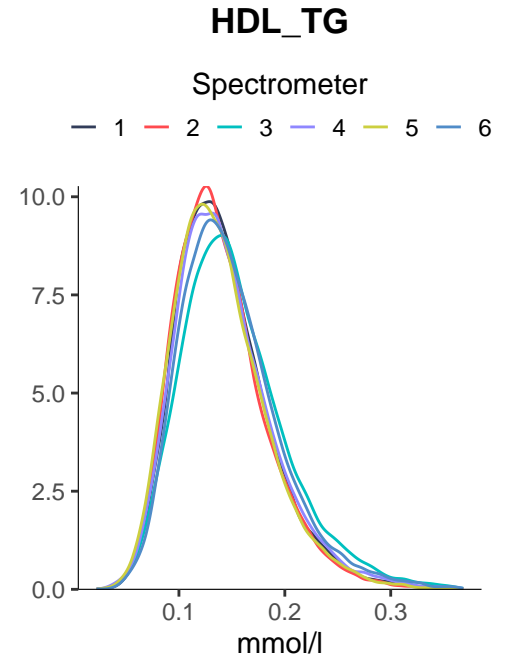
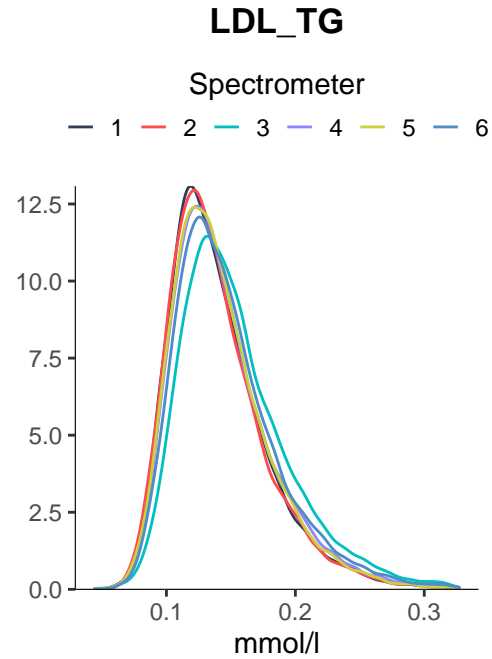
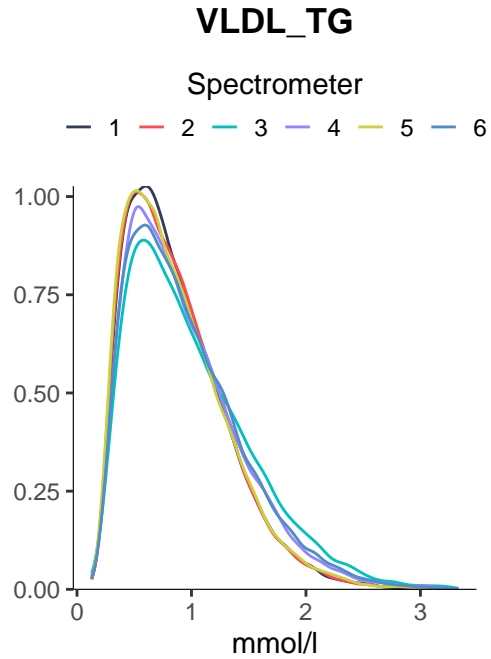
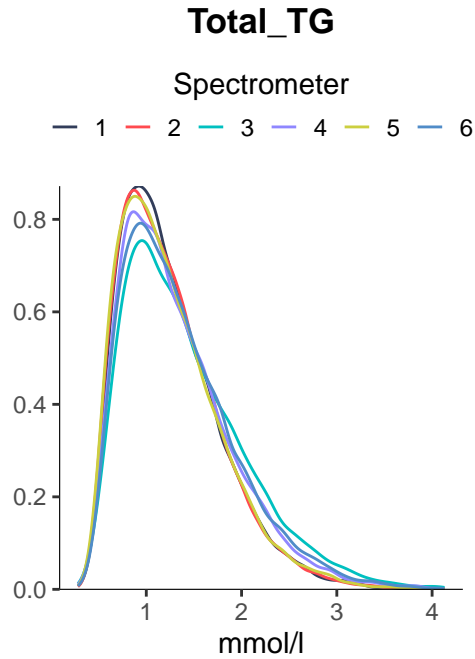
LDL_C



HDL_C



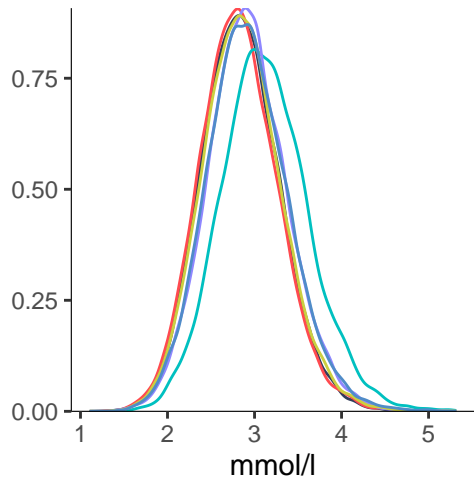
Triglycerides



Phospholipids

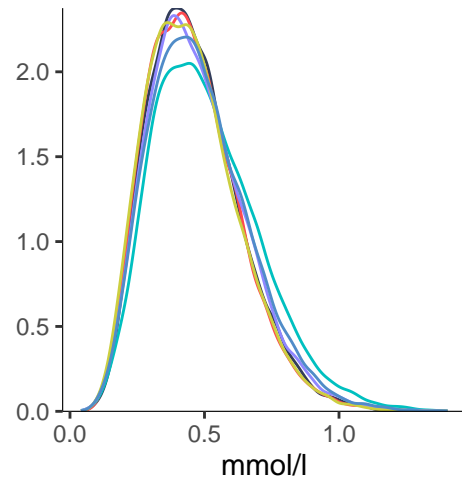
Total_PL

Spectrometer
— 1 — 2 — 3 — 4 — 5 — 6



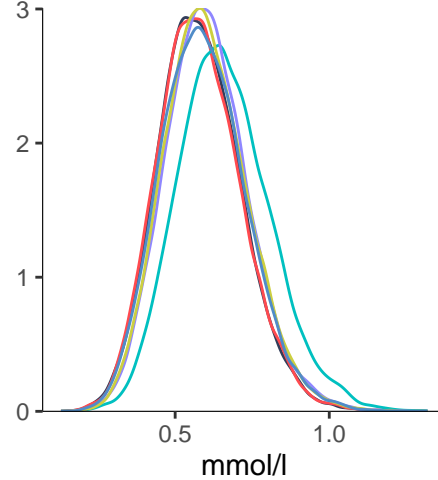
VLDL_PL

Spectrometer
— 1 — 2 — 3 — 4 — 5 — 6



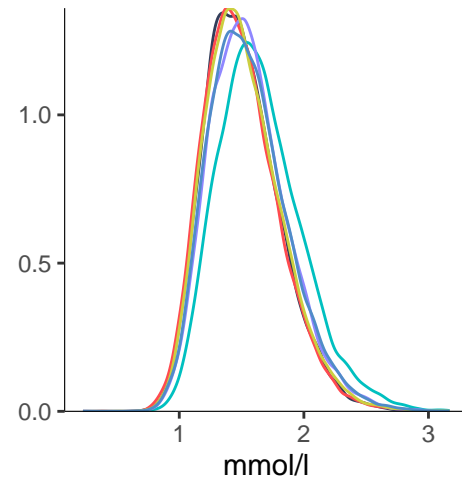
LDL_PL

Spectrometer
— 1 — 2 — 3 — 4 — 5 — 6

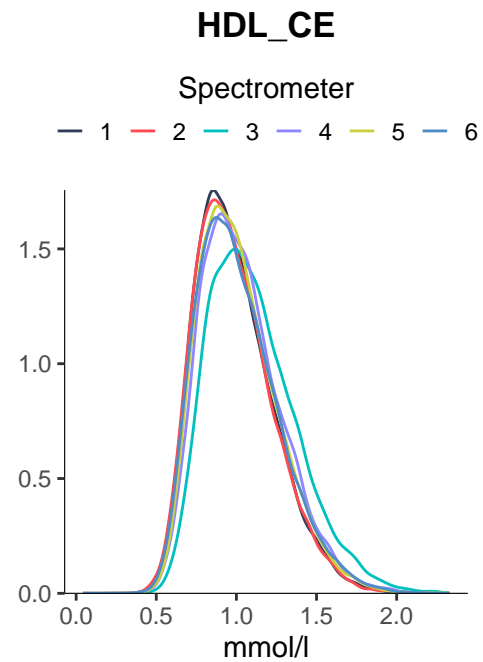
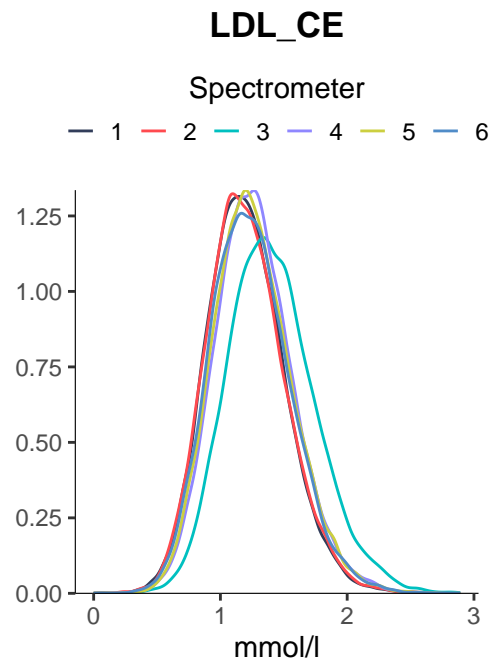
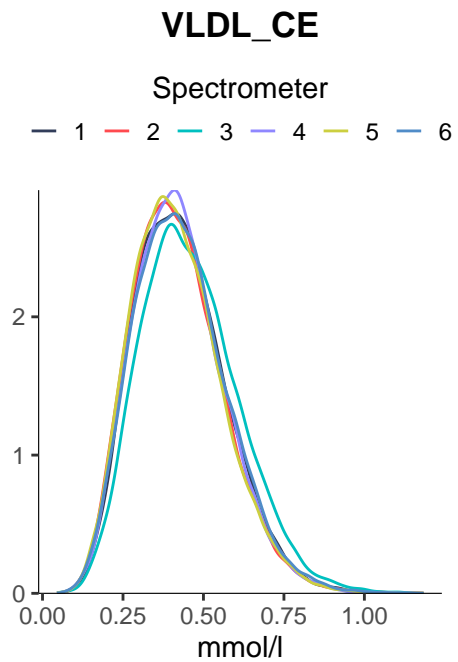
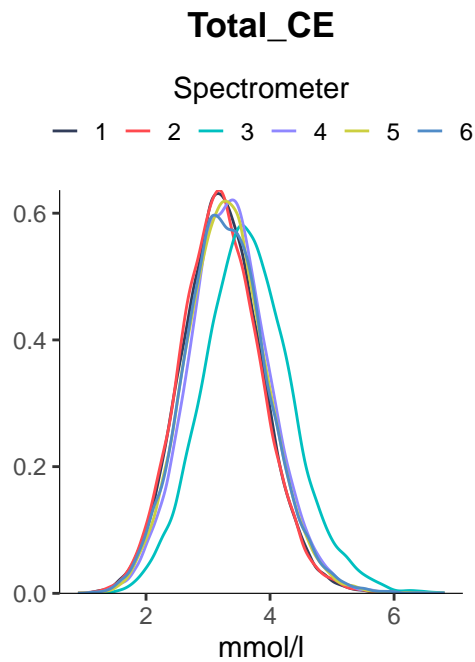


HDL_PL

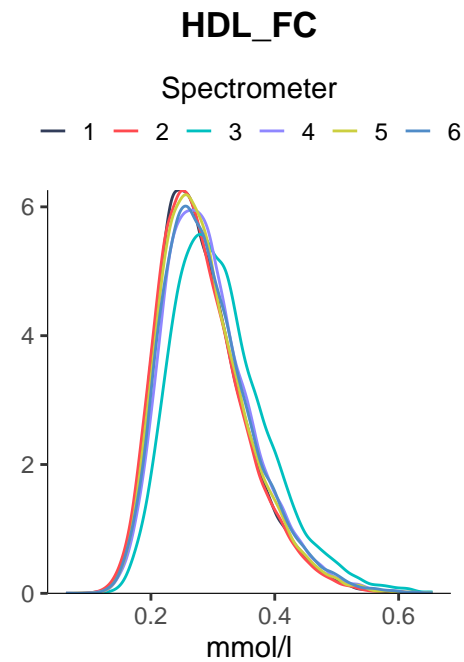
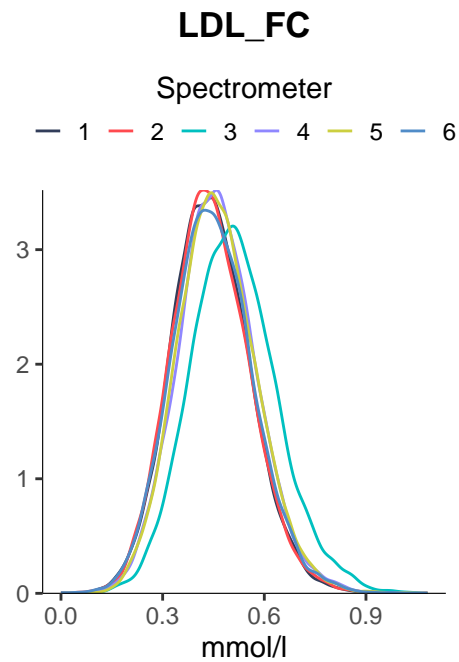
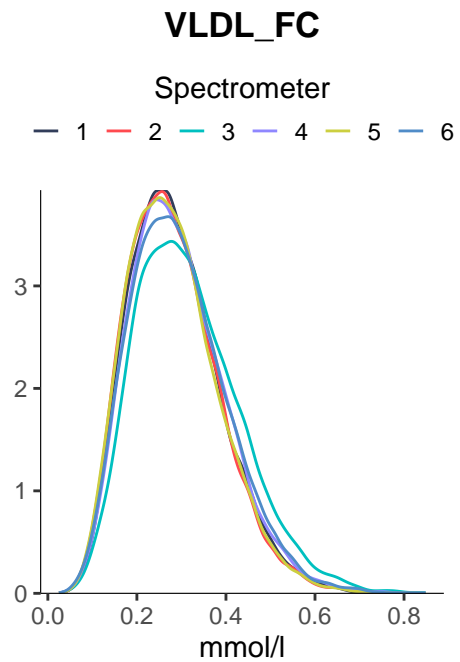
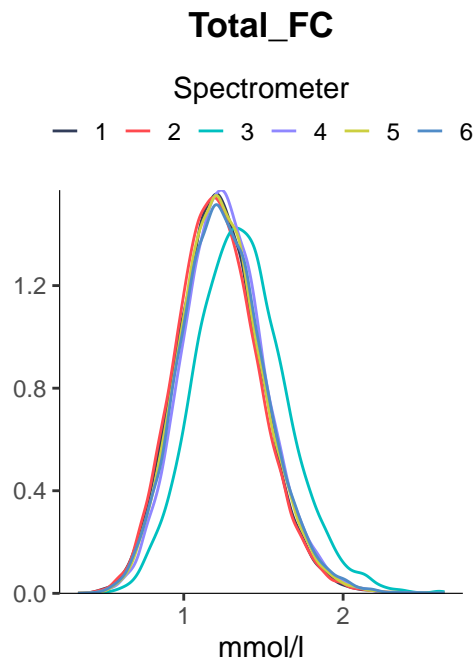
Spectrometer
— 1 — 2 — 3 — 4 — 5 — 6



Cholesteryl esters



Free cholesterol

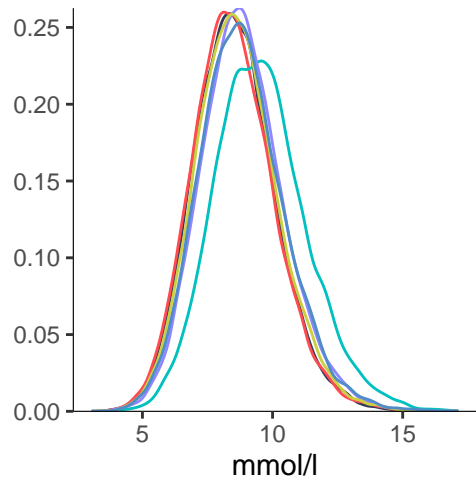


Total lipids

Total_L

Spectrometer

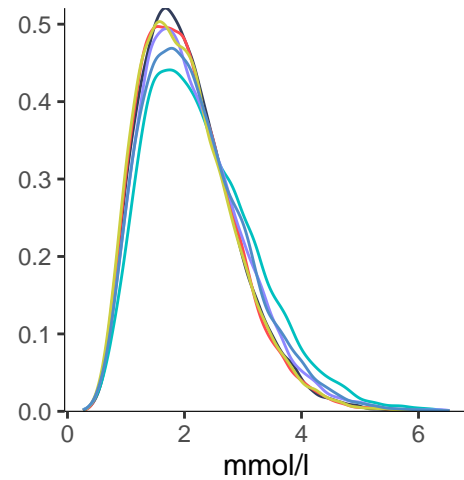
— 1 — 2 — 3 — 4 — 5 — 6



VLDL_L

Spectrometer

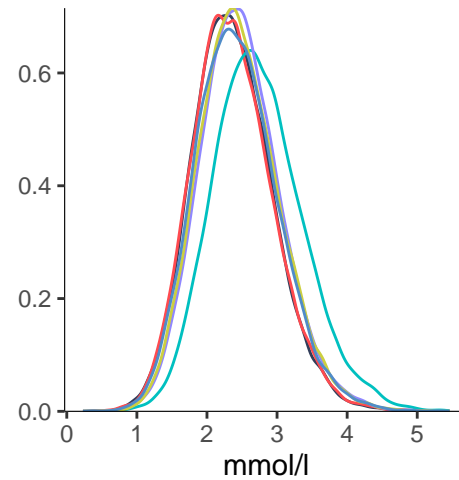
— 1 — 2 — 3 — 4 — 5 — 6



LDL_L

Spectrometer

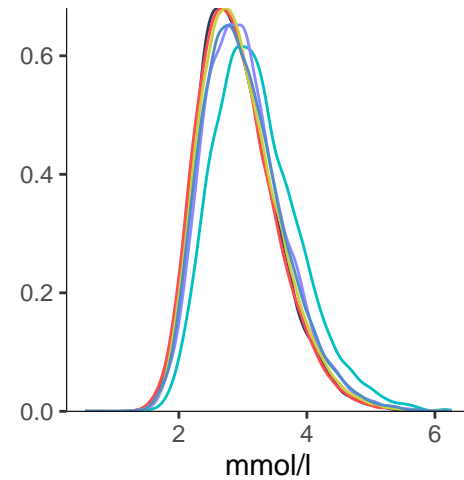
— 1 — 2 — 3 — 4 — 5 — 6



HDL_L

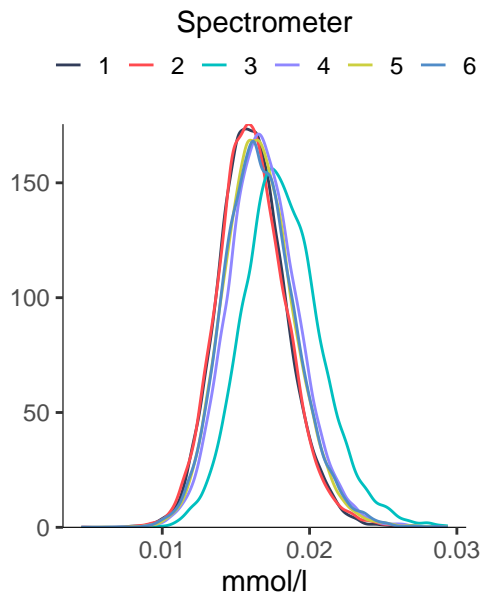
Spectrometer

— 1 — 2 — 3 — 4 — 5 — 6

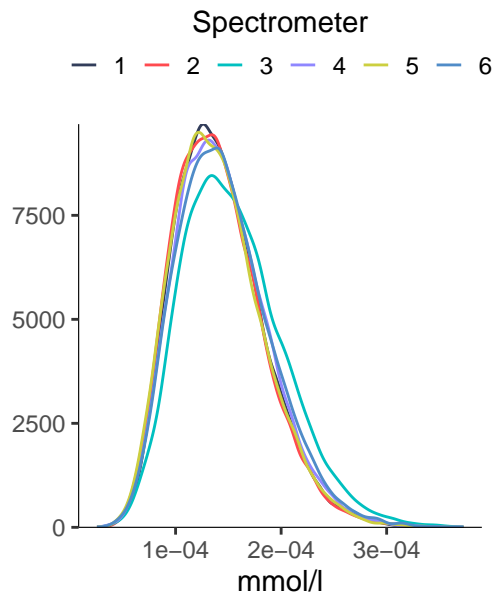


Lipoprotein particle concentrations

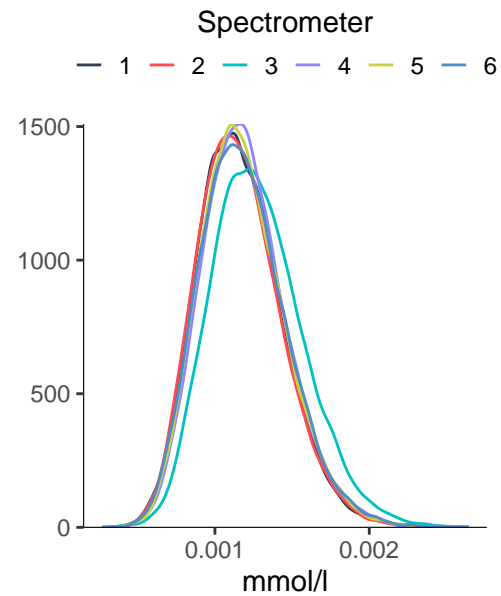
Total_P



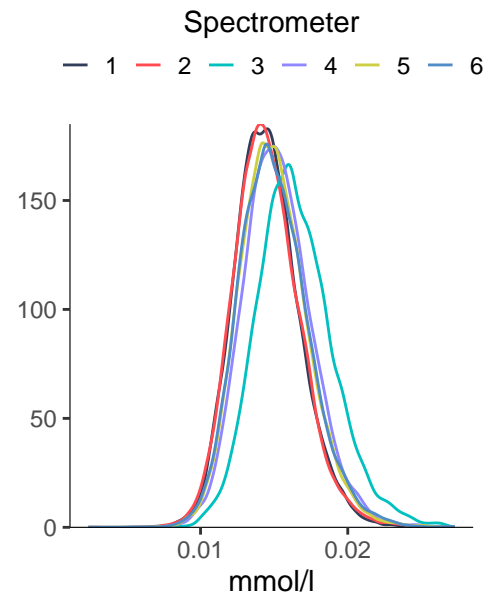
VLDL_P



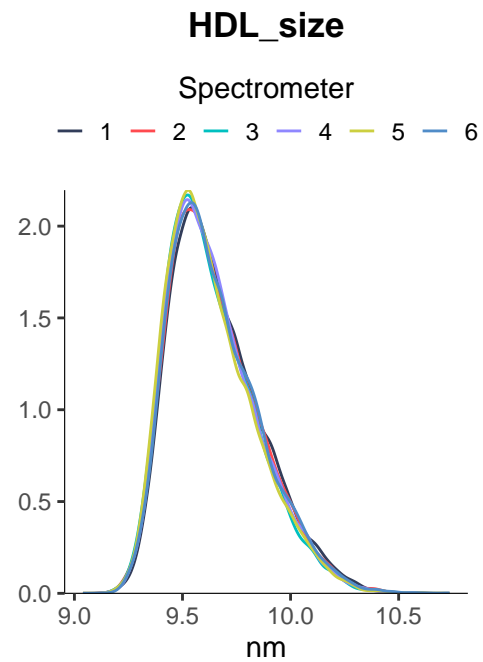
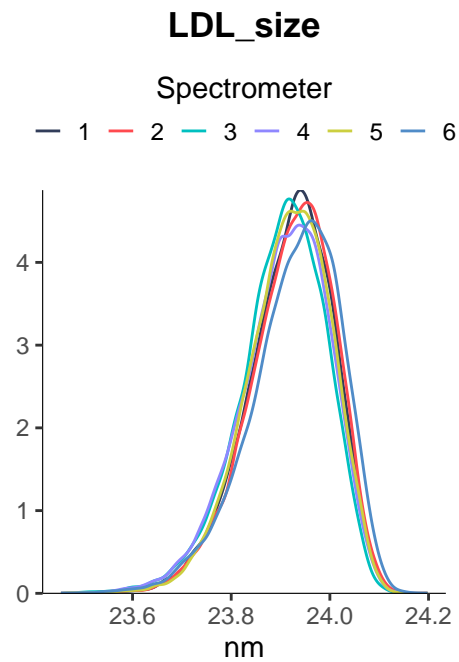
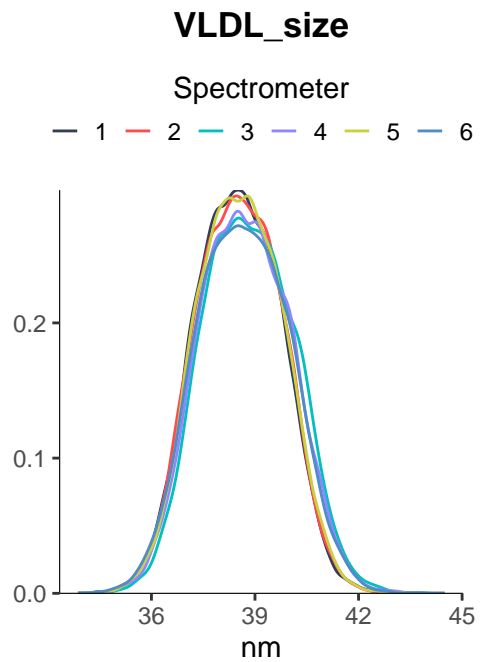
LDL_P



HDL_P



Lipoprotein particle sizes

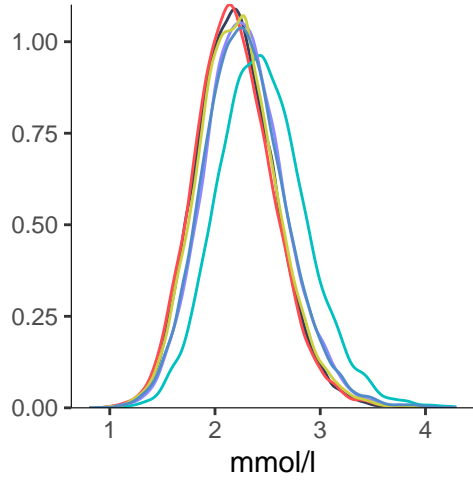


Other lipids

Phosphoglyc

Spectrometer

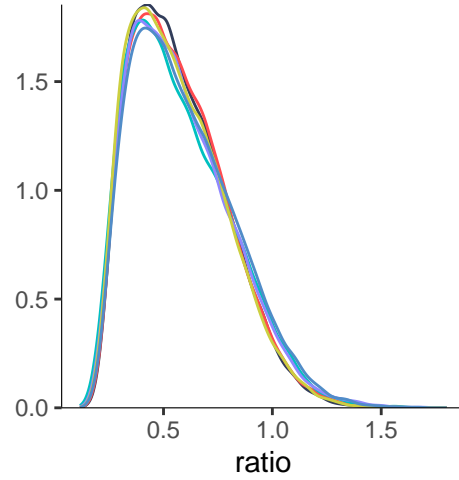
— 1 — 2 — 3 — 4 — 5 — 6



TG_by_PG

Spectrometer

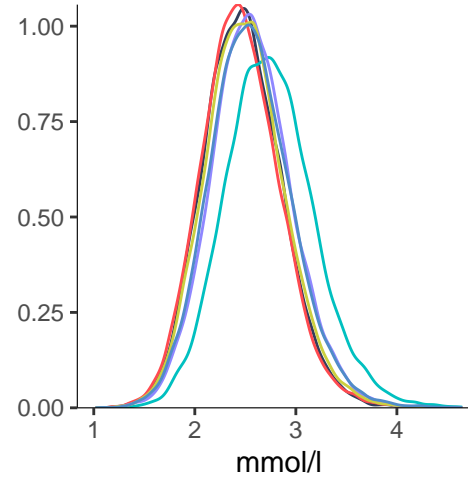
— 1 — 2 — 3 — 4 — 5 — 6



Cholines

Spectrometer

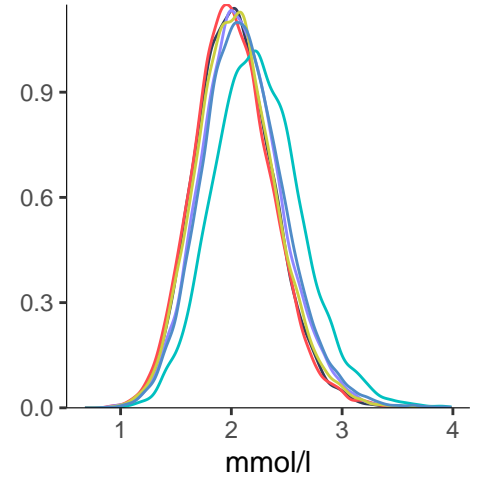
— 1 — 2 — 3 — 4 — 5 — 6



Phosphatidylc

Spectrometer

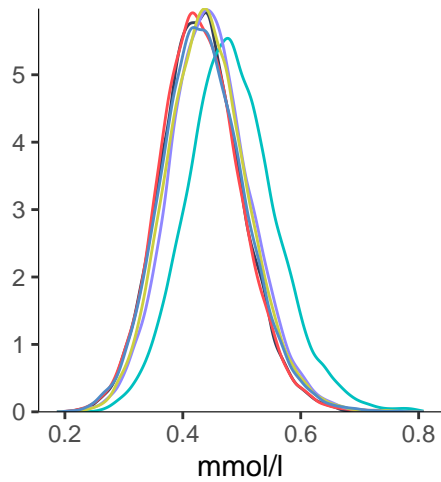
— 1 — 2 — 3 — 4 — 5 — 6



Sphingomyelins

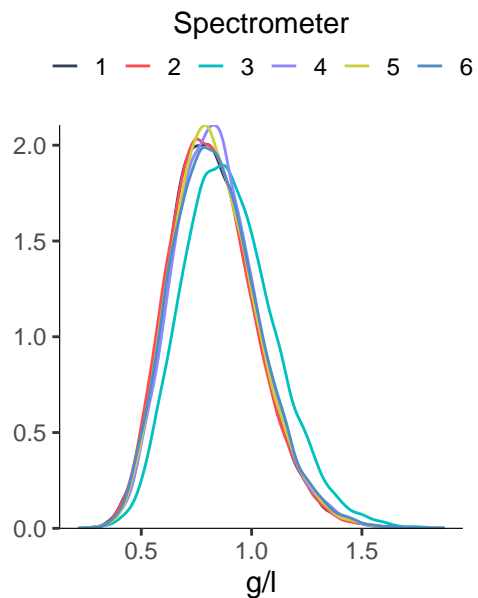
Spectrometer

— 1 — 2 — 3 — 4 — 5 — 6

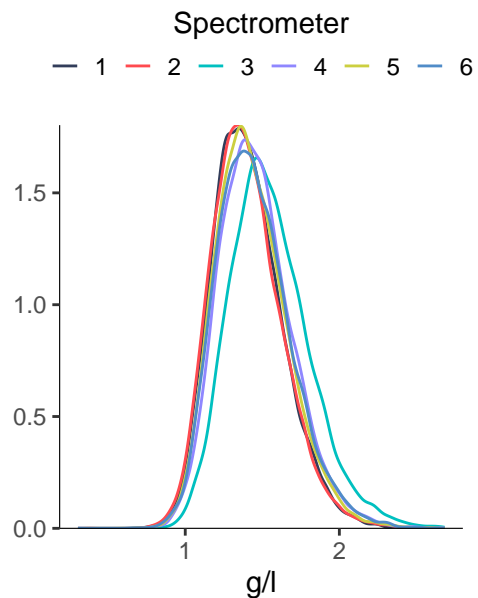


Apolipoproteins

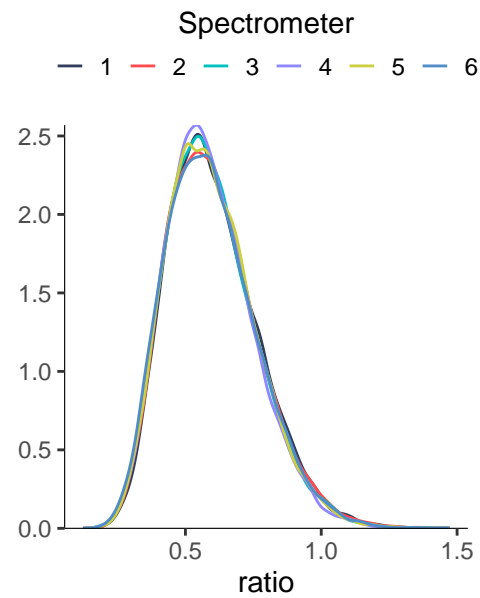
ApoB



ApoA1

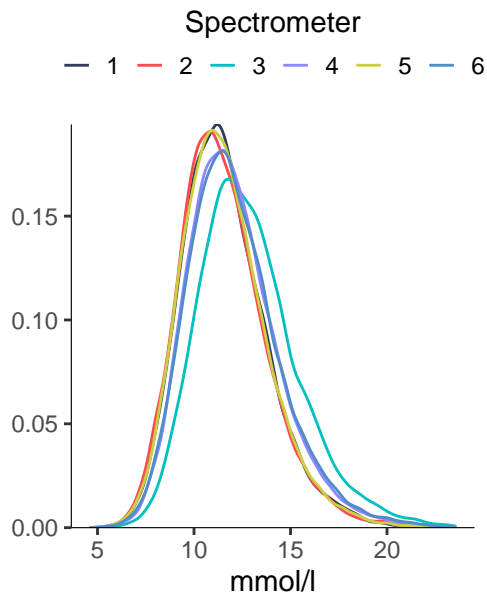


ApoB_by_ApoA1

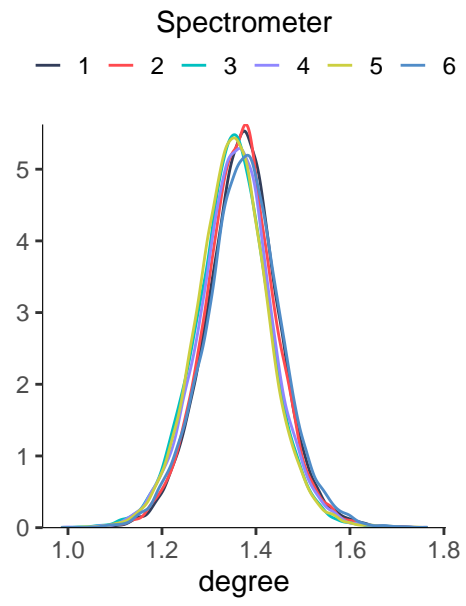


Fatty acids

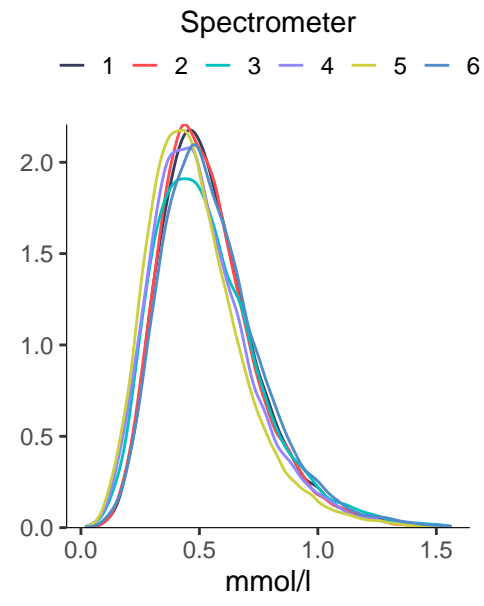
Total_FA



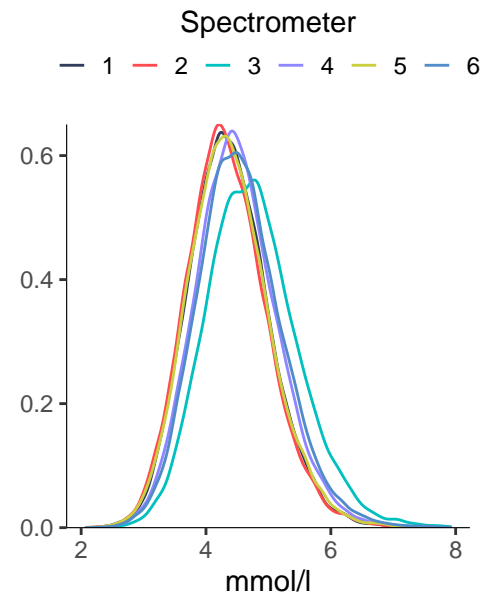
Unsaturation



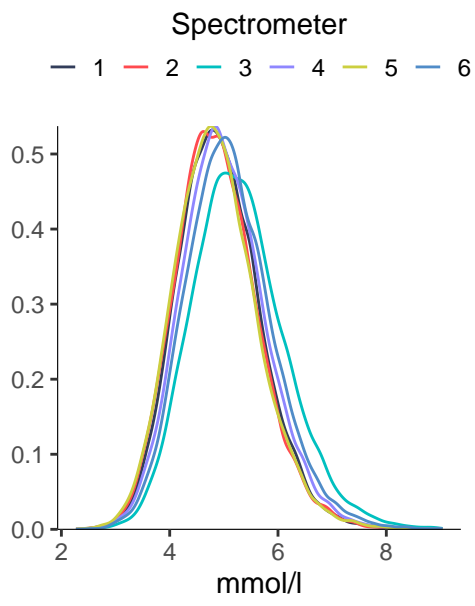
Omega_3



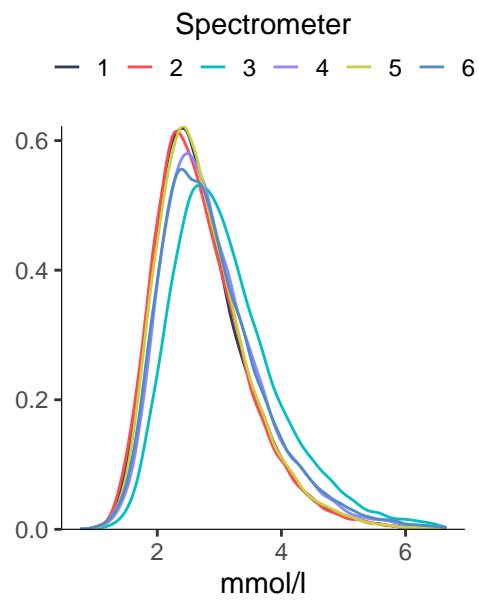
Omega_6



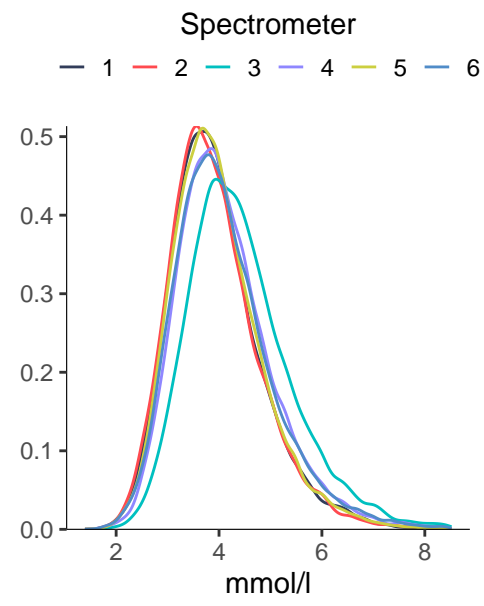
PUFA



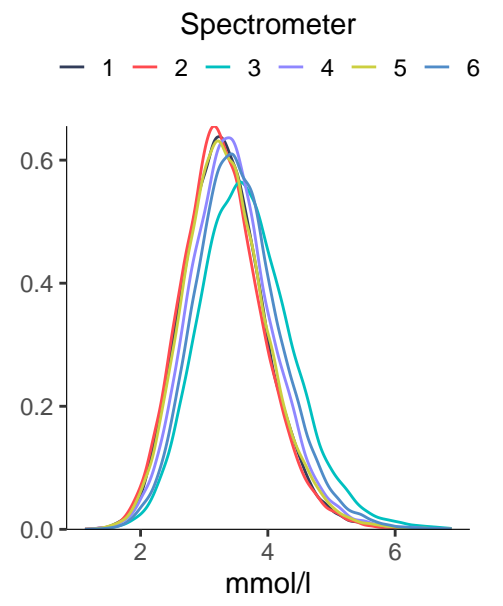
MUFA



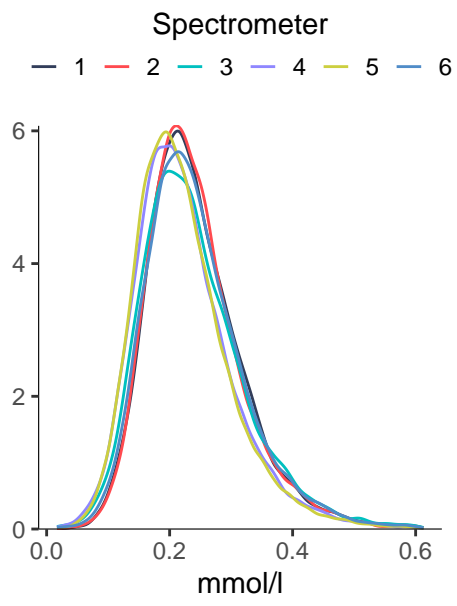
SFA



LA

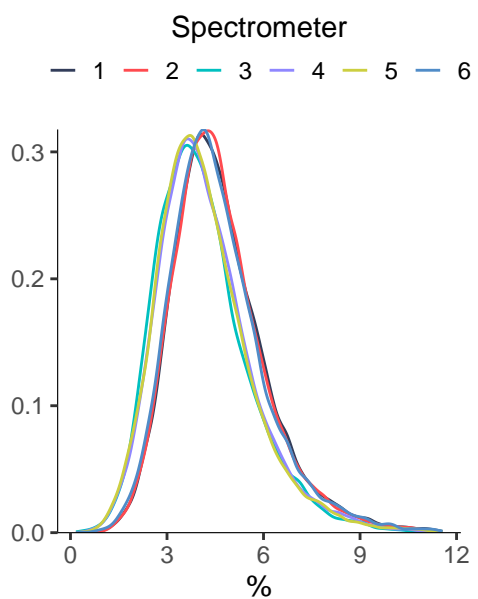


DHA

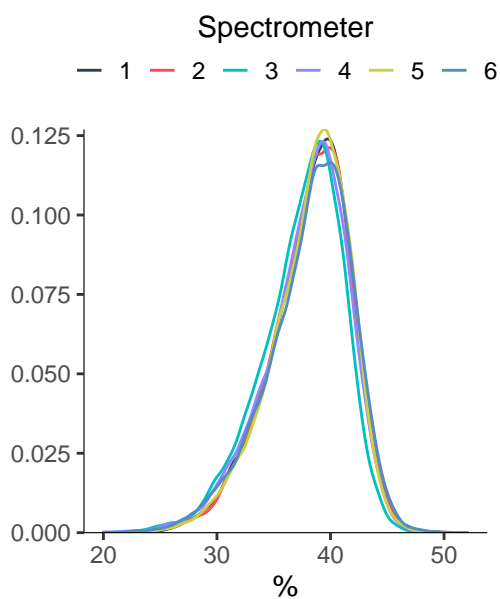


Fatty acid ratios

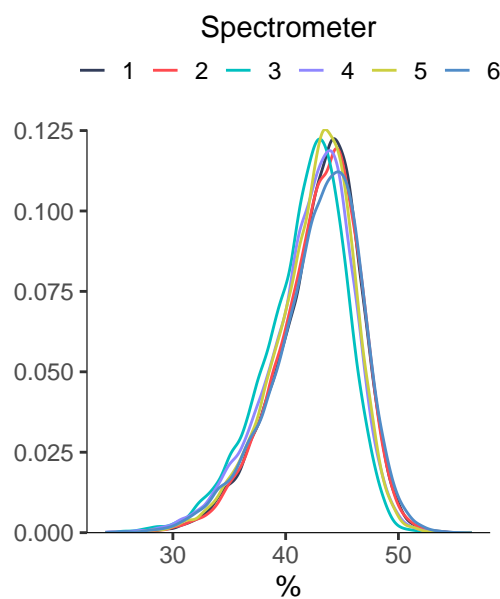
Omega_3_pct



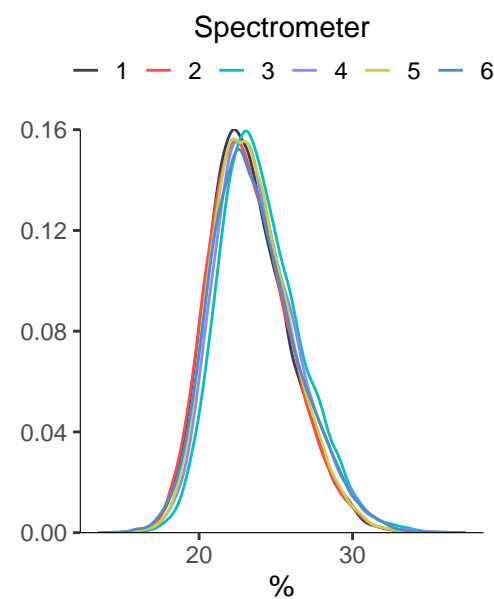
Omega_6_pct



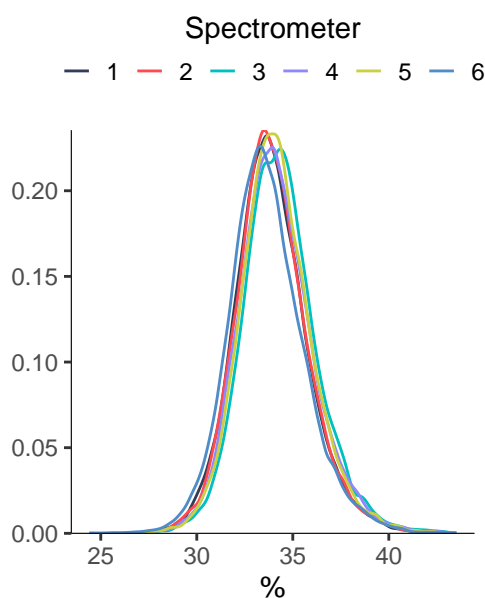
PUFA_pct



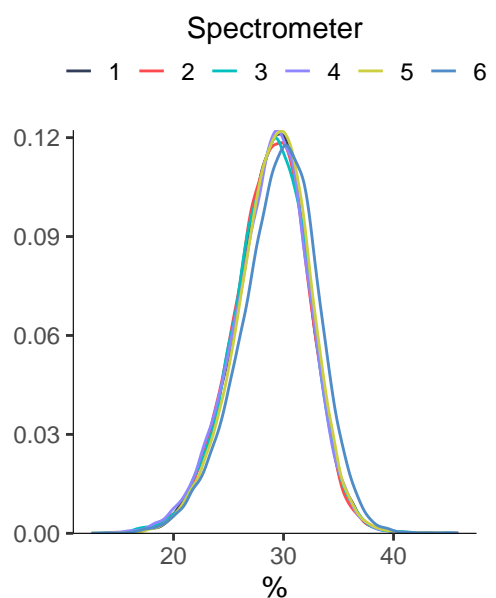
MUFA_pct



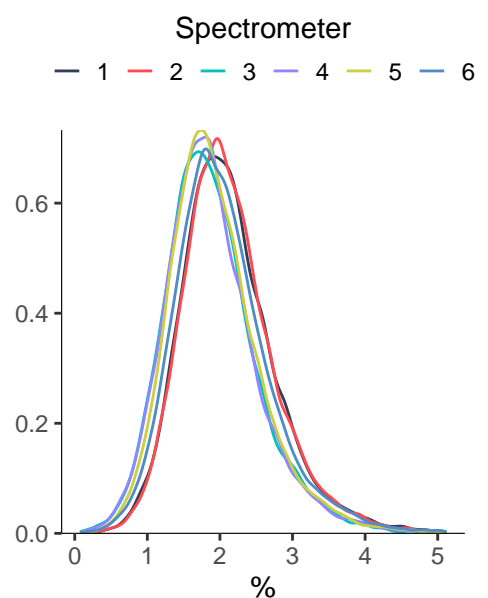
SFA_pct



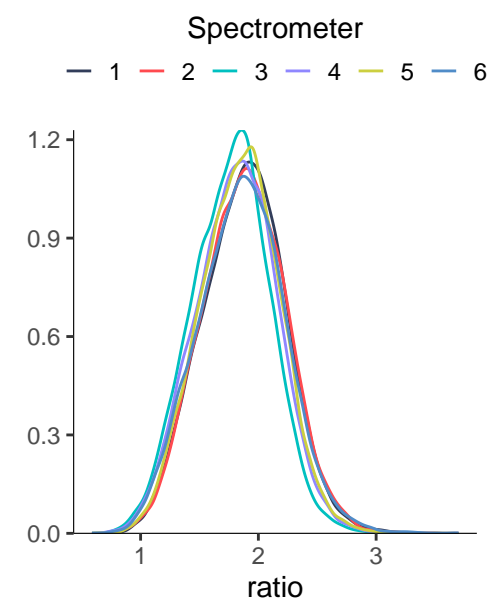
LA_pct



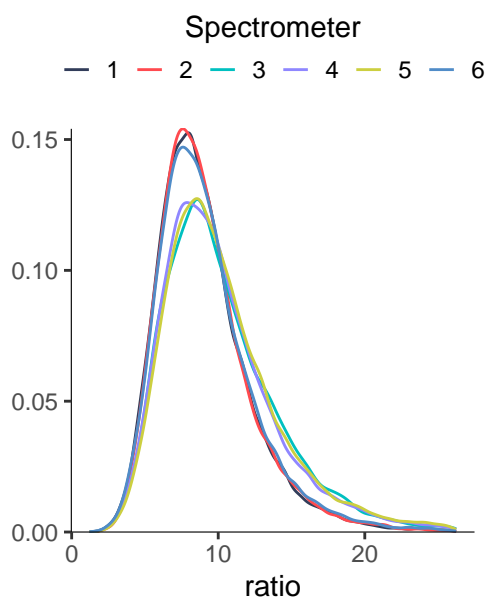
DHA_pct



PUFA_by_MUFA



Omega_6_by_Omega_3



Amino acids

Ala

Gln

Gly

His

Spectrometer

Spectrometer

Spectrometer

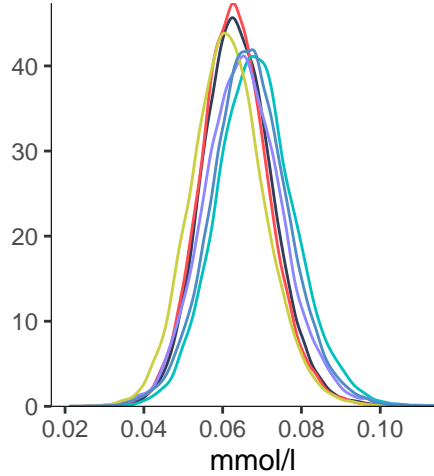
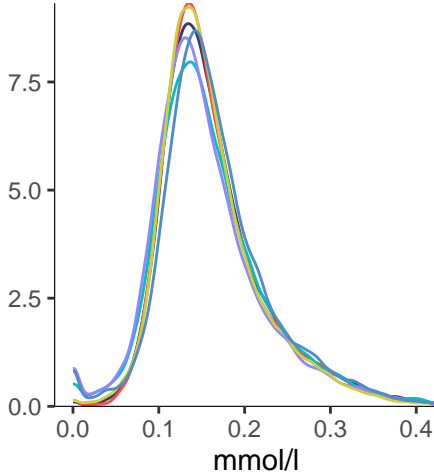
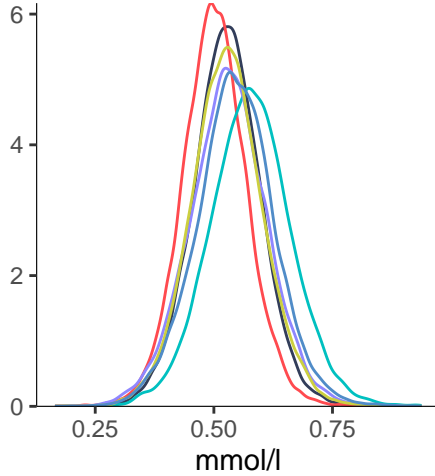
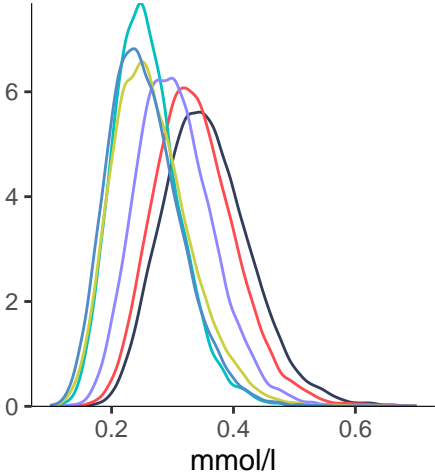
Spectrometer

— 1 — 2 — 3 — 4 — 5 — 6

— 1 — 2 — 3 — 4 — 5 — 6

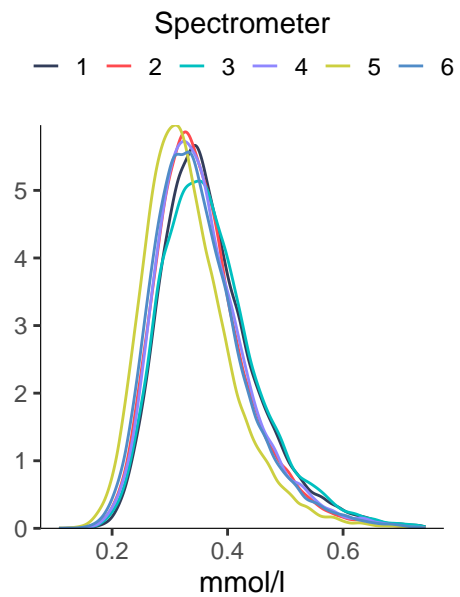
— 1 — 2 — 3 — 4 — 5 — 6

— 1 — 2 — 3 — 4 — 5 — 6

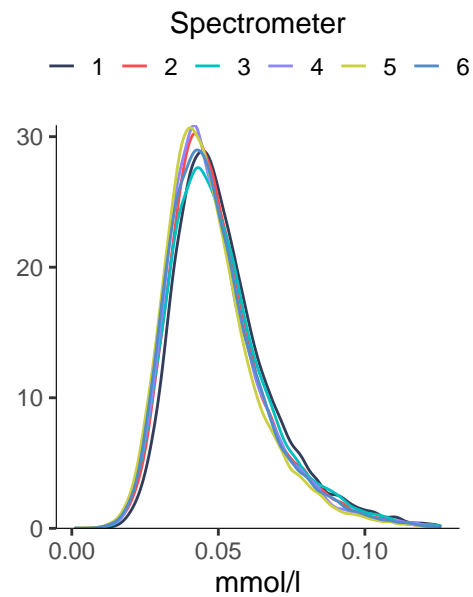


Branched-chain amino acids

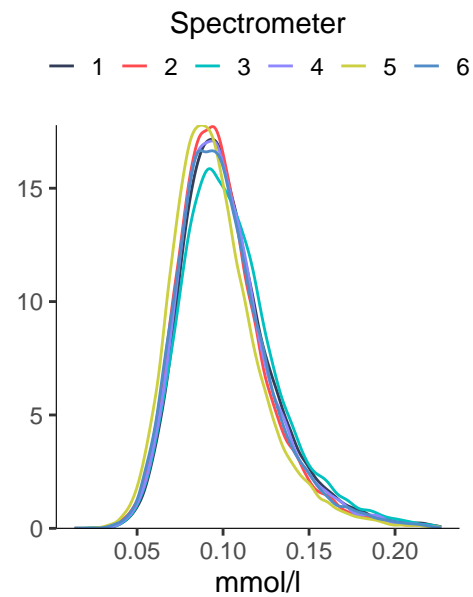
Total_BCAA



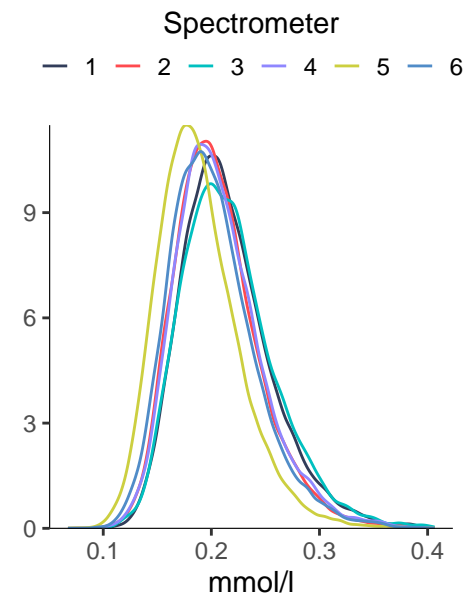
Ile



Leu



Val

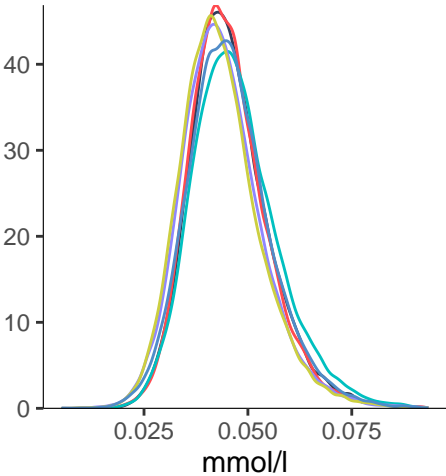


Aromatic amino acids

Phe

Spectrometer

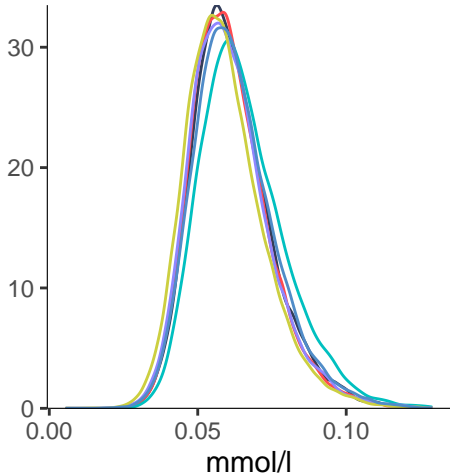
— 1 — 2 — 3 — 4 — 5 — 6



Tyr

Spectrometer

— 1 — 2 — 3 — 4 — 5 — 6

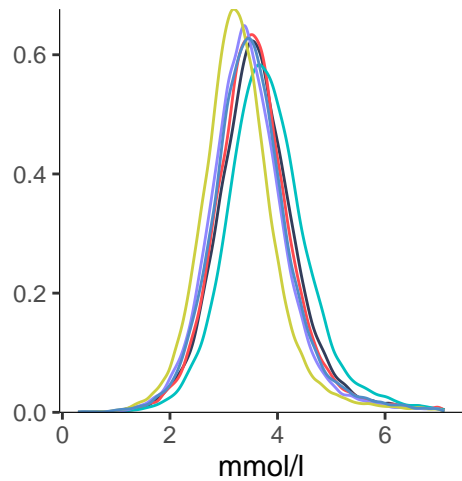


Glycolysis related metabolites

Glucose

Spectrometer

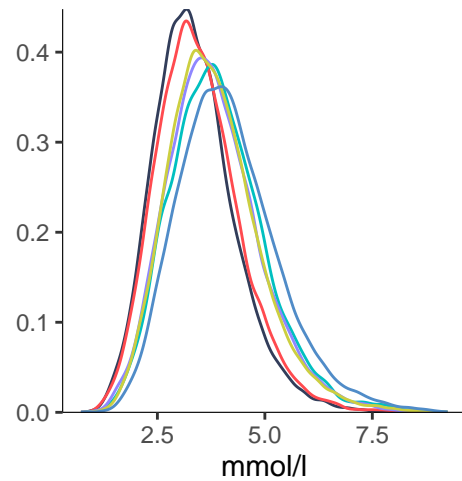
— 1 — 2 — 3 — 4 — 5 — 6



Lactate

Spectrometer

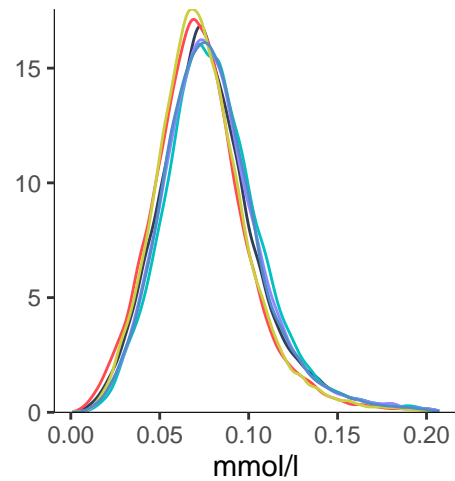
— 1 — 2 — 3 — 4 — 5 — 6



Pyruvate

Spectrometer

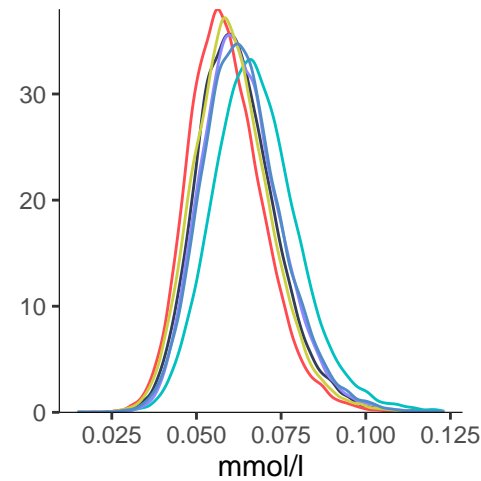
— 1 — 2 — 3 — 4 — 5 — 6



Citrate

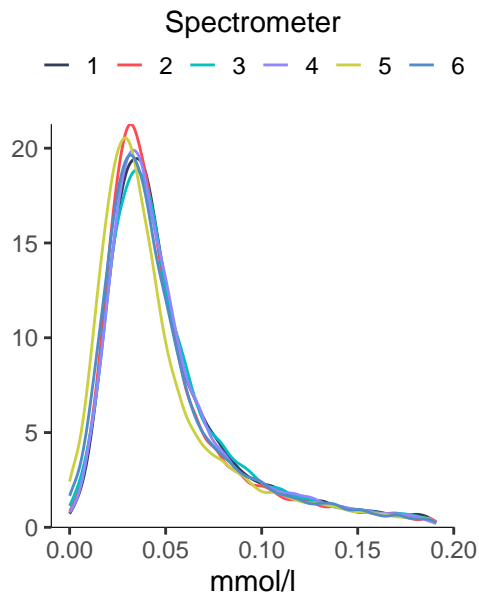
Spectrometer

— 1 — 2 — 3 — 4 — 5 — 6

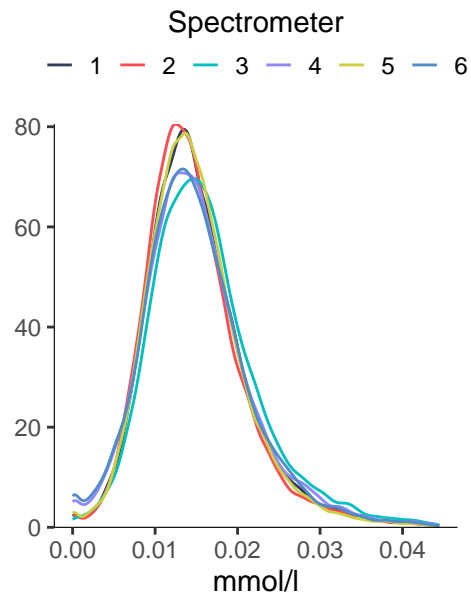


Ketone bodies

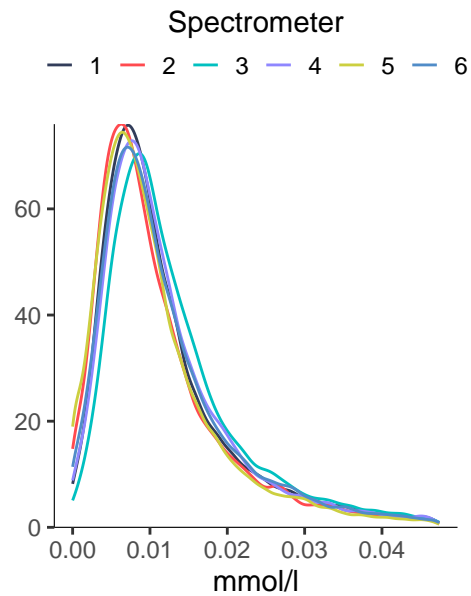
bOHbutyrate



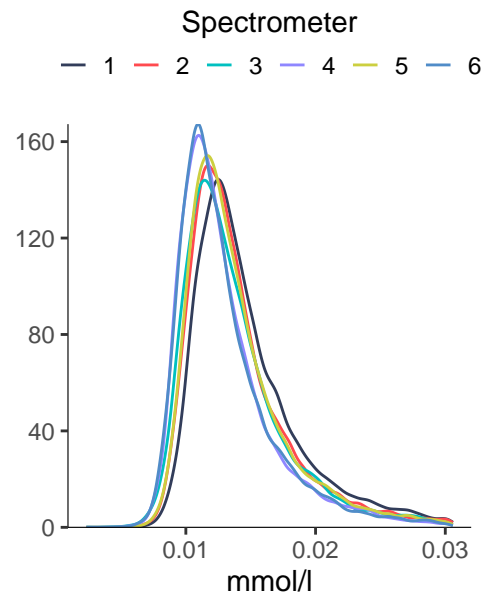
Acetate



Acetoacetate

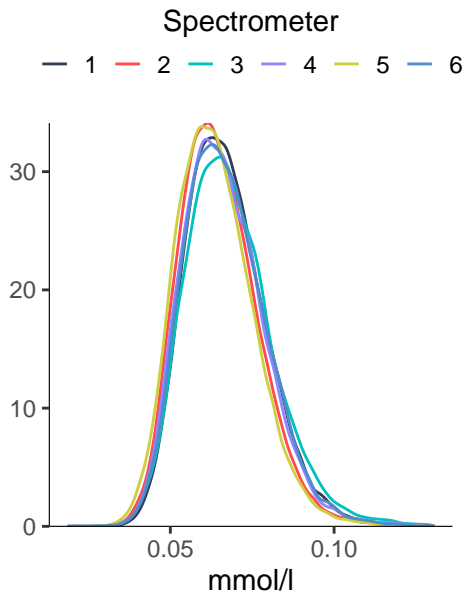


Acetone

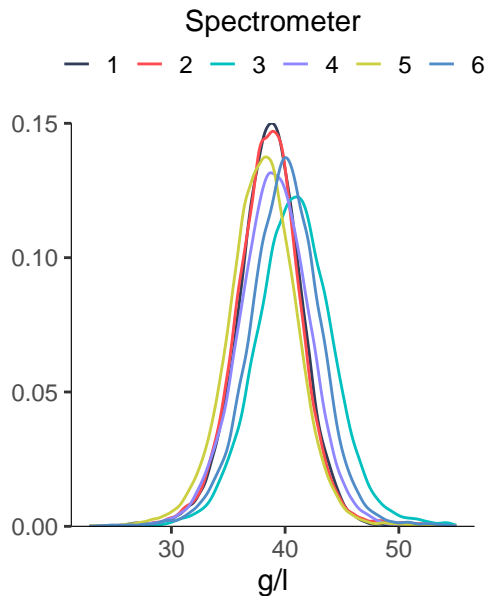


Fluid balance

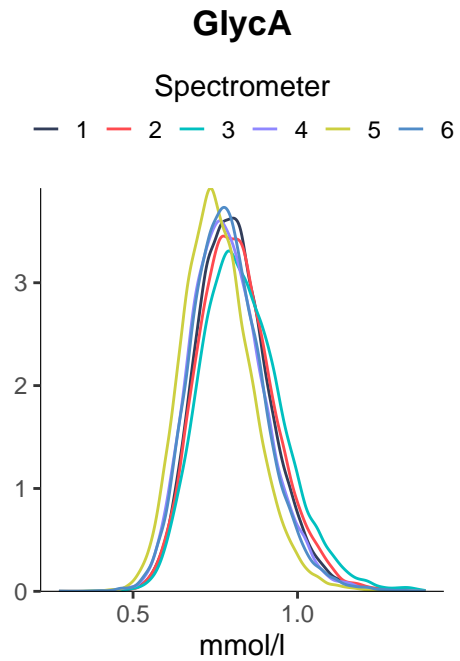
Creatinine



Albumin



Inflammation

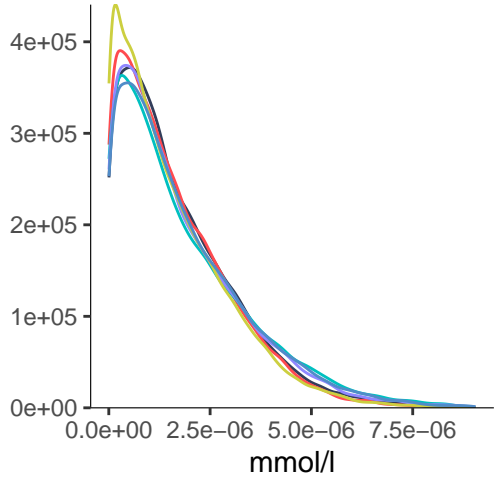


Chylomicrons and extremely large VLDL (particle diameters from 75 nm upwards)

XXL_VLDL_P

Spectrometer

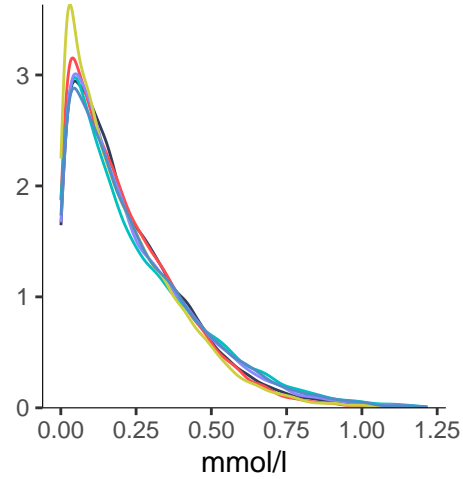
— 1 — 2 — 3 — 4 — 5 — 6



XXL_VLDL_L

Spectrometer

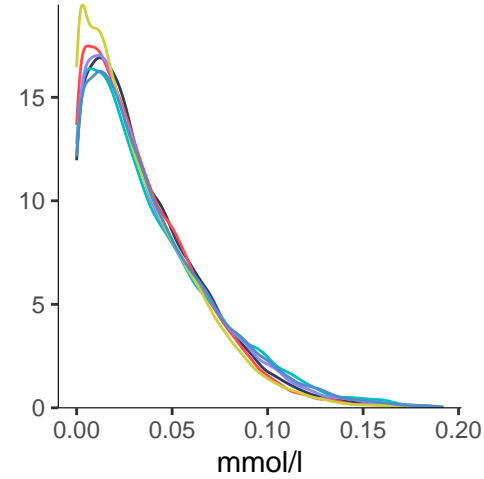
— 1 — 2 — 3 — 4 — 5 — 6



XXL_VLDL_PL

Spectrometer

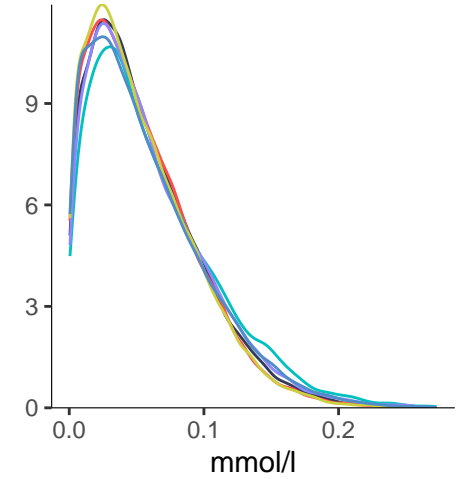
— 1 — 2 — 3 — 4 — 5 — 6



XXL_VLDL_C

Spectrometer

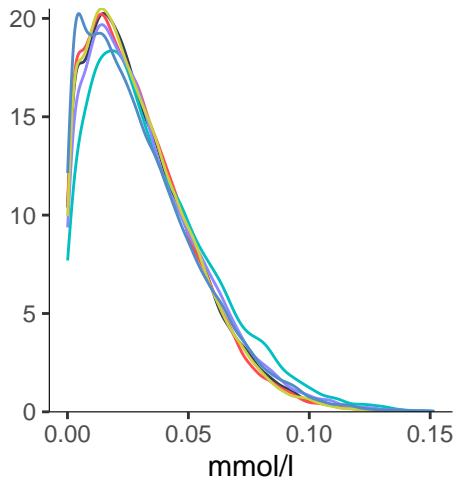
— 1 — 2 — 3 — 4 — 5 — 6



XXL_VLDL_CE

Spectrometer

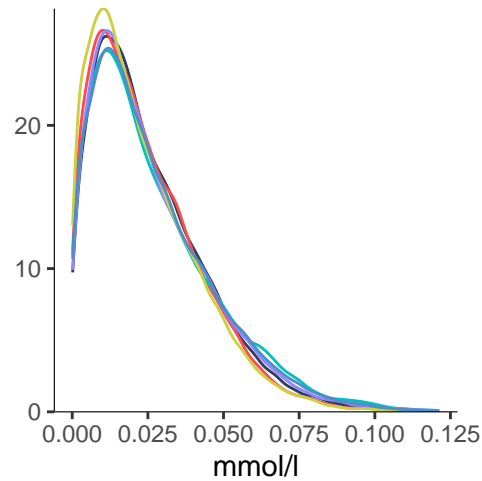
— 1 — 2 — 3 — 4 — 5 — 6



XXL_VLDL_FC

Spectrometer

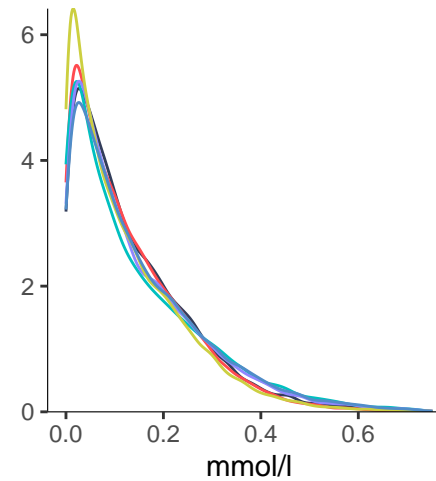
— 1 — 2 — 3 — 4 — 5 — 6



XXL_VLDL_TG

Spectrometer

— 1 — 2 — 3 — 4 — 5 — 6

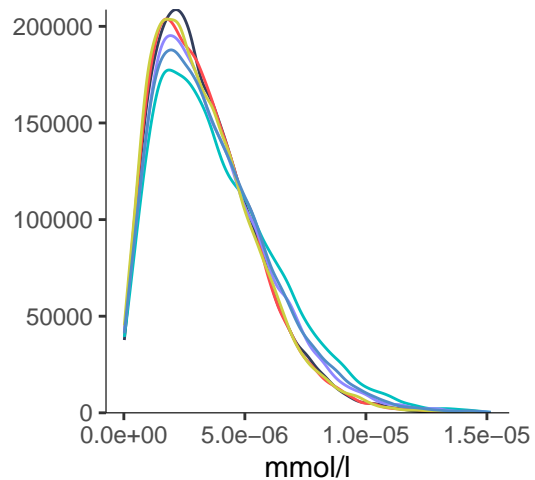


Very large VLDL (average diameter 64 nm)

XL_VLDL_P

Spectrometer

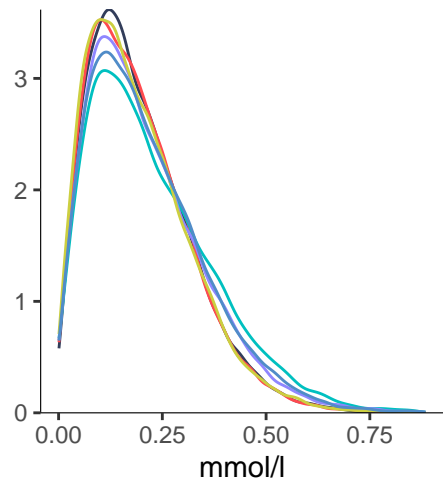
— 1 — 2 — 3 — 4 — 5 — 6



XL_VLDL_L

Spectrometer

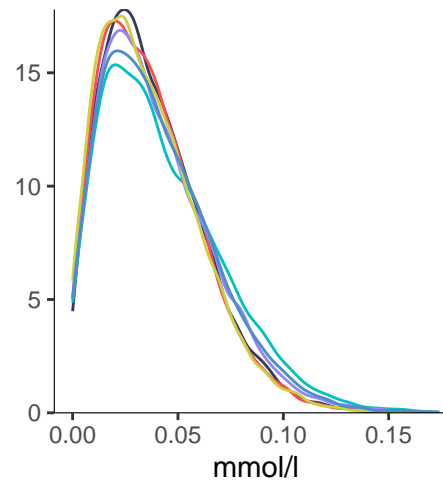
— 1 — 2 — 3 — 4 — 5 — 6



XL_VLDL_PL

Spectrometer

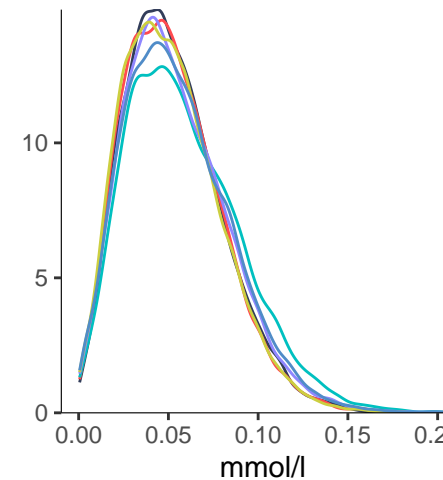
— 1 — 2 — 3 — 4 — 5 — 6



XL_VLDL_C

Spectrometer

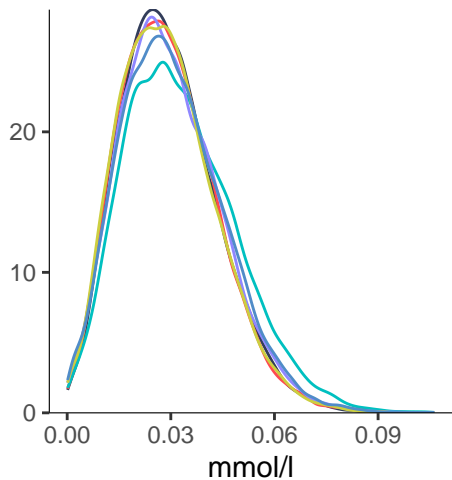
— 1 — 2 — 3 — 4 — 5 — 6



XL_VLDL_CE

Spectrometer

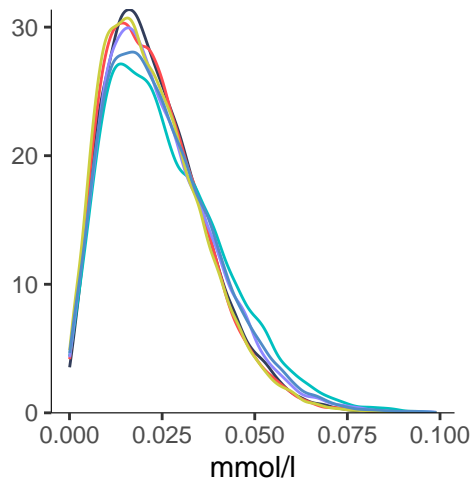
— 1 — 2 — 3 — 4 — 5 — 6



XL_VLDL_FC

Spectrometer

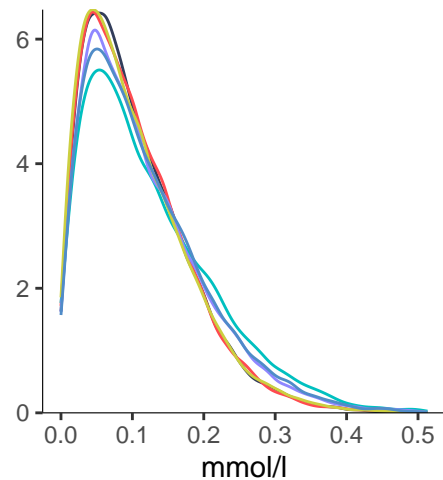
— 1 — 2 — 3 — 4 — 5 — 6



XL_VLDL_TG

Spectrometer

— 1 — 2 — 3 — 4 — 5 — 6

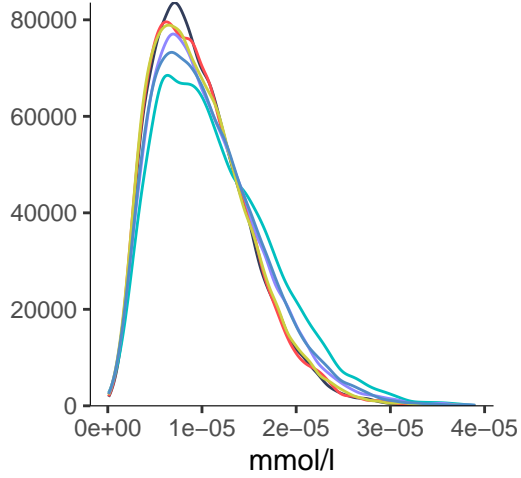


Large VLDL (average diameter 53.6 nm)

L_VLDL_P

Spectrometer

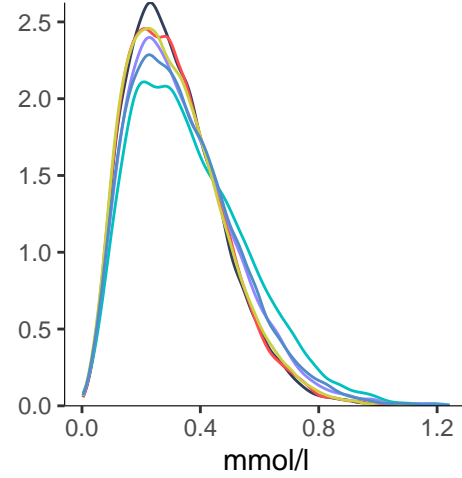
— 1 — 2 — 3 — 4 — 5 — 6



L_VLDL_L

Spectrometer

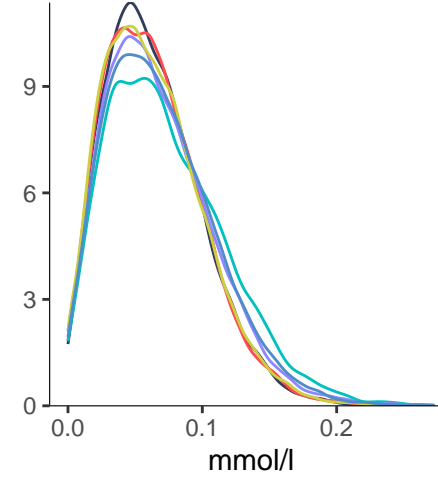
— 1 — 2 — 3 — 4 — 5 — 6



L_VLDL_PL

Spectrometer

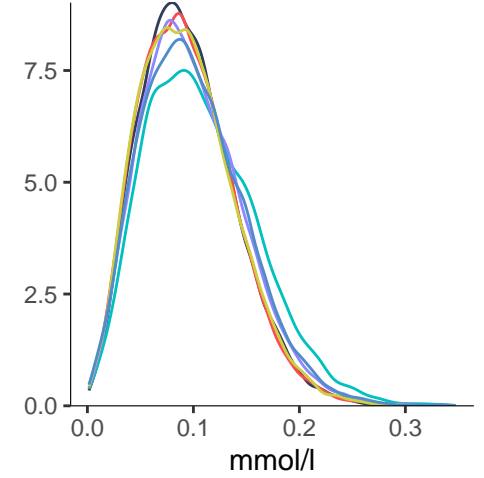
— 1 — 2 — 3 — 4 — 5 — 6



L_VLDL_C

Spectrometer

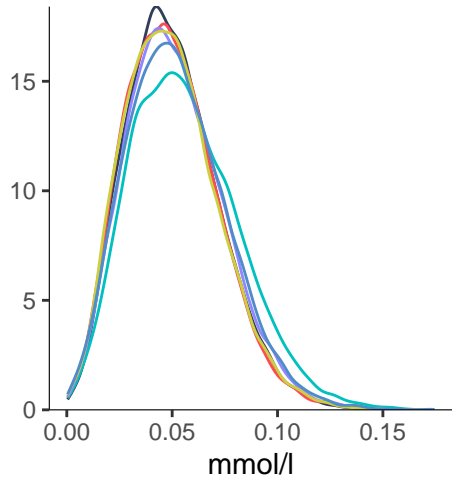
— 1 — 2 — 3 — 4 — 5 — 6



L_VLDL_CE

Spectrometer

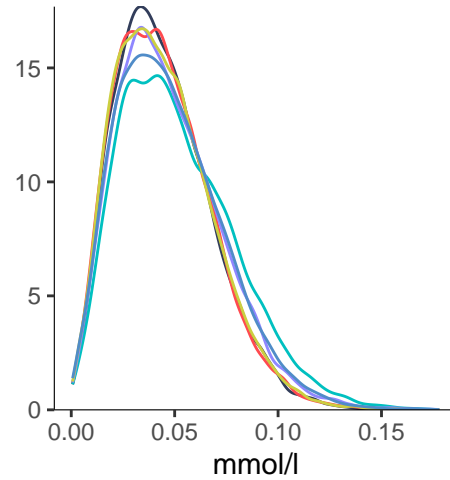
— 1 — 2 — 3 — 4 — 5 — 6



L_VLDL_FC

Spectrometer

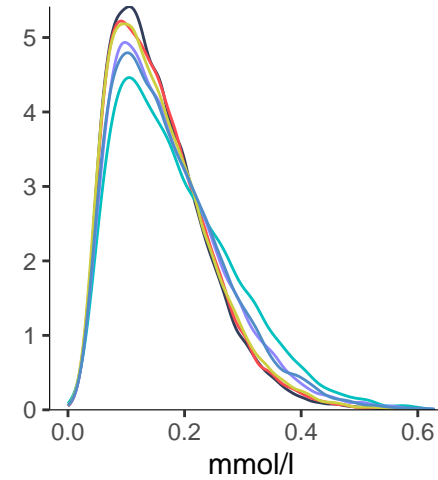
— 1 — 2 — 3 — 4 — 5 — 6



L_VLDL_TG

Spectrometer

— 1 — 2 — 3 — 4 — 5 — 6

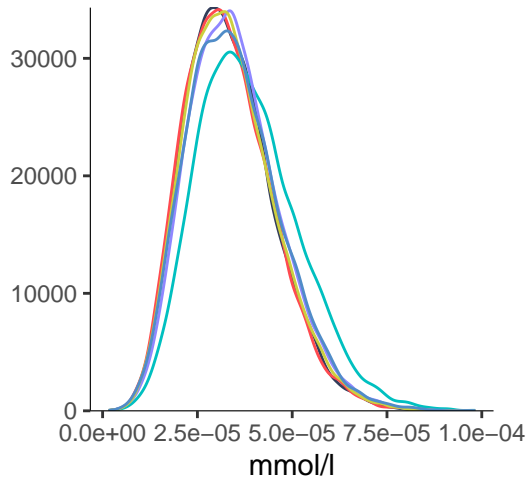


Medium VLDL (average diameter 44.5 nm)

M_VLDL_P

Spectrometer

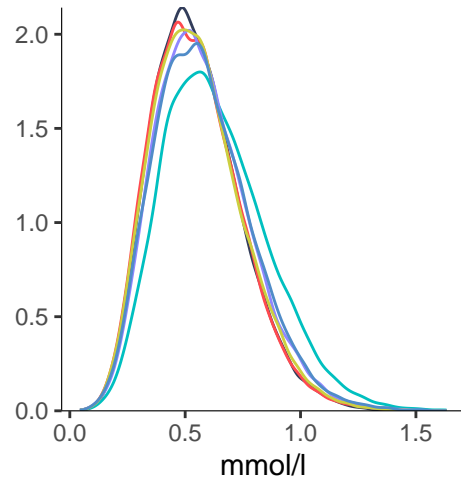
— 1 — 2 — 3 — 4 — 5 — 6



M_VLDL_L

Spectrometer

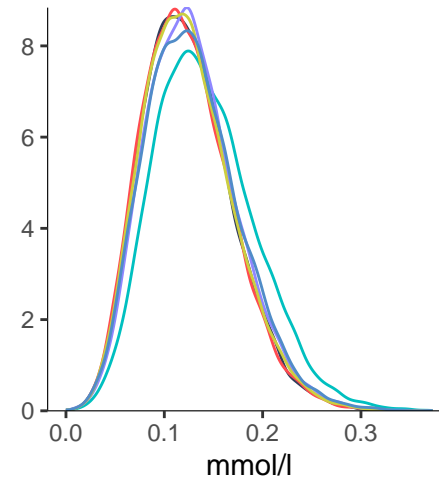
— 1 — 2 — 3 — 4 — 5 — 6



M_VLDL_PL

Spectrometer

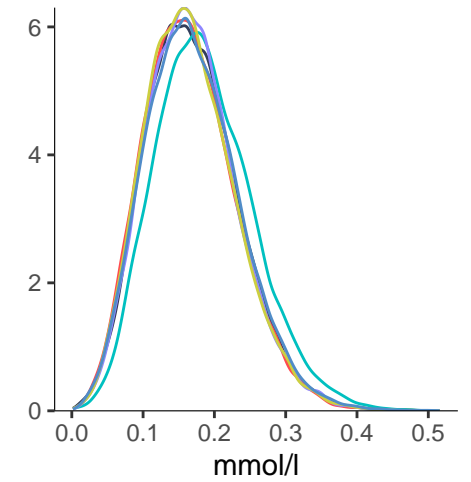
— 1 — 2 — 3 — 4 — 5 — 6



M_VLDL_C

Spectrometer

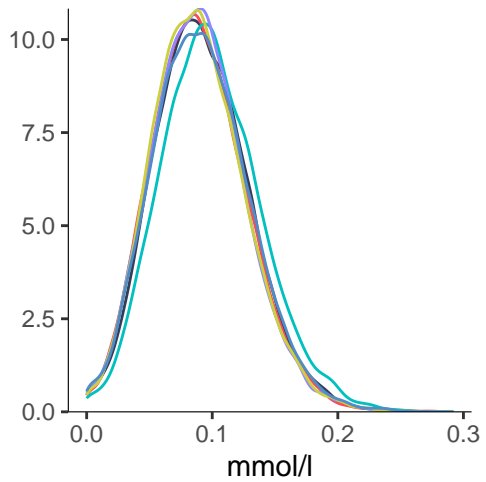
— 1 — 2 — 3 — 4 — 5 — 6



M_VLDL_CE

Spectrometer

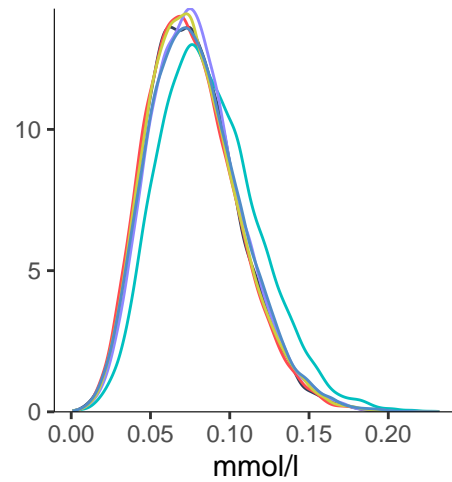
— 1 — 2 — 3 — 4 — 5 — 6



M_VLDL_FC

Spectrometer

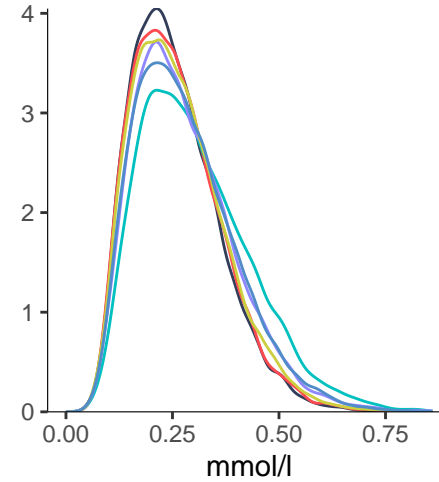
— 1 — 2 — 3 — 4 — 5 — 6



M_VLDL_TG

Spectrometer

— 1 — 2 — 3 — 4 — 5 — 6

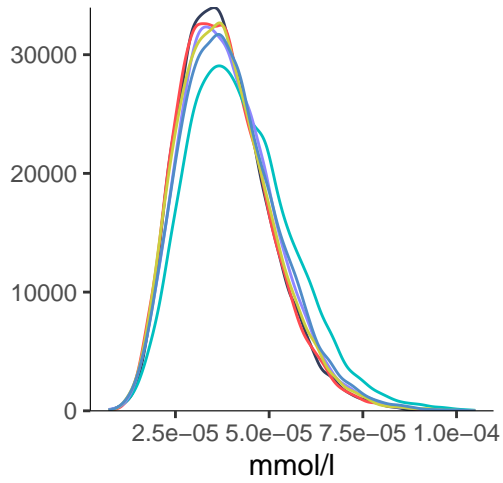


Small VLDL (average diameter 36.8 nm)

S_VLDL_P

Spectrometer

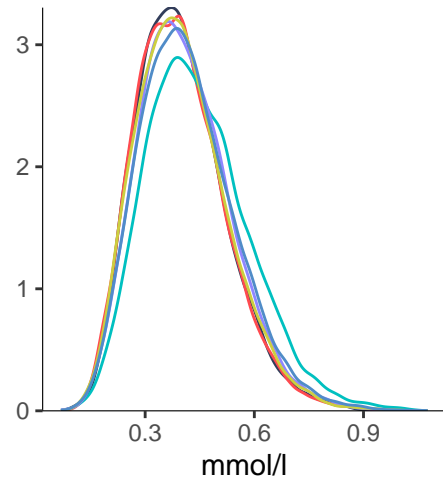
— 1 — 2 — 3 — 4 — 5 — 6



S_VLDL_L

Spectrometer

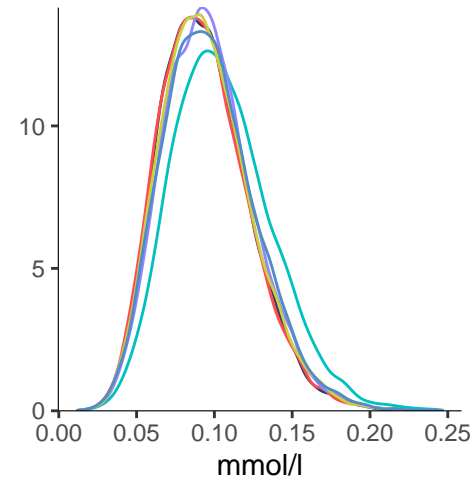
— 1 — 2 — 3 — 4 — 5 — 6



S_VLDL_PL

Spectrometer

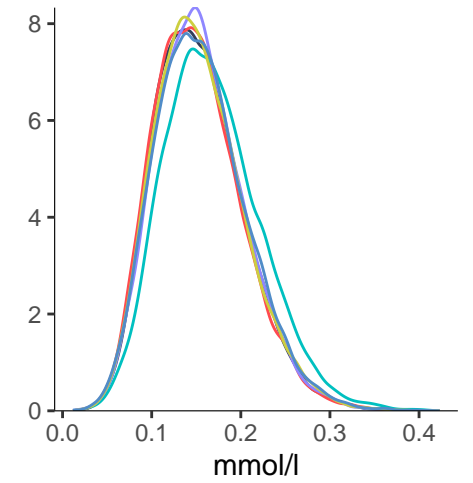
— 1 — 2 — 3 — 4 — 5 — 6



S_VLDL_C

Spectrometer

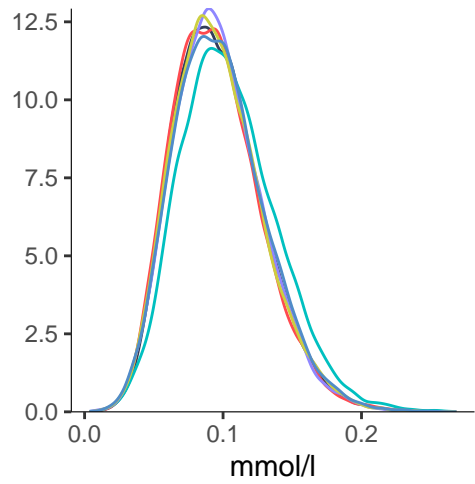
— 1 — 2 — 3 — 4 — 5 — 6



S_VLDL_CE

Spectrometer

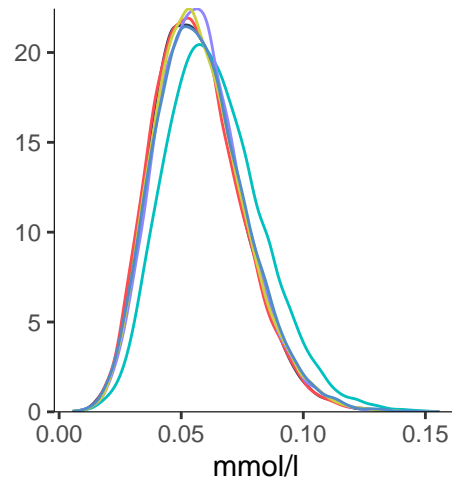
— 1 — 2 — 3 — 4 — 5 — 6



S_VLDL_FC

Spectrometer

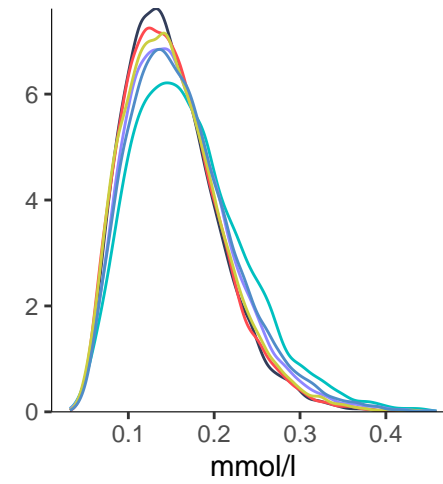
— 1 — 2 — 3 — 4 — 5 — 6



S_VLDL_TG

Spectrometer

— 1 — 2 — 3 — 4 — 5 — 6

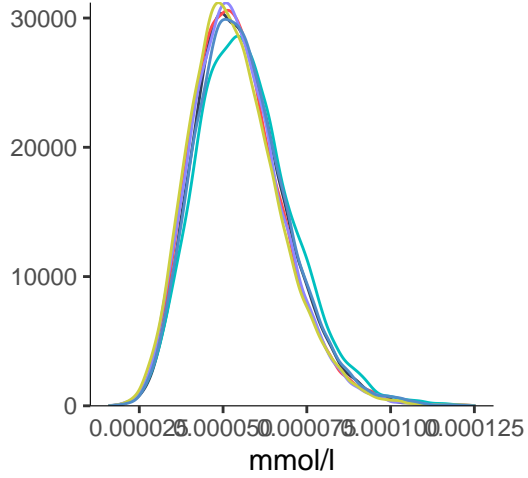


Very small VLDL (average diameter 31.3 nm)

XS_VLDL_P

Spectrometer

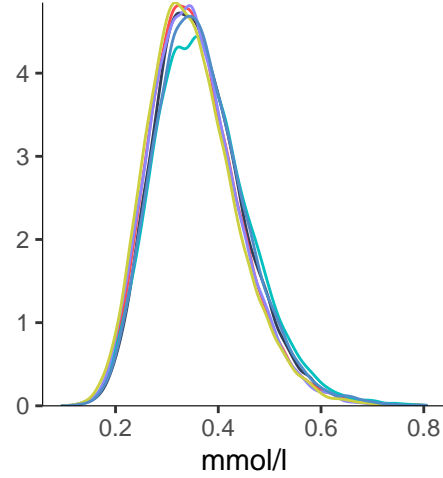
— 1 — 2 — 3 — 4 — 5 — 6



XS_VLDL_L

Spectrometer

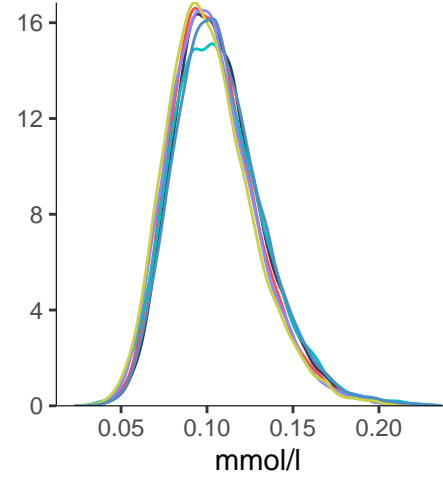
— 1 — 2 — 3 — 4 — 5 — 6



XS_VLDL_PL

Spectrometer

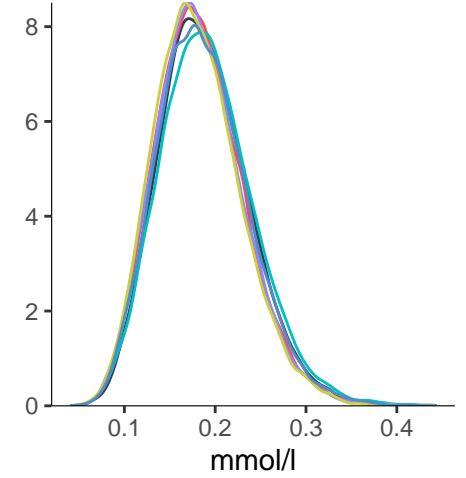
— 1 — 2 — 3 — 4 — 5 — 6



XS_VLDL_C

Spectrometer

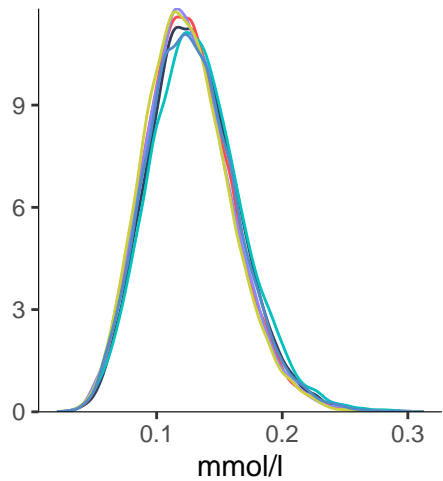
— 1 — 2 — 3 — 4 — 5 — 6



XS_VLDL_CE

Spectrometer

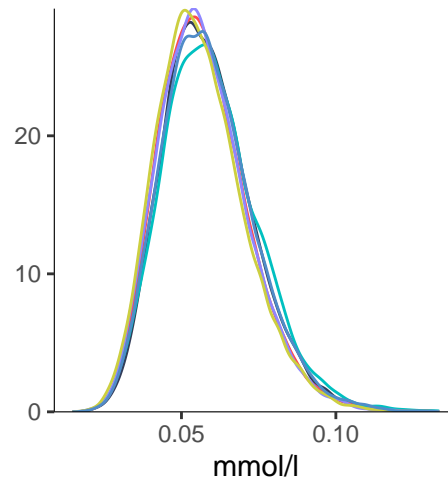
— 1 — 2 — 3 — 4 — 5 — 6



XS_VLDL_FC

Spectrometer

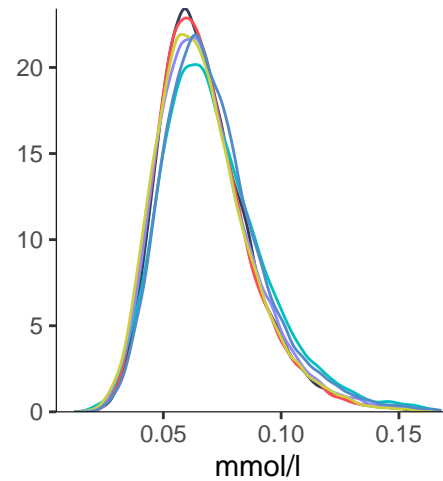
— 1 — 2 — 3 — 4 — 5 — 6



XS_VLDL_TG

Spectrometer

— 1 — 2 — 3 — 4 — 5 — 6

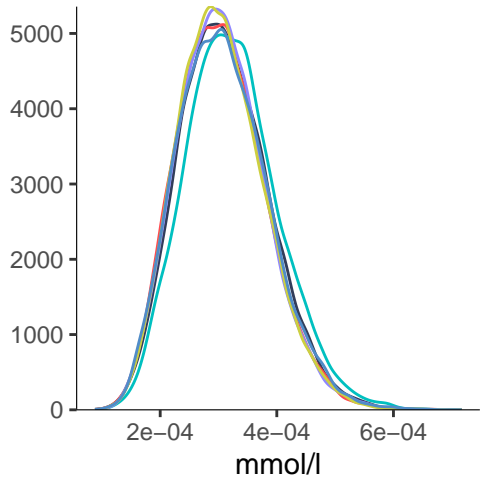


IDL (average diameter 28.6 nm)

IDL_P

Spectrometer

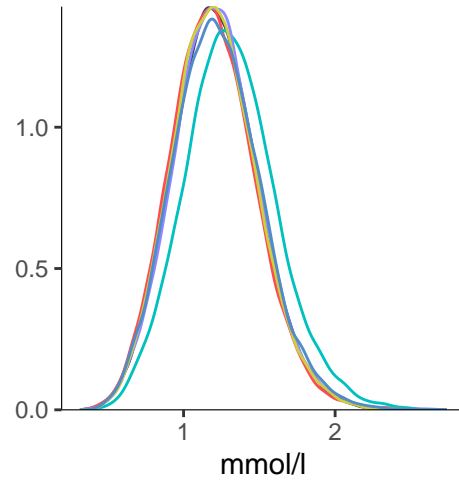
— 1 — 2 — 3 — 4 — 5 — 6



IDL_L

Spectrometer

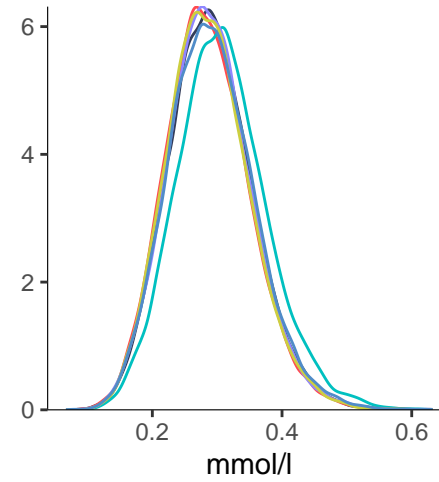
— 1 — 2 — 3 — 4 — 5 — 6



IDL_PL

Spectrometer

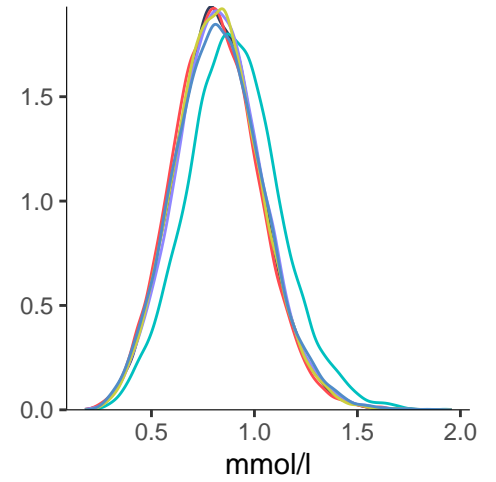
— 1 — 2 — 3 — 4 — 5 — 6



IDL_C

Spectrometer

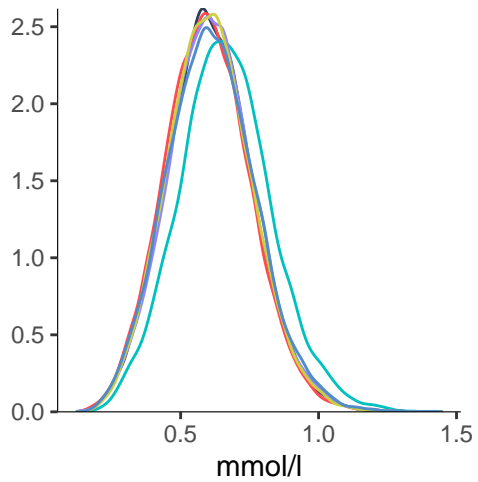
— 1 — 2 — 3 — 4 — 5 — 6



IDL_CE

Spectrometer

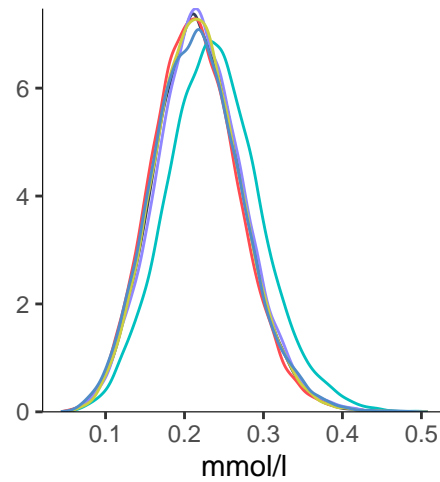
— 1 — 2 — 3 — 4 — 5 — 6



IDL_FC

Spectrometer

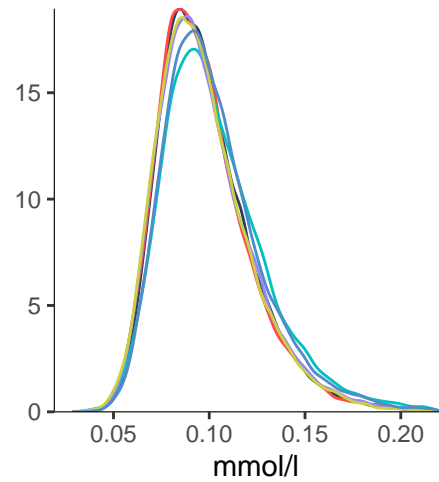
— 1 — 2 — 3 — 4 — 5 — 6



IDL_TG

Spectrometer

— 1 — 2 — 3 — 4 — 5 — 6

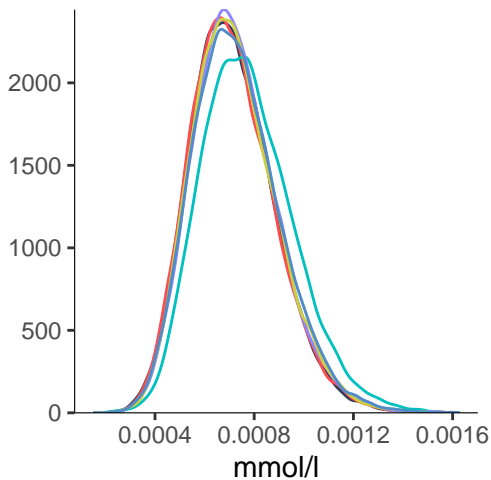


Large LDL (average diameter 25.5 nm)

L_LDL_P

Spectrometer

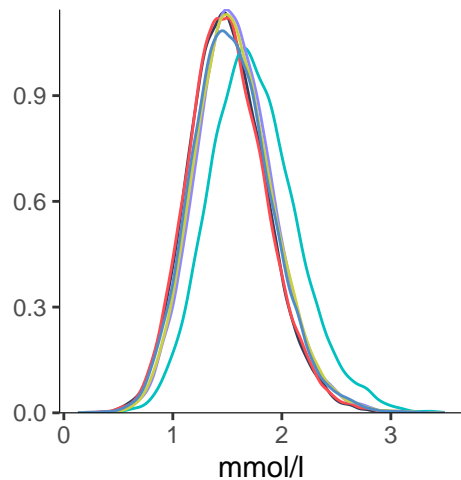
— 1 — 2 — 3 — 4 — 5 — 6



L_LDL_L

Spectrometer

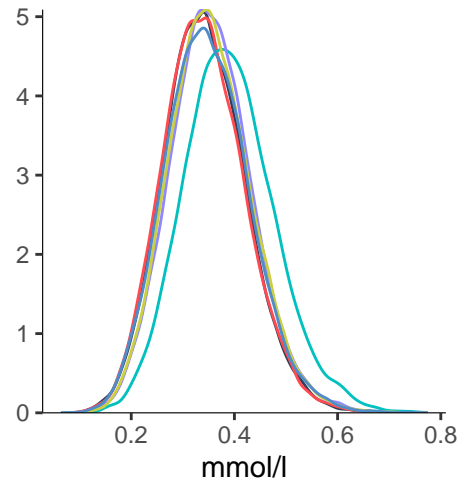
— 1 — 2 — 3 — 4 — 5 — 6



L_LDL_PL

Spectrometer

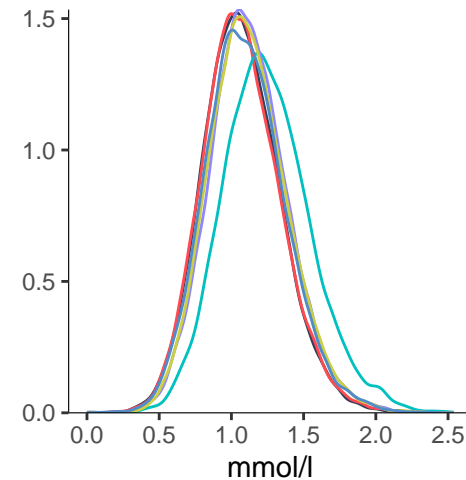
— 1 — 2 — 3 — 4 — 5 — 6



L_LDL_C

Spectrometer

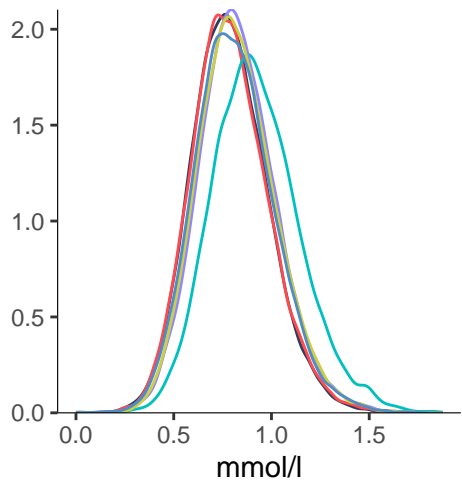
— 1 — 2 — 3 — 4 — 5 — 6



L_LDL_CE

Spectrometer

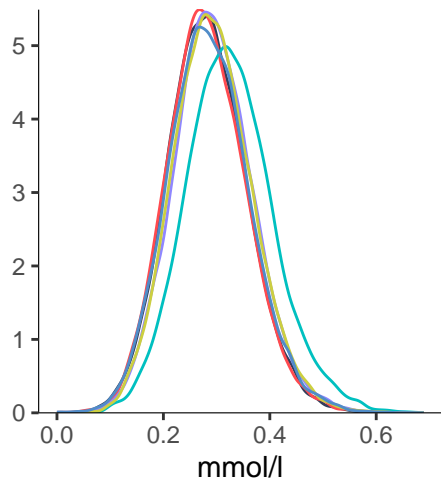
— 1 — 2 — 3 — 4 — 5 — 6



L_LDL_FC

Spectrometer

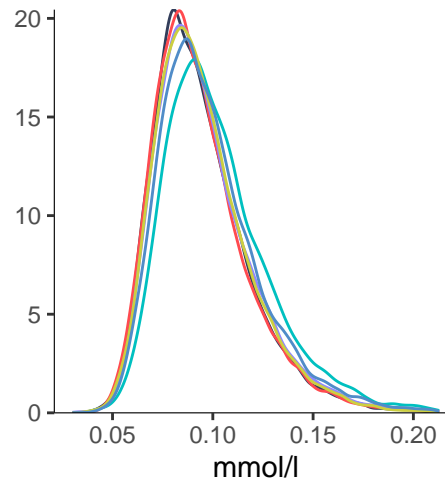
— 1 — 2 — 3 — 4 — 5 — 6



L_LDL_TG

Spectrometer

— 1 — 2 — 3 — 4 — 5 — 6

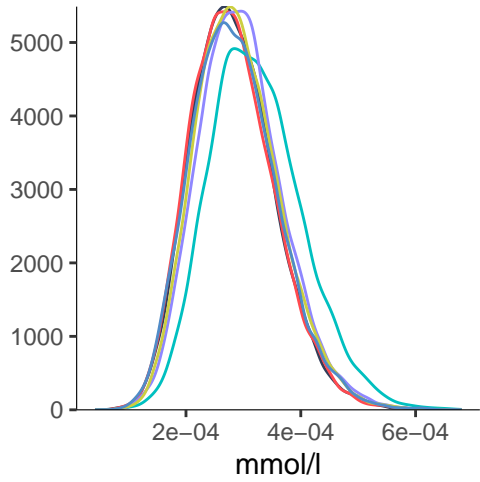


Medium LDL (average diameter 23 nm)

M_LDL_P

Spectrometer

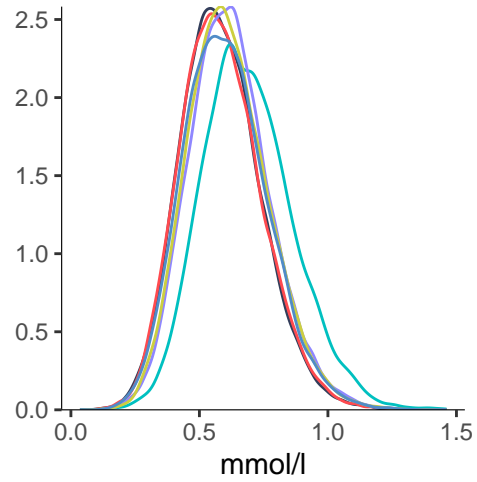
— 1 — 2 — 3 — 4 — 5 — 6



M_LDL_L

Spectrometer

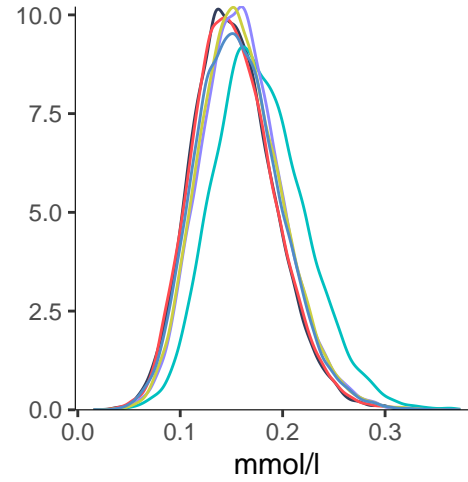
— 1 — 2 — 3 — 4 — 5 — 6



M_LDL_PL

Spectrometer

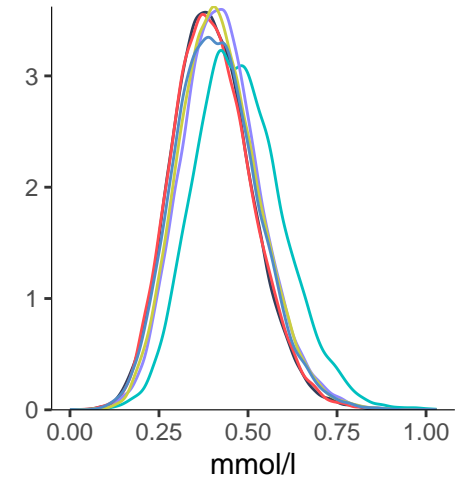
— 1 — 2 — 3 — 4 — 5 — 6



M_LDL_C

Spectrometer

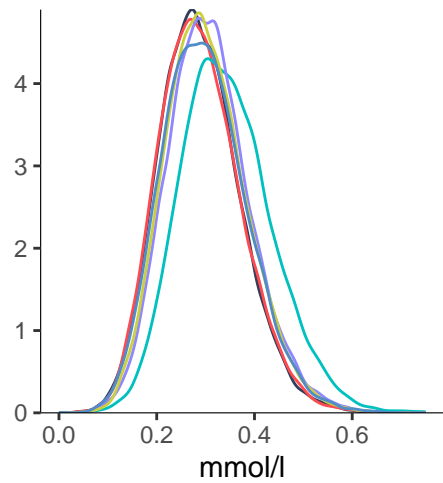
— 1 — 2 — 3 — 4 — 5 — 6



M_LDL_CE

Spectrometer

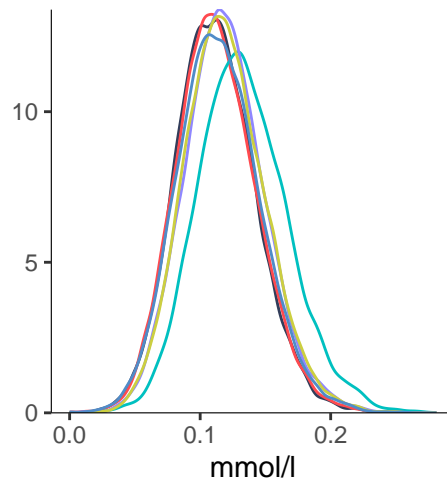
— 1 — 2 — 3 — 4 — 5 — 6



M_LDL_FC

Spectrometer

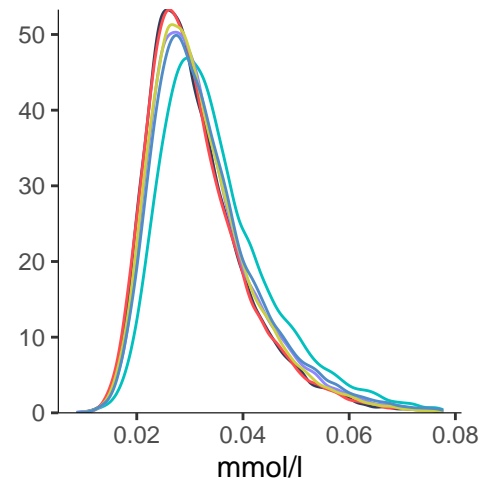
— 1 — 2 — 3 — 4 — 5 — 6



M_LDL_TG

Spectrometer

— 1 — 2 — 3 — 4 — 5 — 6

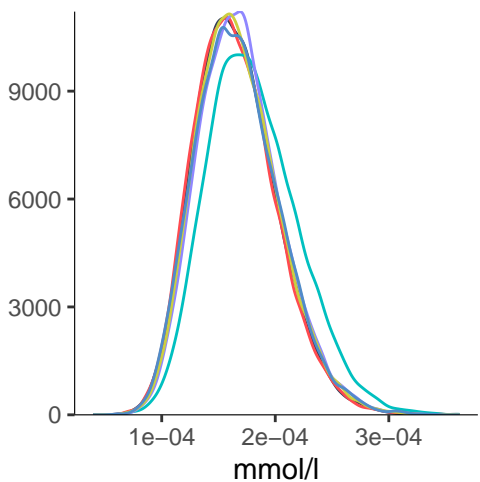


Small LDL (average diameter 18.7 nm)

S_LDL_P

Spectrometer

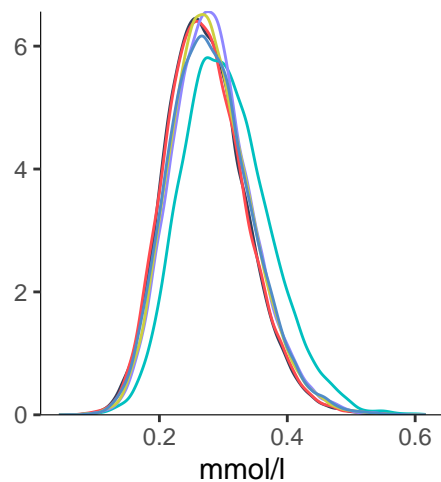
— 1 — 2 — 3 — 4 — 5 — 6



S_LDL_L

Spectrometer

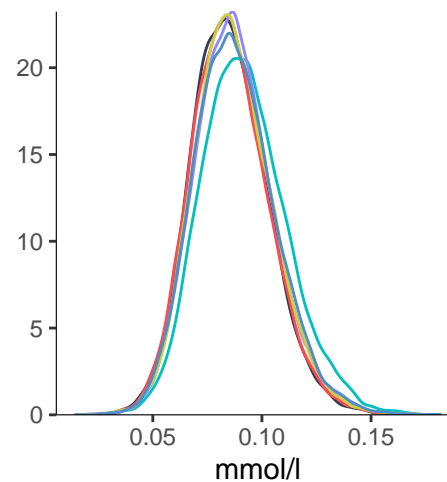
— 1 — 2 — 3 — 4 — 5 — 6



S_LDL_PL

Spectrometer

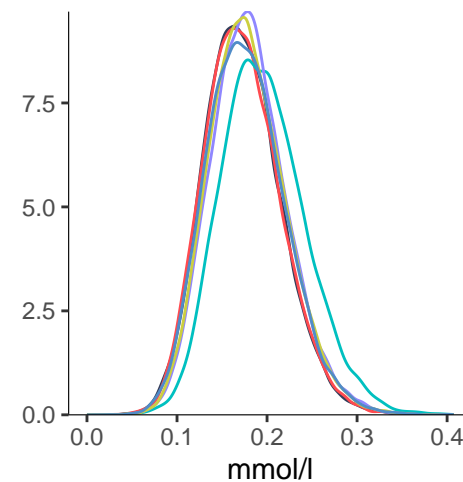
— 1 — 2 — 3 — 4 — 5 — 6



S_LDL_C

Spectrometer

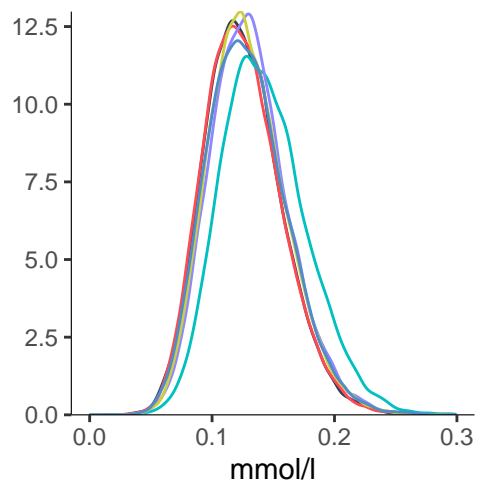
— 1 — 2 — 3 — 4 — 5 — 6



S_LDL_CE

Spectrometer

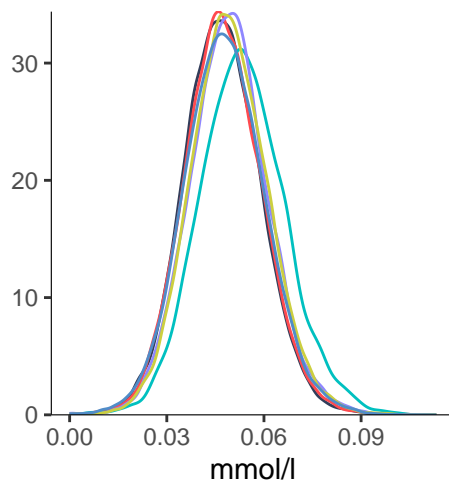
— 1 — 2 — 3 — 4 — 5 — 6



S_LDL_FC

Spectrometer

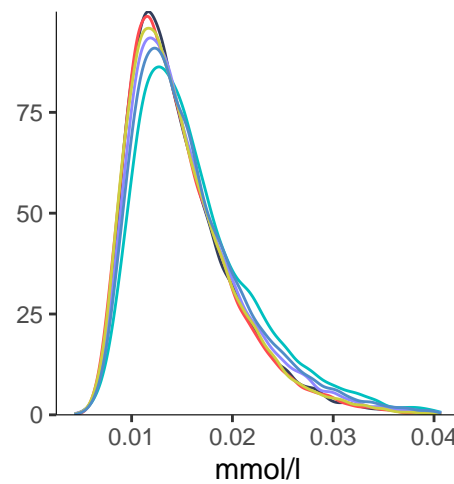
— 1 — 2 — 3 — 4 — 5 — 6



S_LDL_TG

Spectrometer

— 1 — 2 — 3 — 4 — 5 — 6

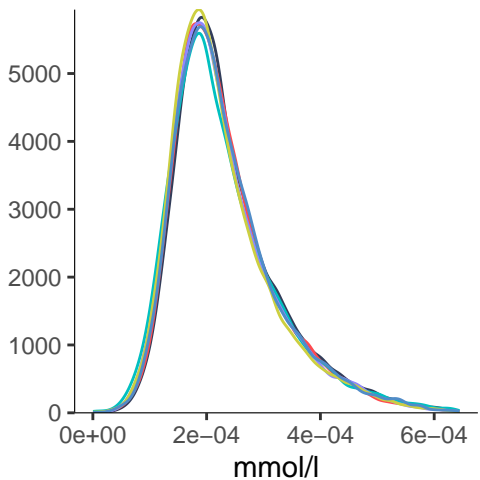


Very large HDL (average diameter 14.3 nm)

XL_HDL_P

Spectrometer

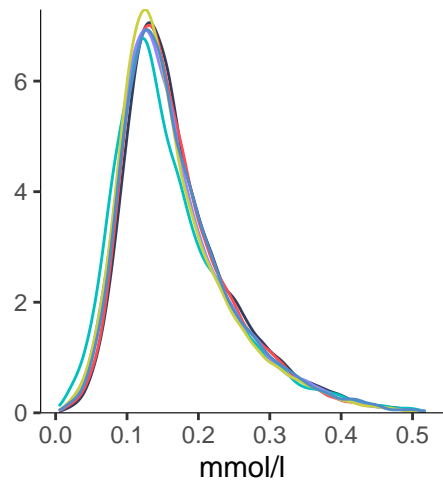
— 1 — 2 — 3 — 4 — 5 — 6



XL_HDL_L

Spectrometer

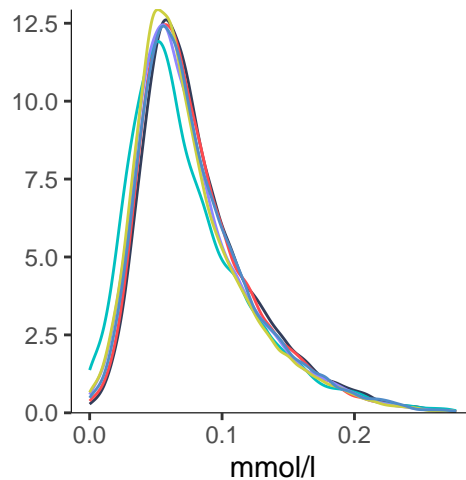
— 1 — 2 — 3 — 4 — 5 — 6



XL_HDL_PL

Spectrometer

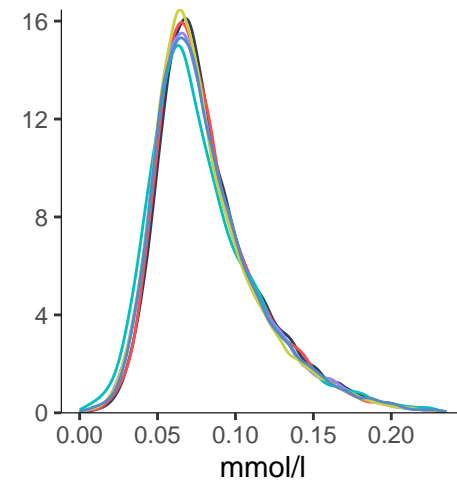
— 1 — 2 — 3 — 4 — 5 — 6



XL_HDL_C

Spectrometer

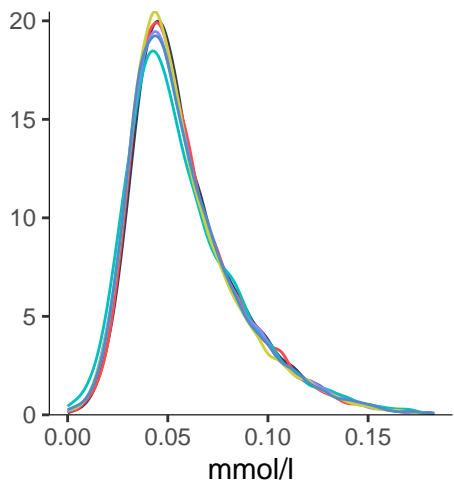
— 1 — 2 — 3 — 4 — 5 — 6



XL_HDL_CE

Spectrometer

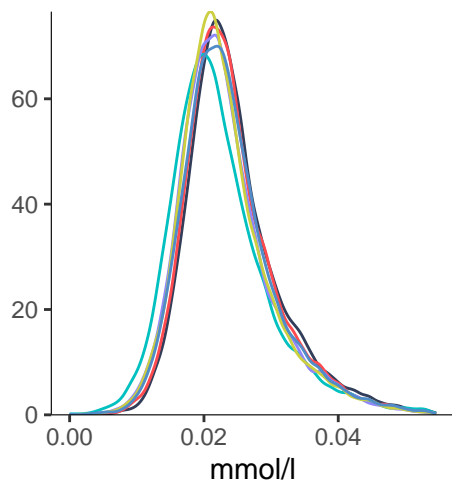
— 1 — 2 — 3 — 4 — 5 — 6



XL_HDL_FC

Spectrometer

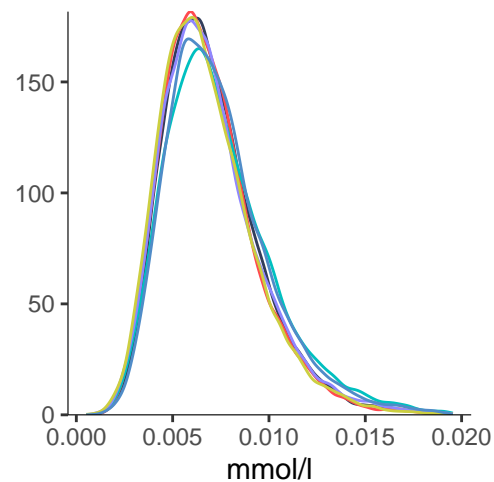
— 1 — 2 — 3 — 4 — 5 — 6



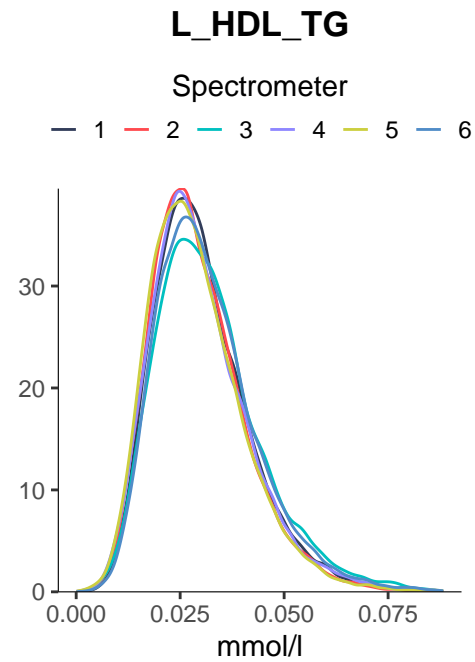
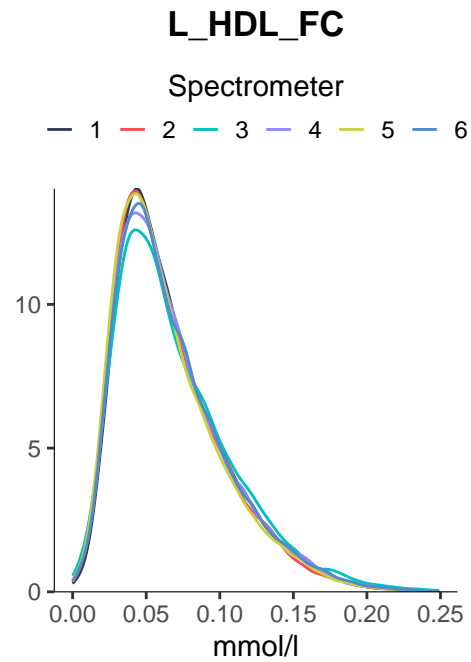
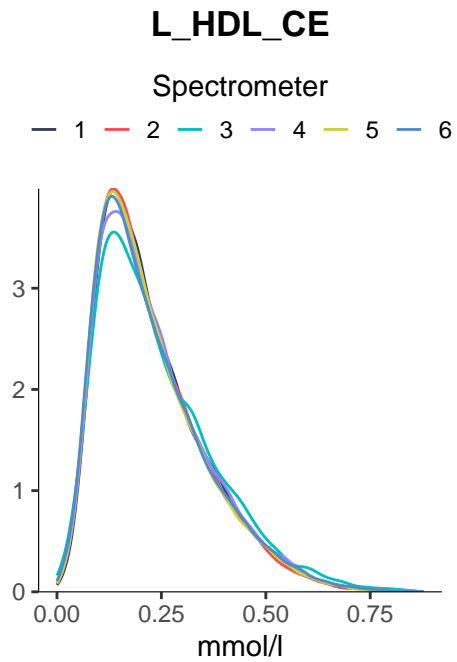
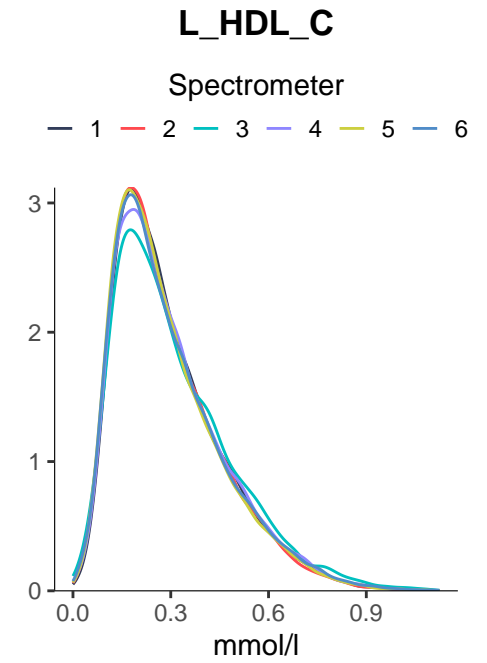
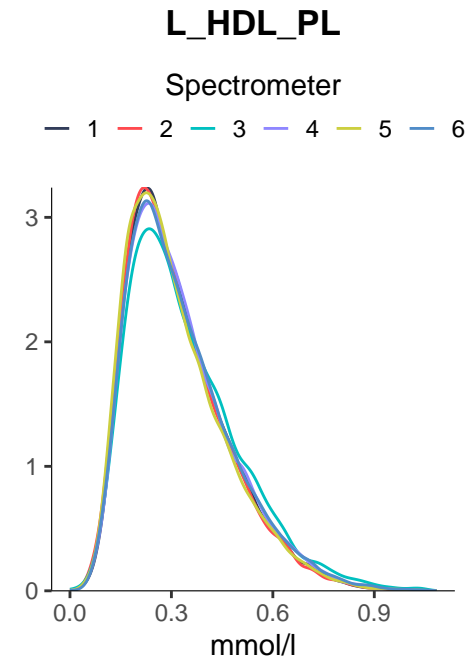
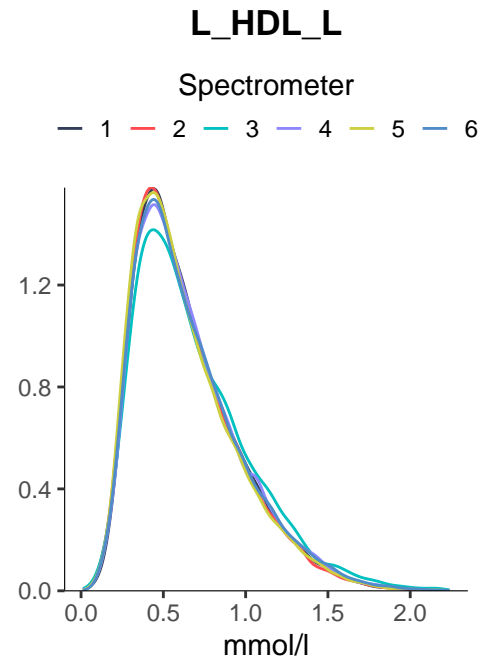
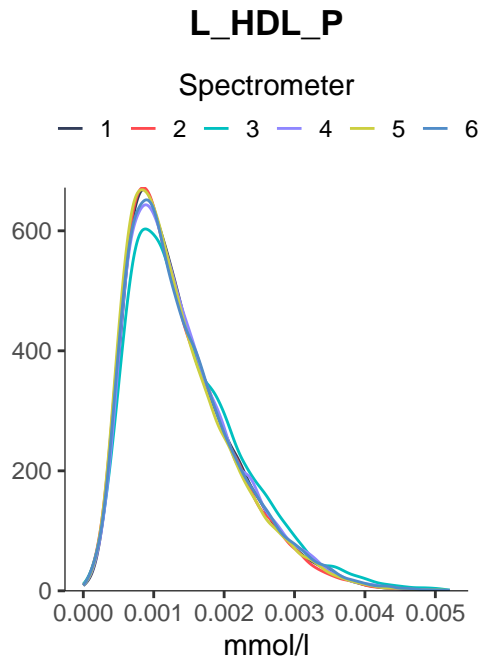
XL_HDL_TG

Spectrometer

— 1 — 2 — 3 — 4 — 5 — 6



Large HDL (average diameter 12.1 nm)

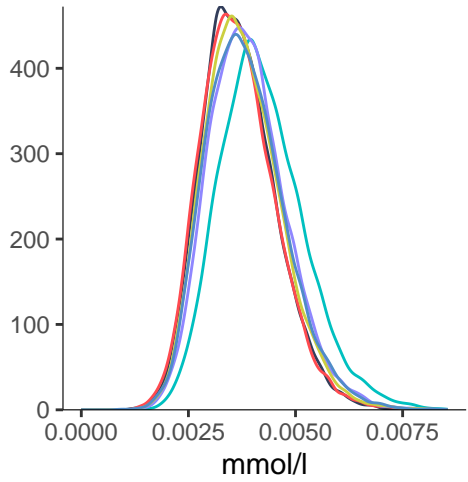


Medium HDL (average diameter 10.9 nm)

M_HDL_P

Spectrometer

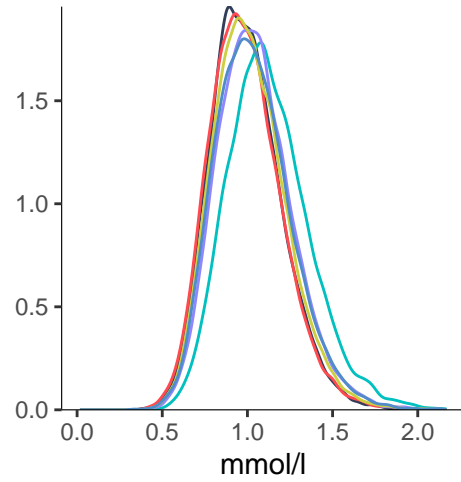
— 1 — 2 — 3 — 4 — 5 — 6



M_HDL_L

Spectrometer

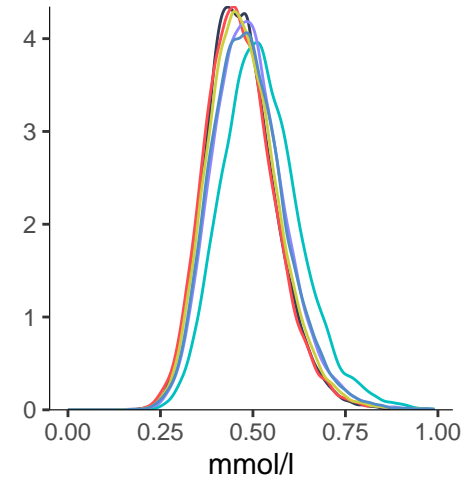
— 1 — 2 — 3 — 4 — 5 — 6



M_HDL_PL

Spectrometer

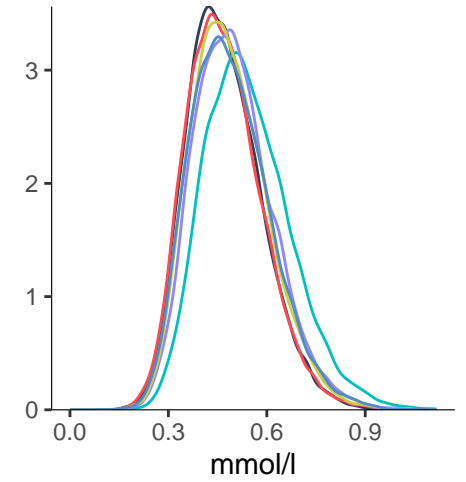
— 1 — 2 — 3 — 4 — 5 — 6



M_HDL_C

Spectrometer

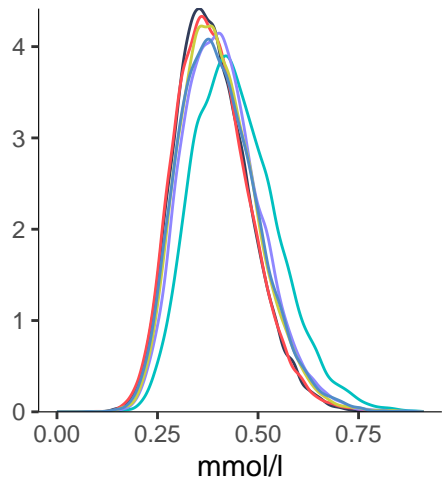
— 1 — 2 — 3 — 4 — 5 — 6



M_HDL_CE

Spectrometer

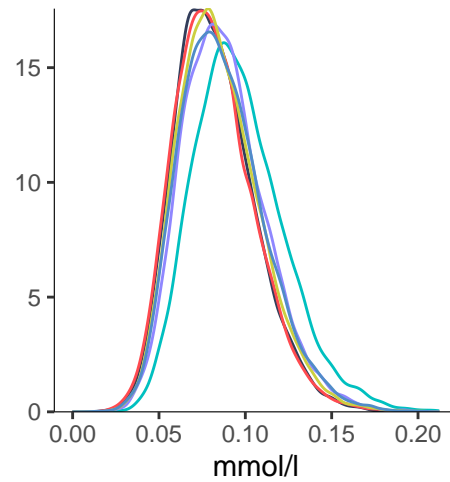
— 1 — 2 — 3 — 4 — 5 — 6



M_HDL_FC

Spectrometer

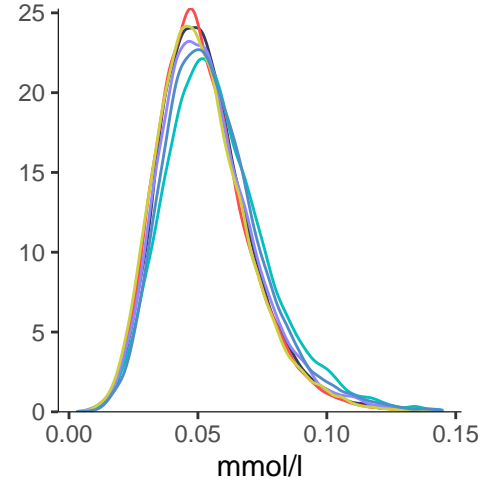
— 1 — 2 — 3 — 4 — 5 — 6



M_HDL_TG

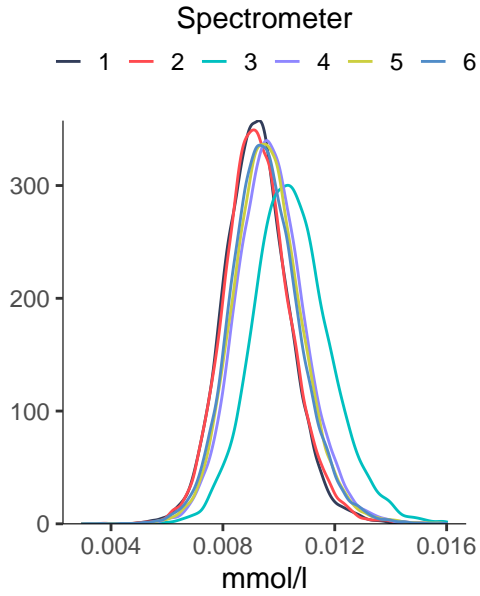
Spectrometer

— 1 — 2 — 3 — 4 — 5 — 6

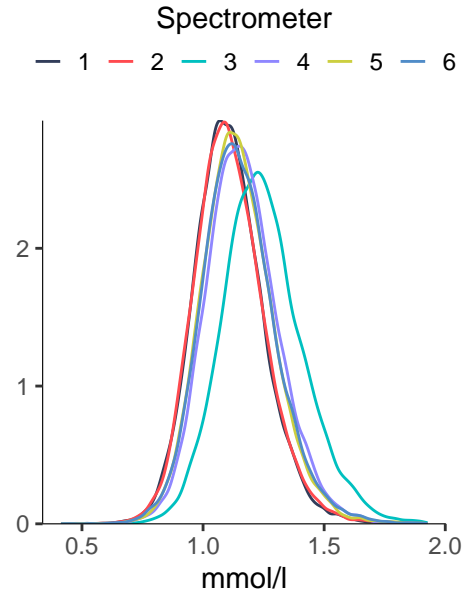


Small HDL (average diameter 8.7 nm)

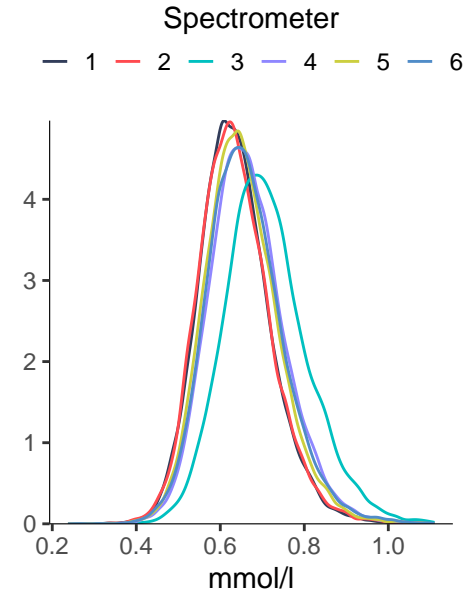
S_HDL_P



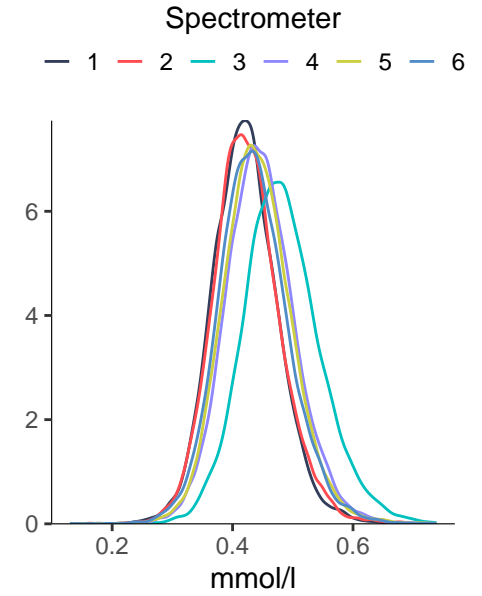
S_HDL_L



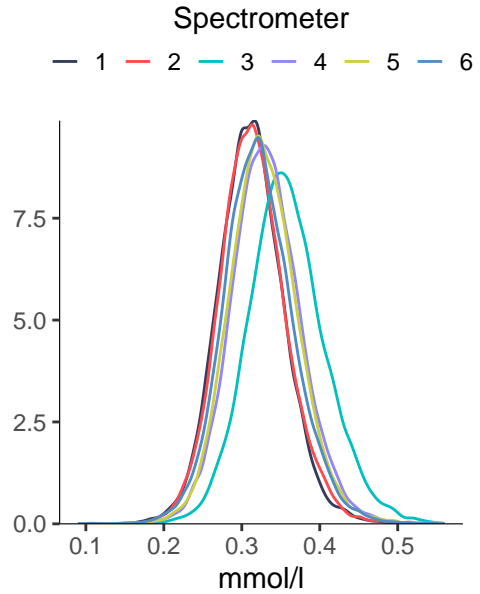
S_HDL_PL



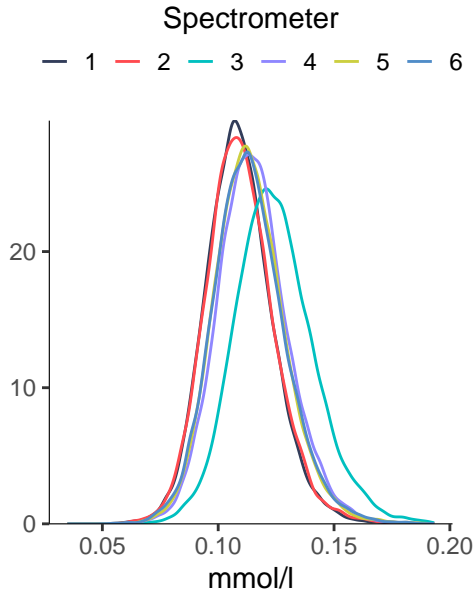
S_HDL_C



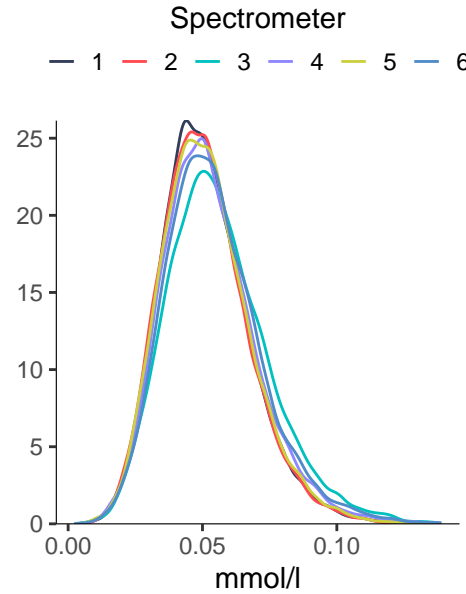
S_HDL_CE



S_HDL_FC

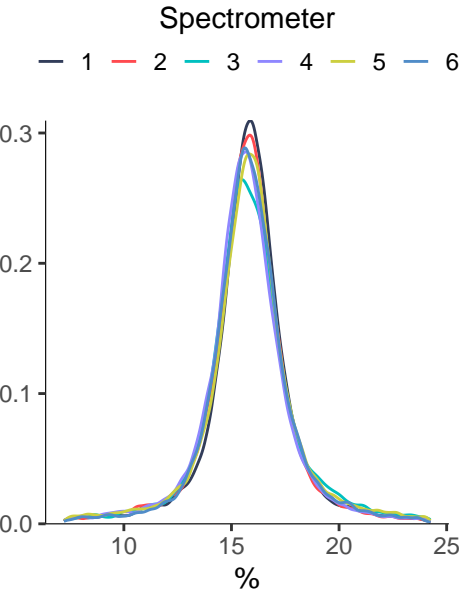


S_HDL_TG

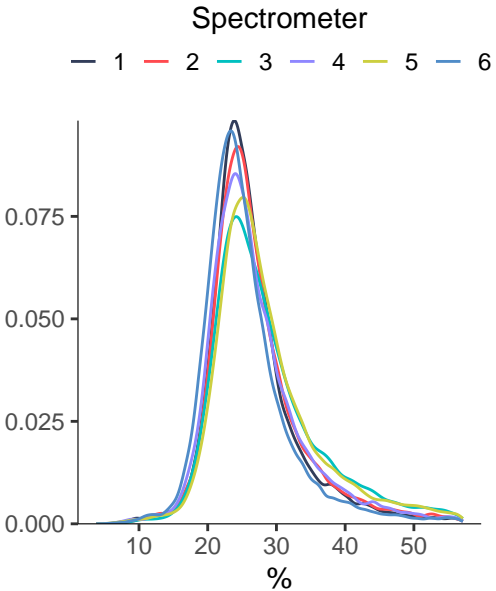


Chylomicrons and extremely large VLDL ratios

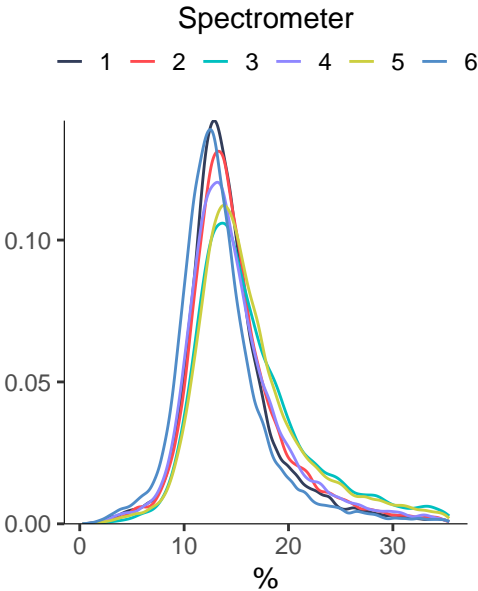
XXL_VLDL_PL_pct



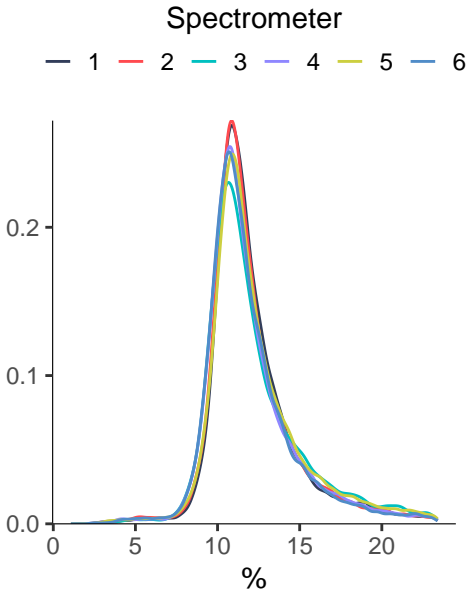
XXL_VLDL_C_pct



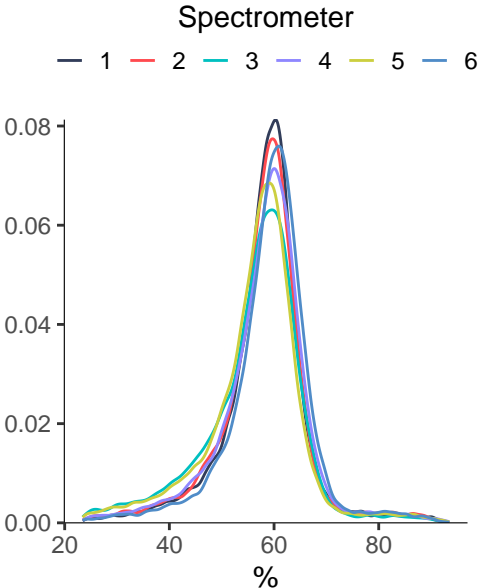
XXL_VLDL_CE_pct



XXL_VLDL_FC_pct

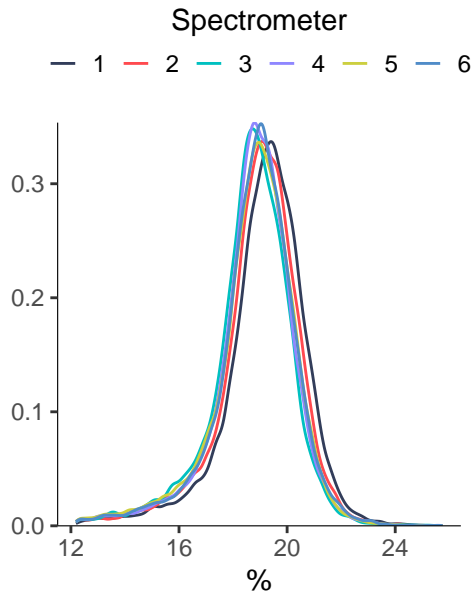


XXL_VLDL_TG_pct

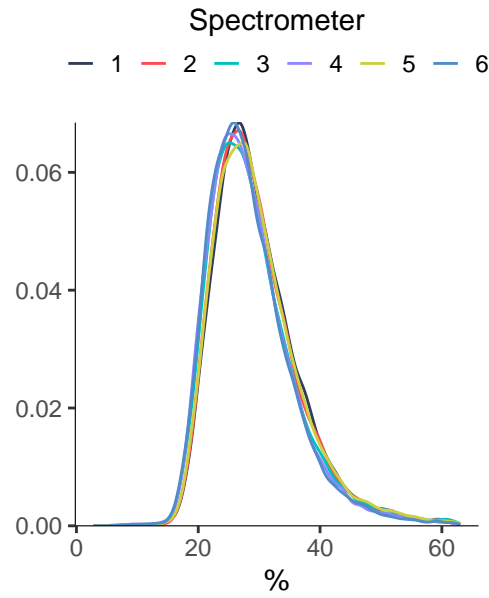


Very large VLDL ratios

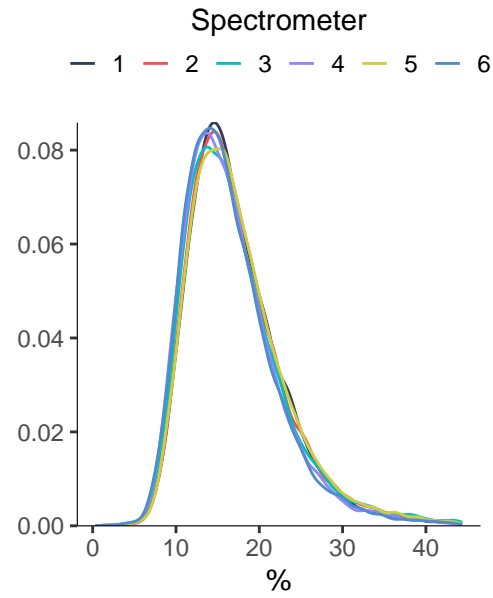
XL_VLDL_PL_pct



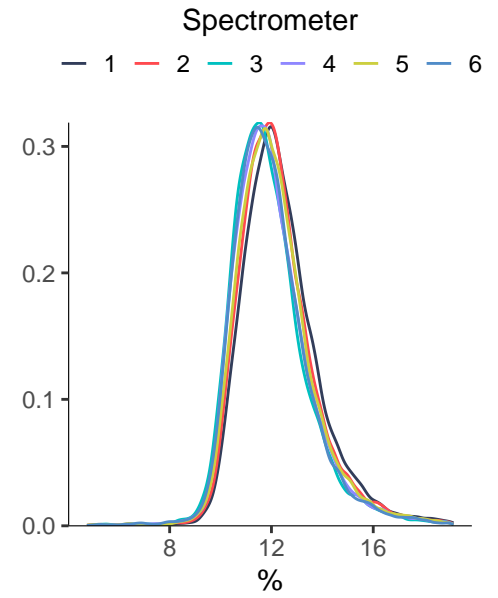
XL_VLDL_C_pct



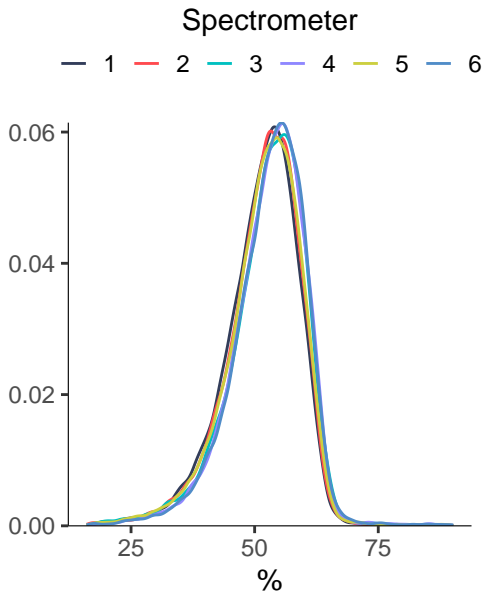
XL_VLDL_CE_pct



XL_VLDL_FC_pct

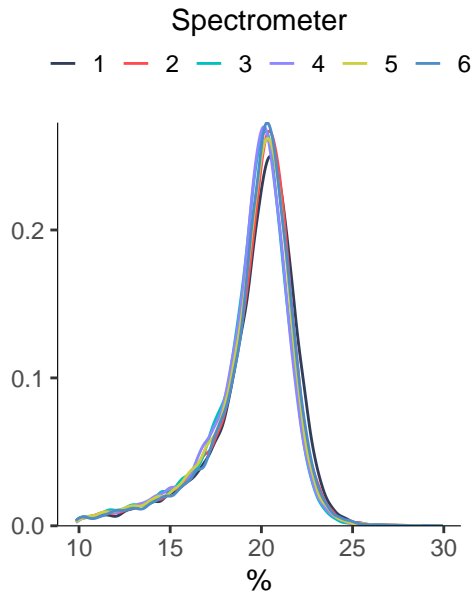


XL_VLDL_TG_pct

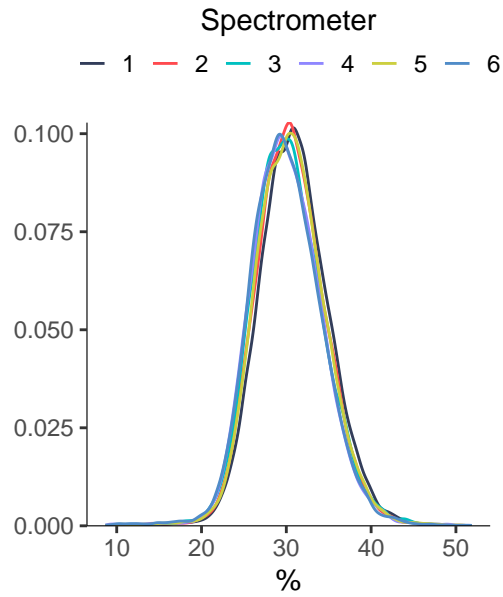


Large VLDL ratios

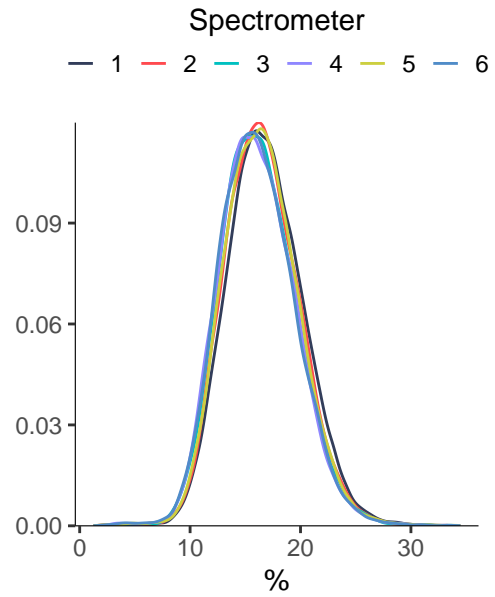
L_VLDL_PL_pct



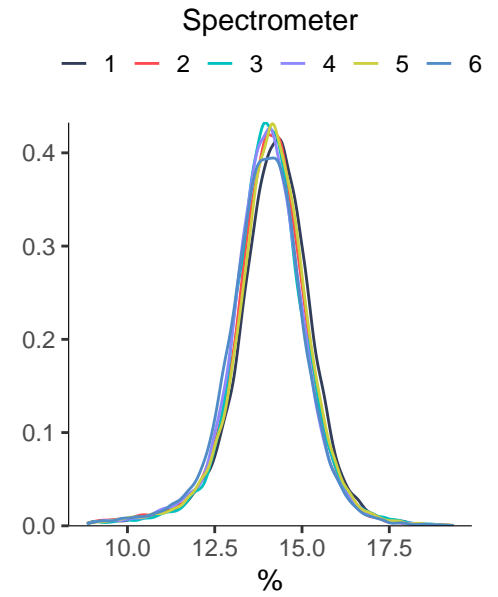
L_VLDL_C_pct



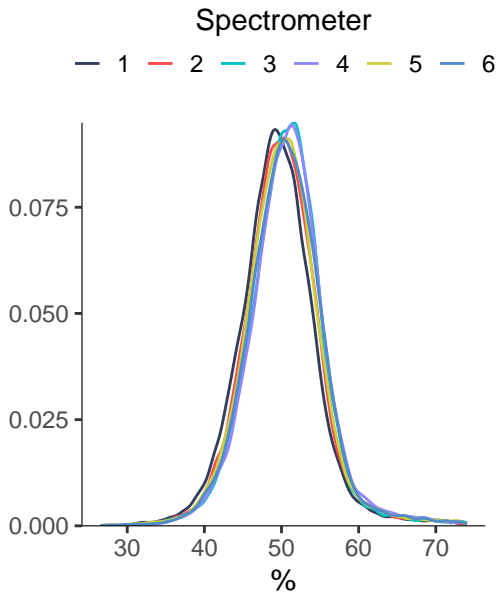
L_VLDL_CE_pct



L_VLDL_FC_pct

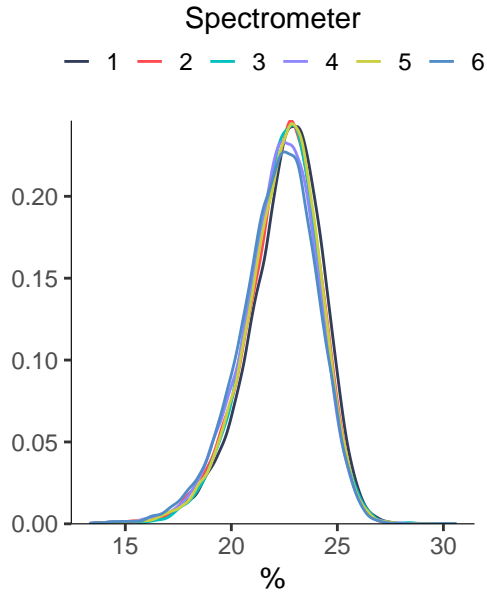


L_VLDL_TG_pct

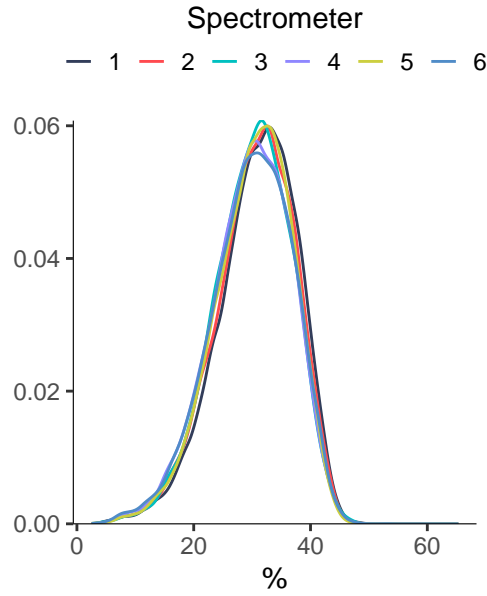


Medium VLDL ratios

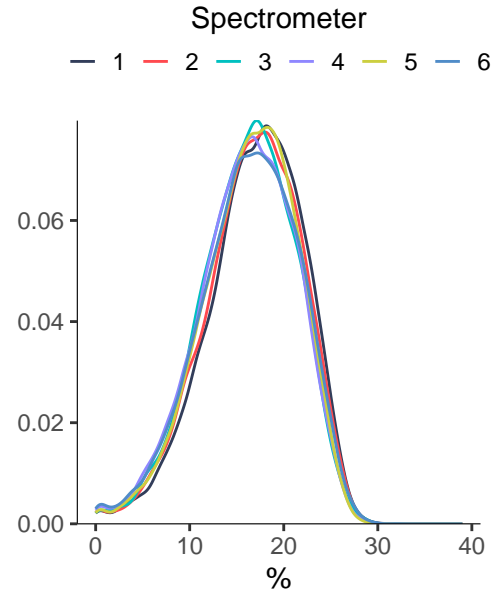
M_VLDL_PL_pct



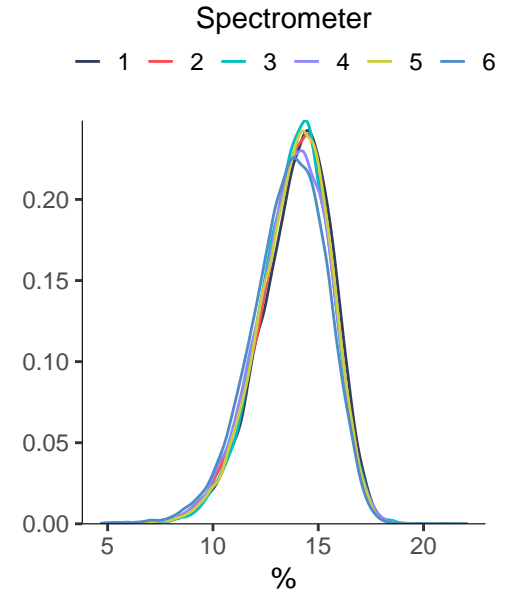
M_VLDL_C_pct



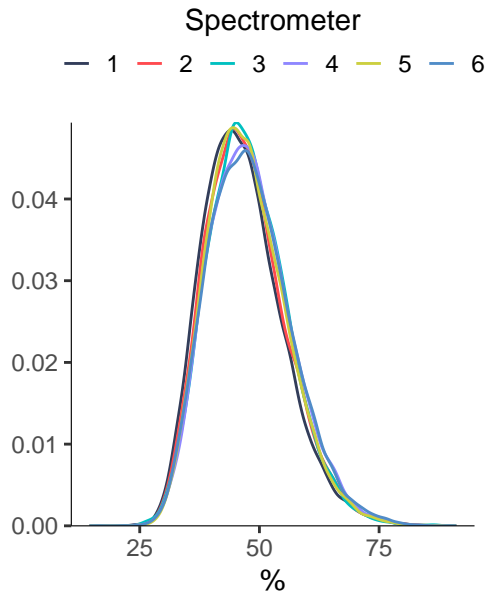
M_VLDL_CE_pct



M_VLDL_FC_pct

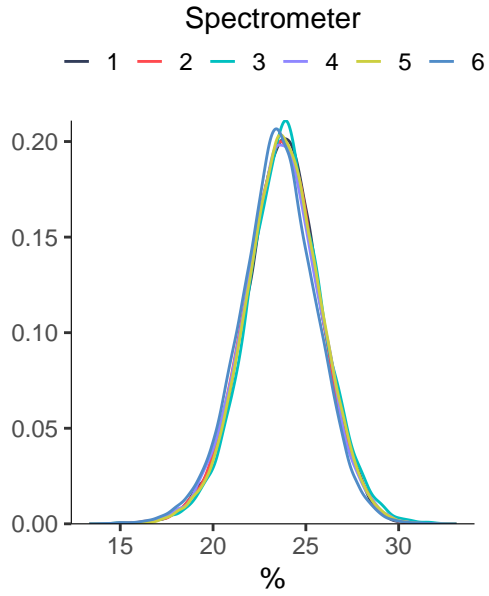


M_VLDL_TG_pct

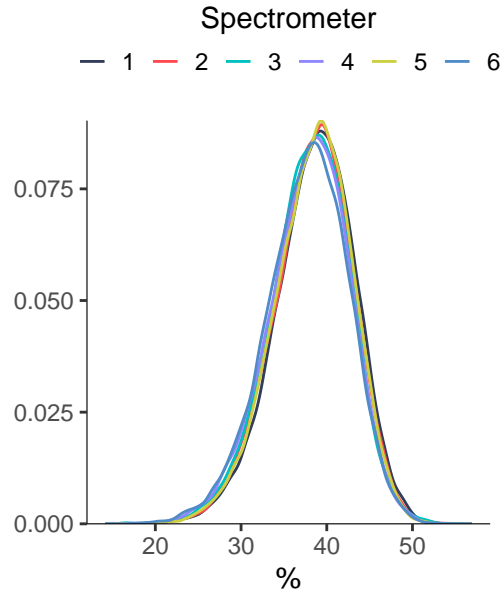


Small VLDL ratios

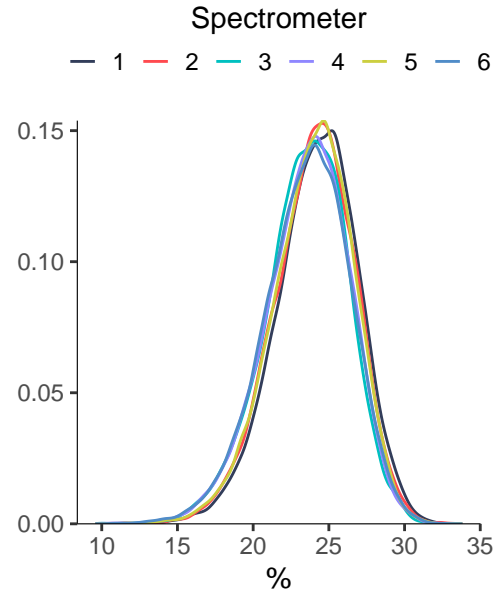
S_VLDL_PL_pct



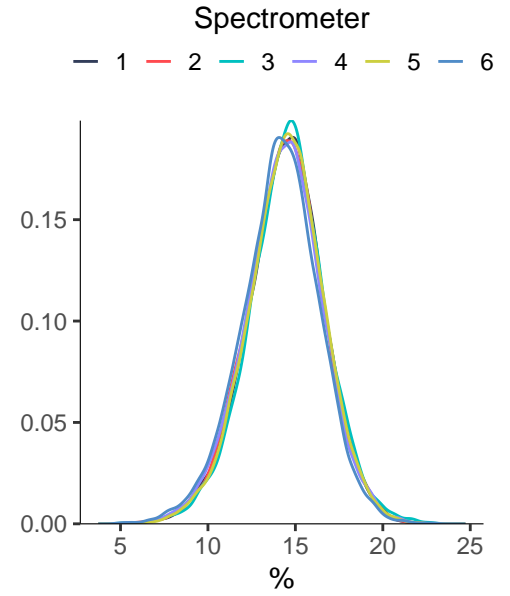
S_VLDL_C_pct



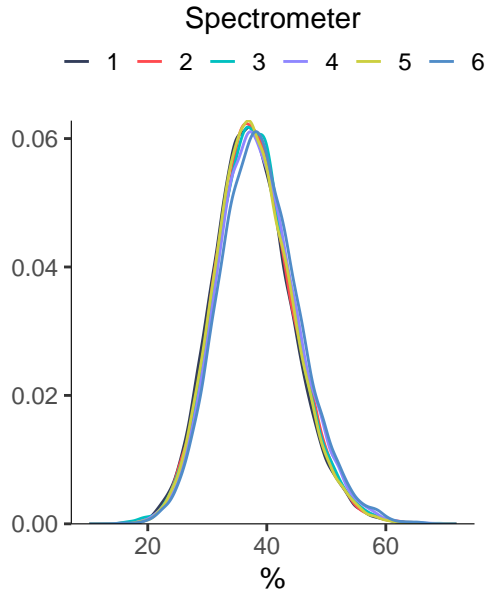
S_VLDL_CE_pct



S_VLDL_FC_pct

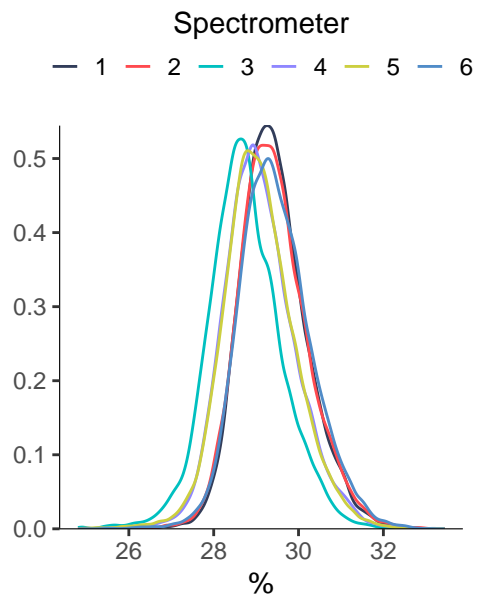


S_VLDL_TG_pct

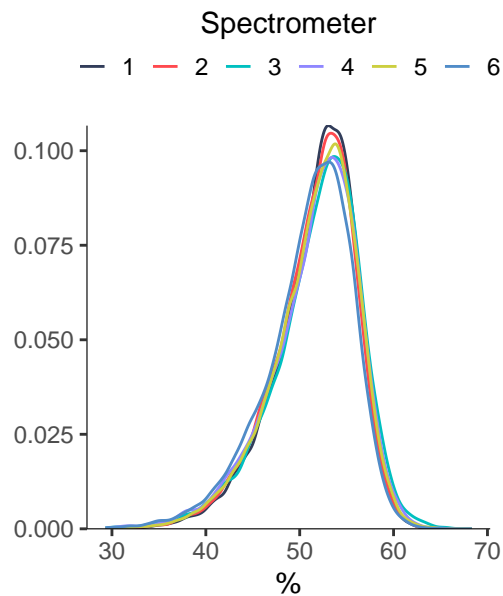


Very small VLDL ratios

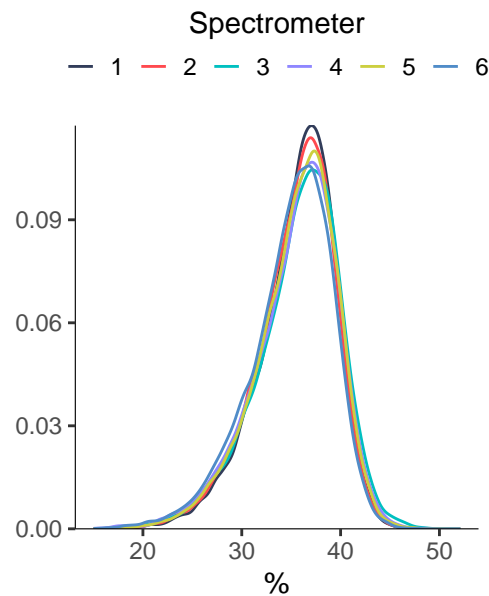
XS_VLDL_PL_pct



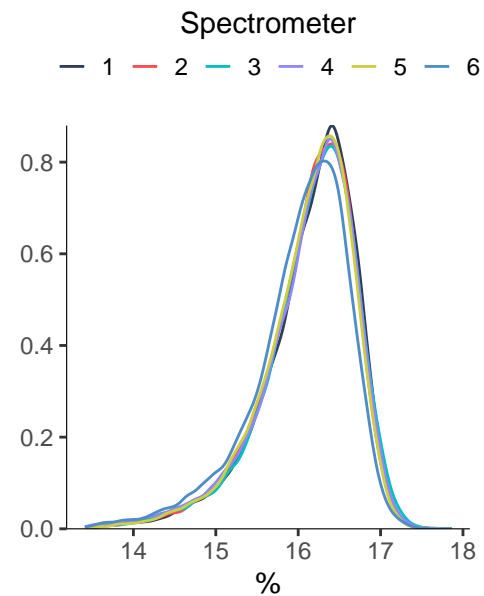
XS_VLDL_C_pct



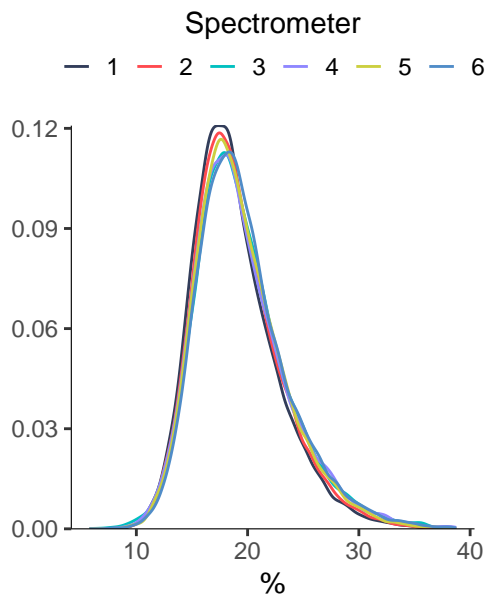
XS_VLDL_CE_pct



XS_VLDL_FC_pct

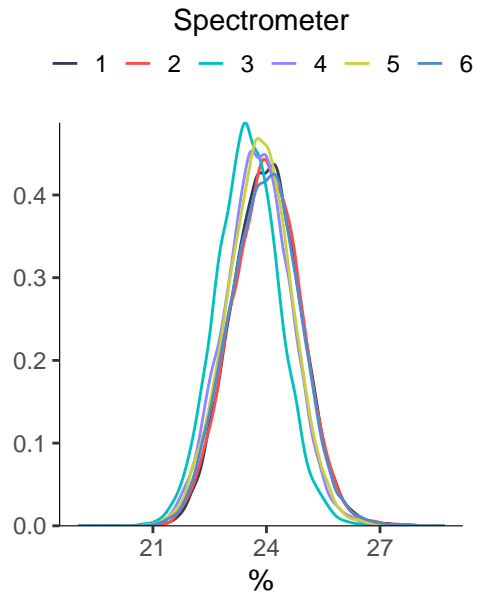


XS_VLDL_TG_pct

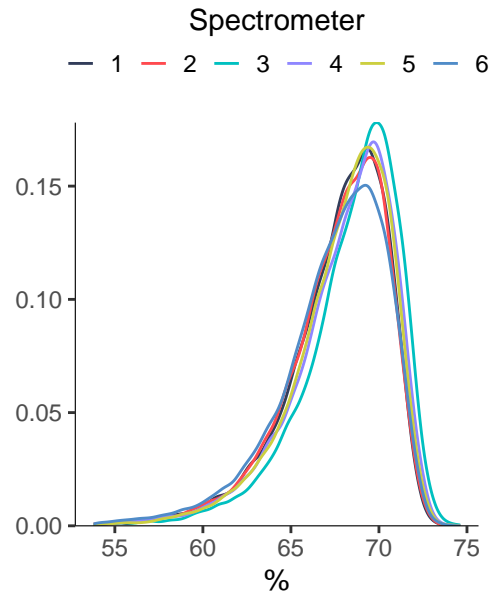


IDL ratios

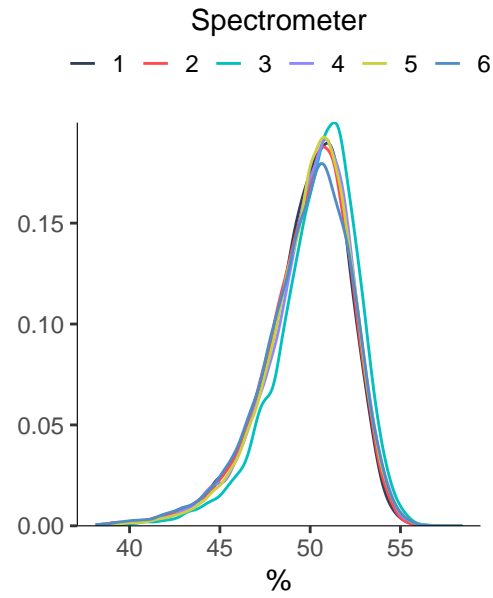
IDL_PL_pct



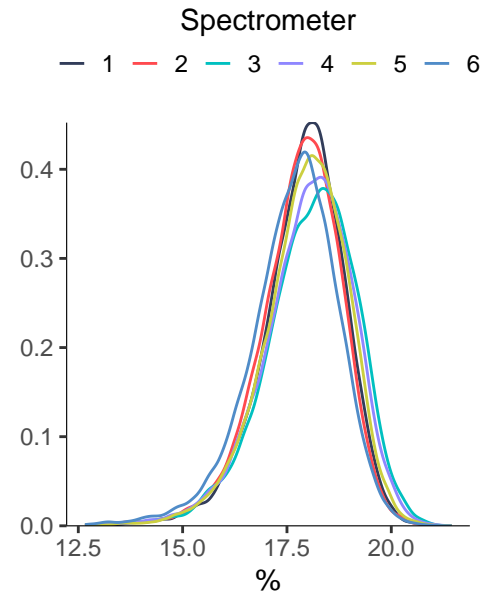
IDL_C_pct



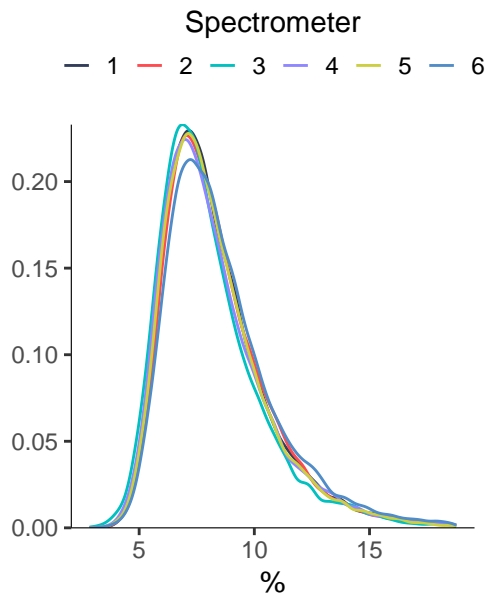
IDL_CE_pct



IDL_FC_pct

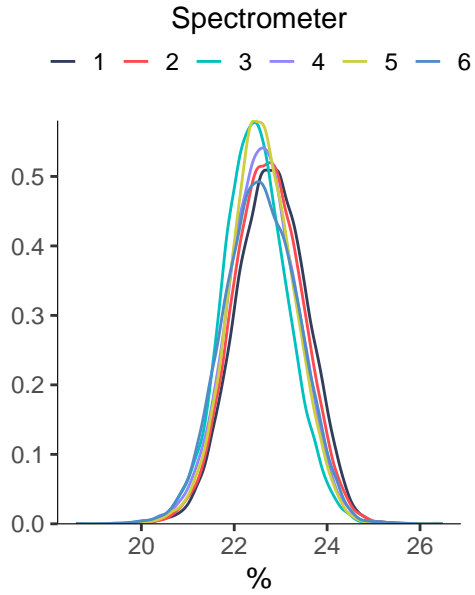


IDL_TG_pct

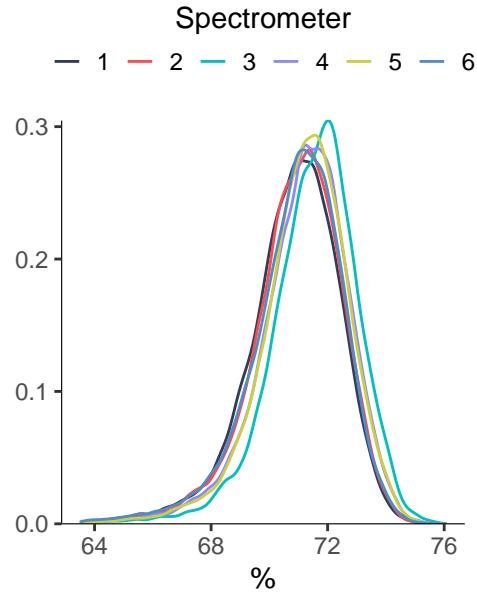


Large LDL ratios

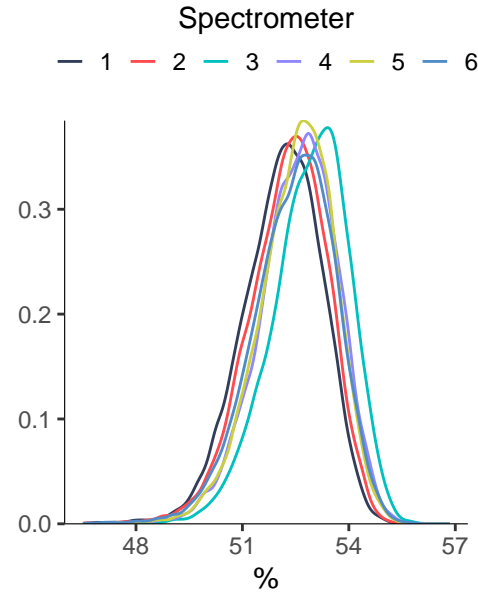
L_LDL_PL_pct



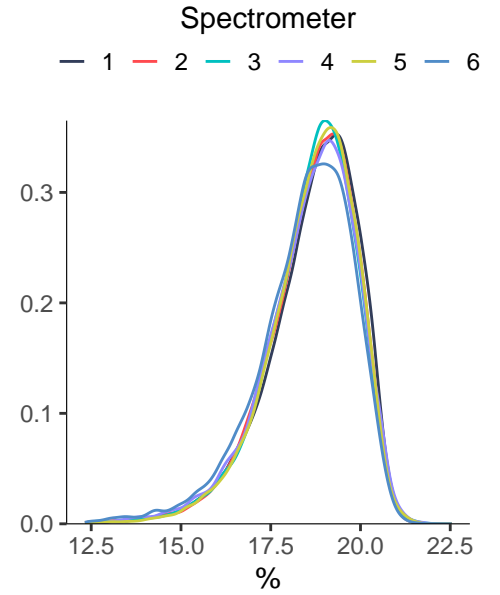
L_LDL_C_pct



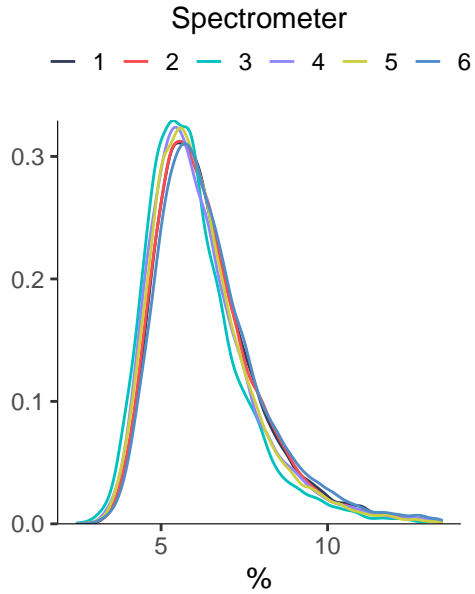
L_LDL_CE_pct



L_LDL_FC_pct

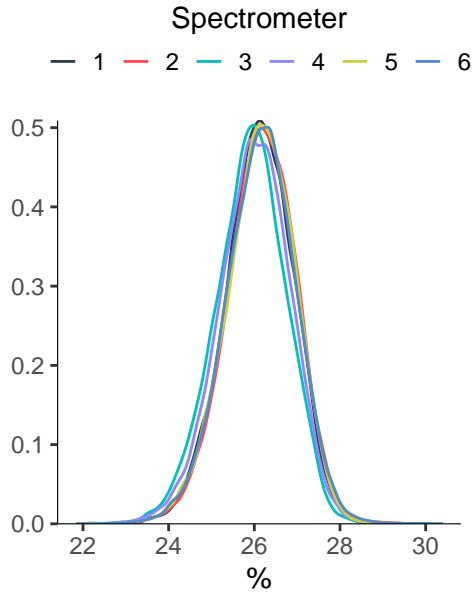


L_LDL_TG_pct

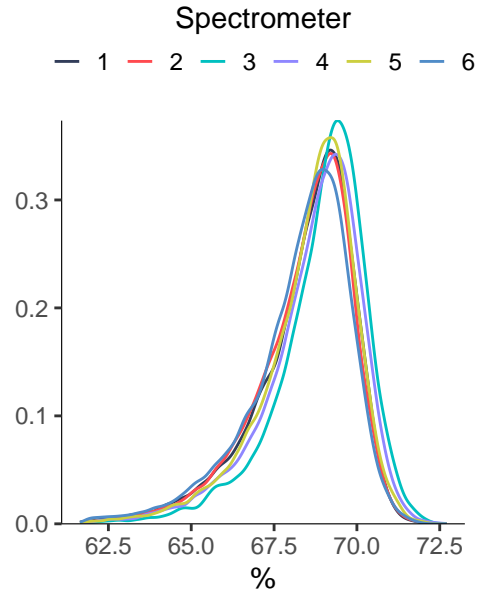


Medium LDL ratios

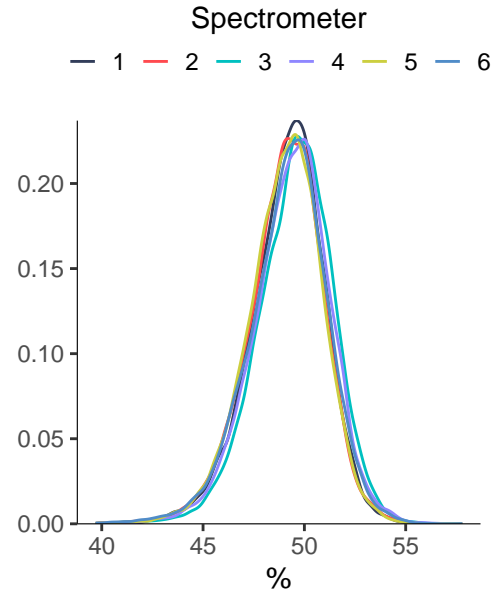
M_LDL_PL_pct



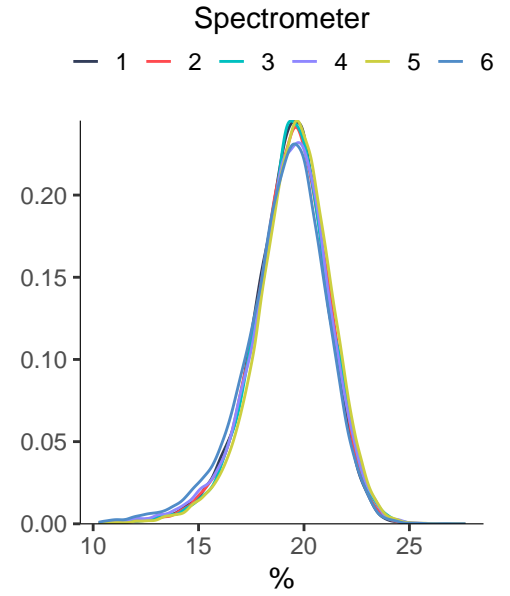
M_LDL_C_pct



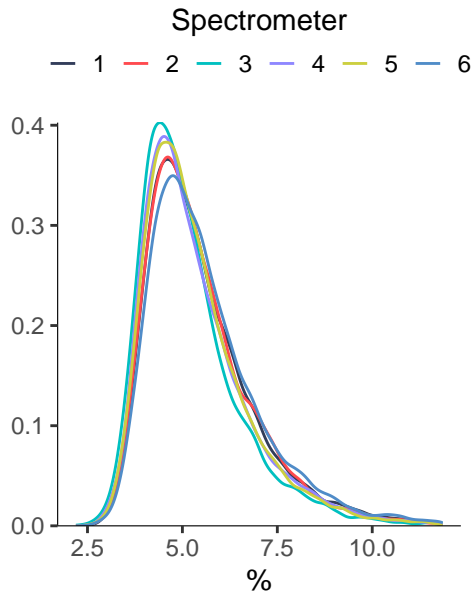
M_LDL_CE_pct



M_LDL_FC_pct



M_LDL_TG_pct

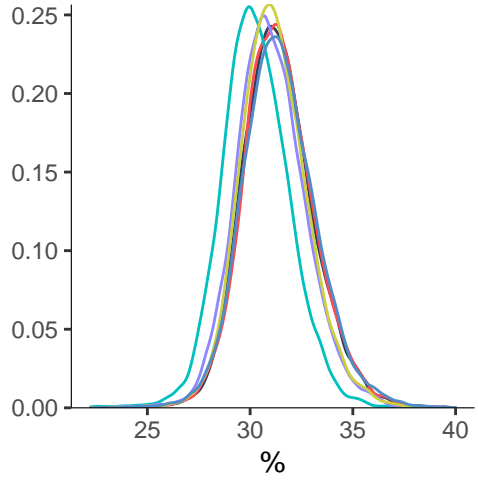


Small LDL ratios

S_LDL_PL_pct

Spectrometer

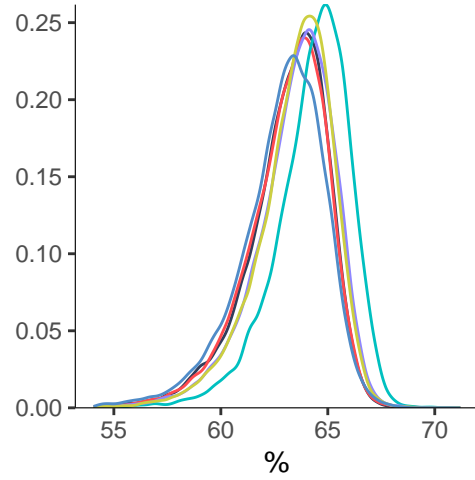
— 1 — 2 — 3 — 4 — 5 — 6



S_LDL_C_pct

Spectrometer

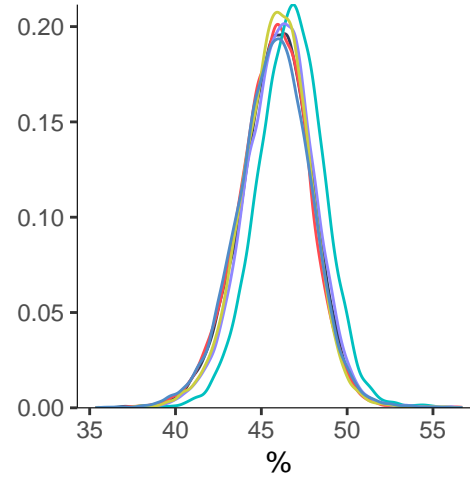
— 1 — 2 — 3 — 4 — 5 — 6



S_LDL_CE_pct

Spectrometer

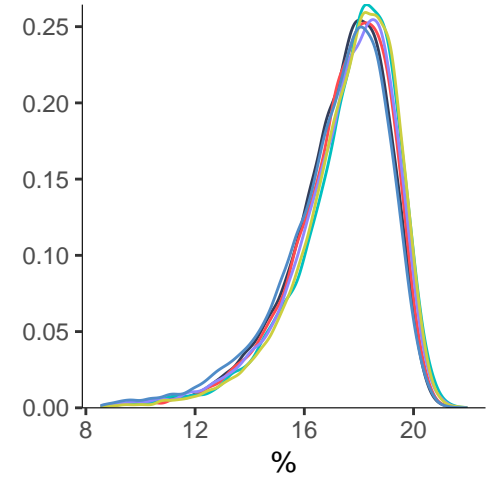
— 1 — 2 — 3 — 4 — 5 — 6



S_LDL_FC_pct

Spectrometer

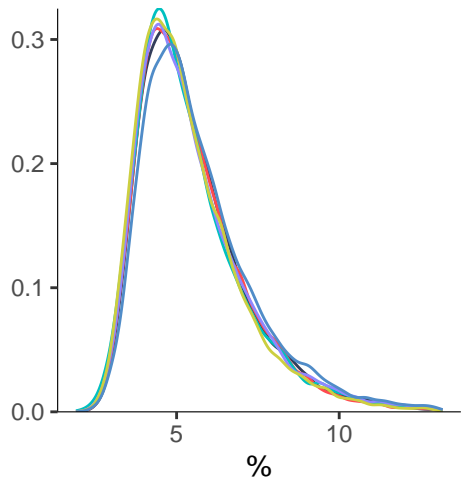
— 1 — 2 — 3 — 4 — 5 — 6



S_LDL_TG_pct

Spectrometer

— 1 — 2 — 3 — 4 — 5 — 6

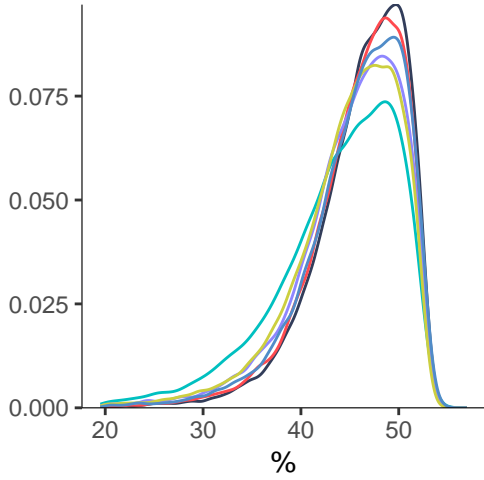


Very large HDL ratios

XL_HDL_PL_pct

Spectrometer

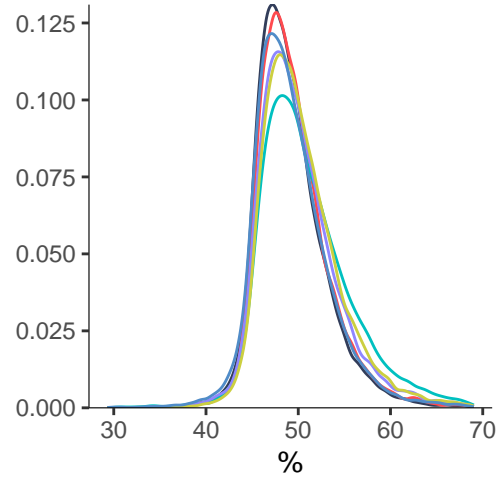
— 1 — 2 — 3 — 4 — 5 — 6



XL_HDL_C_pct

Spectrometer

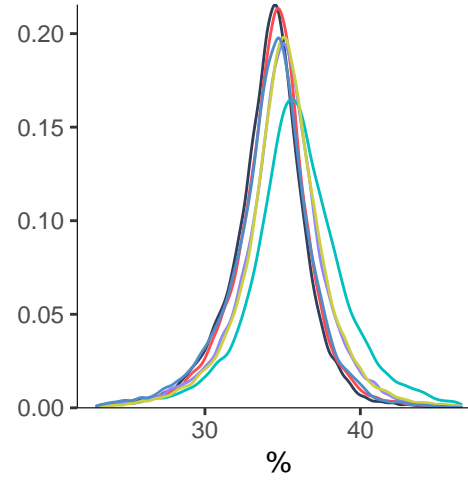
— 1 — 2 — 3 — 4 — 5 — 6



XL_HDL_CE_pct

Spectrometer

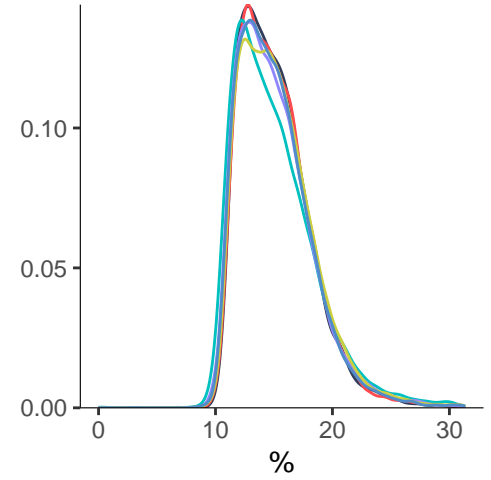
— 1 — 2 — 3 — 4 — 5 — 6



XL_HDL_FC_pct

Spectrometer

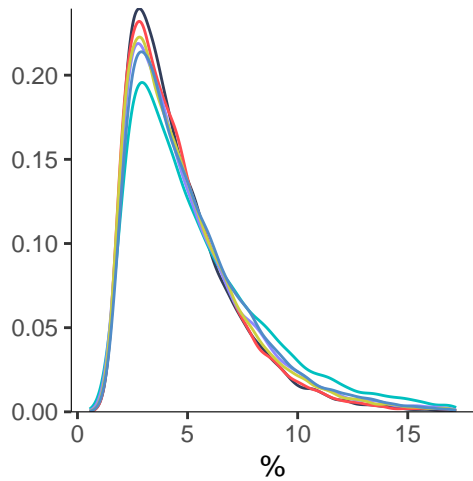
— 1 — 2 — 3 — 4 — 5 — 6



XL_HDL_TG_pct

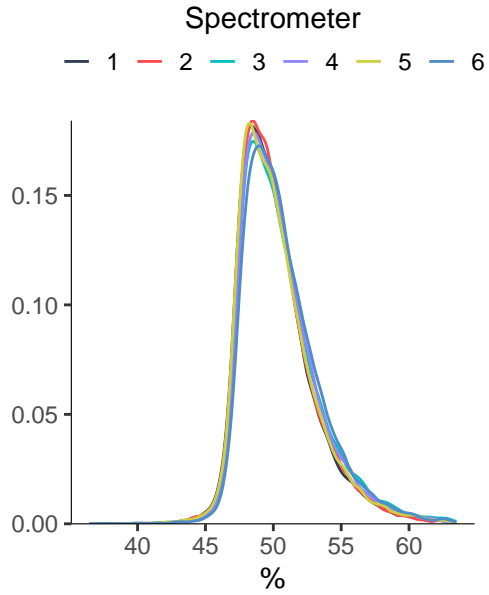
Spectrometer

— 1 — 2 — 3 — 4 — 5 — 6

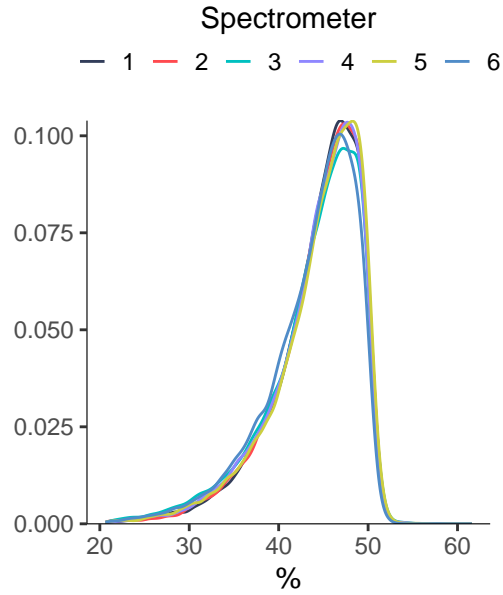


Large HDL ratios

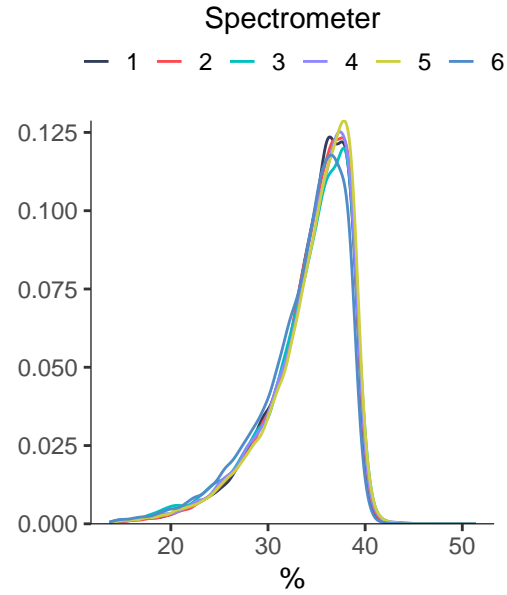
L_HDL_PL_pct



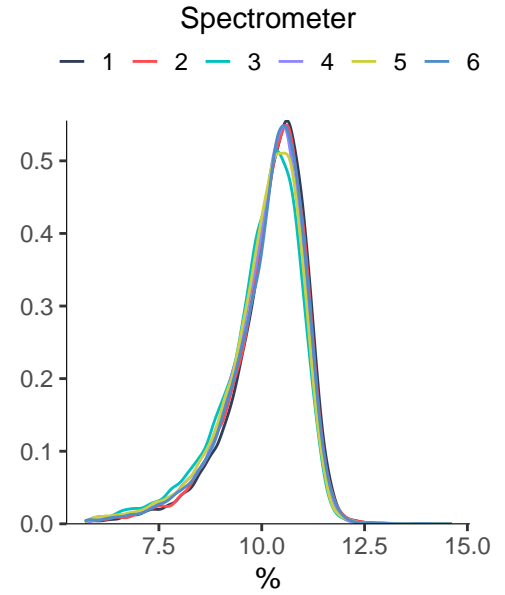
L_HDL_C_pct



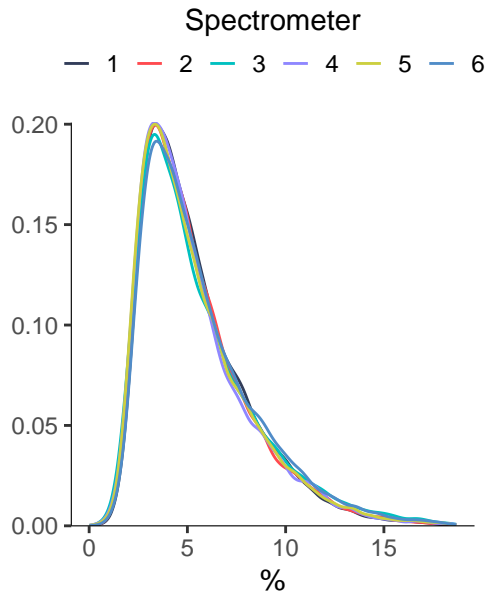
L_HDL_CE_pct



L_HDL_FC_pct

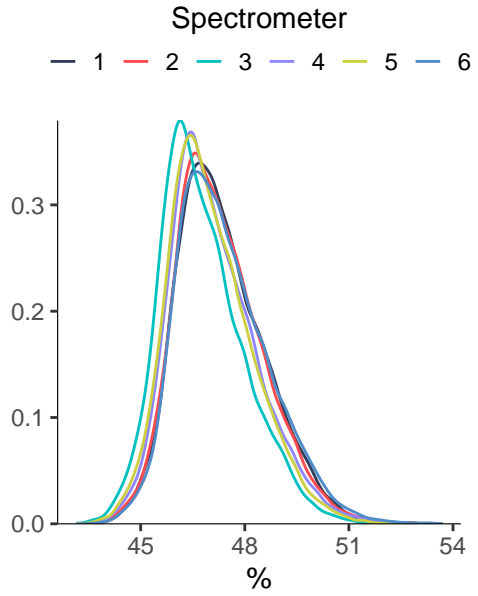


L_HDL_TG_pct

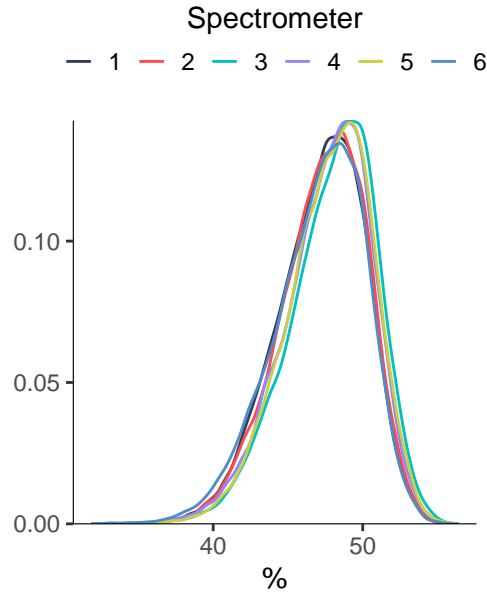


Medium HDL ratios

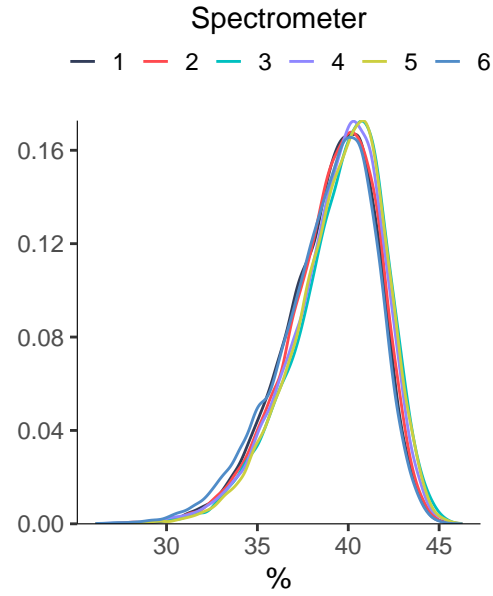
M_HDL_PL_pct



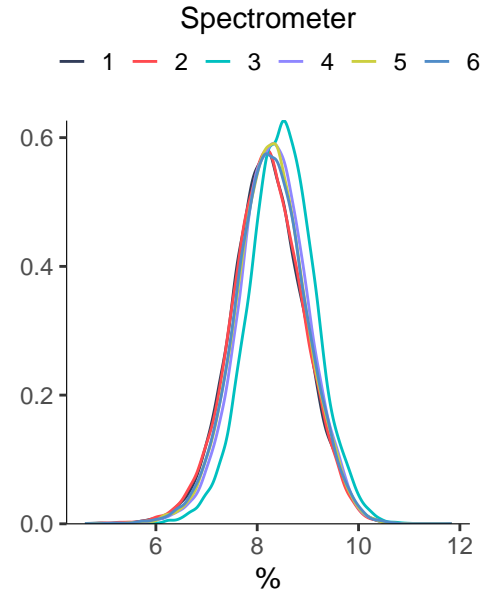
M_HDL_C_pct



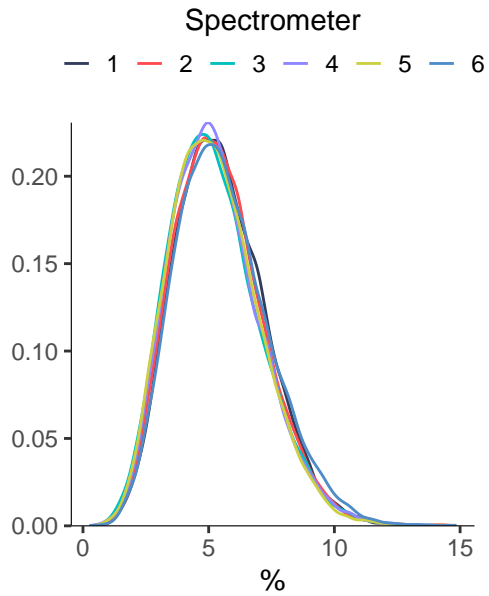
M_HDL_CE_pct



M_HDL_FC_pct

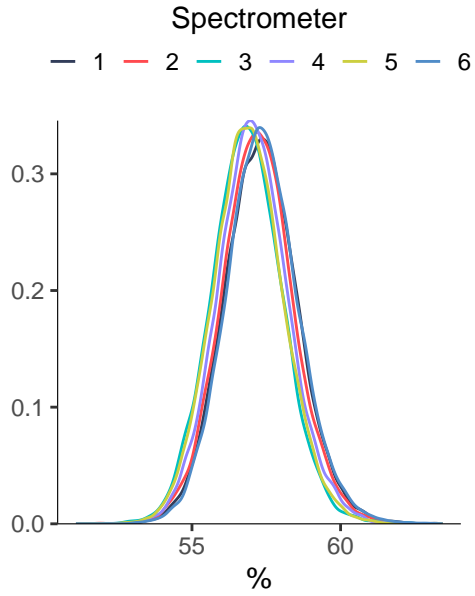


M_HDL_TG_pct

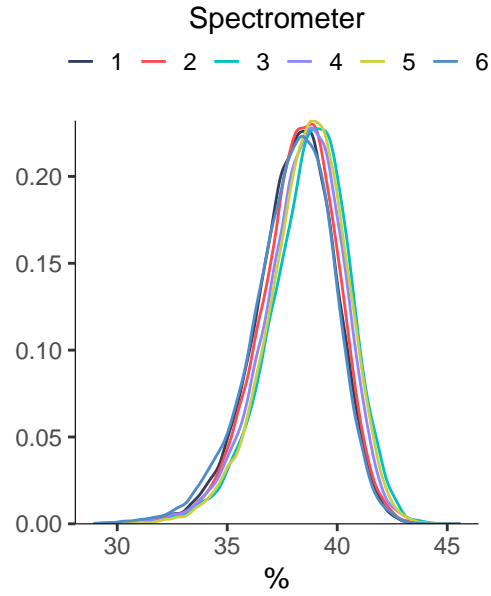


Small HDL ratios

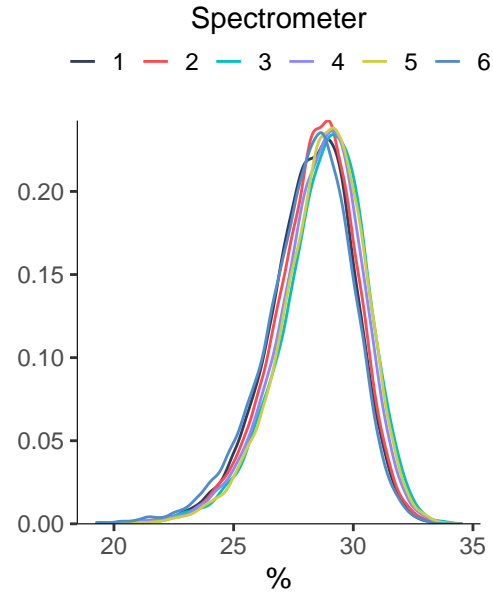
S_HDL_PL_pct



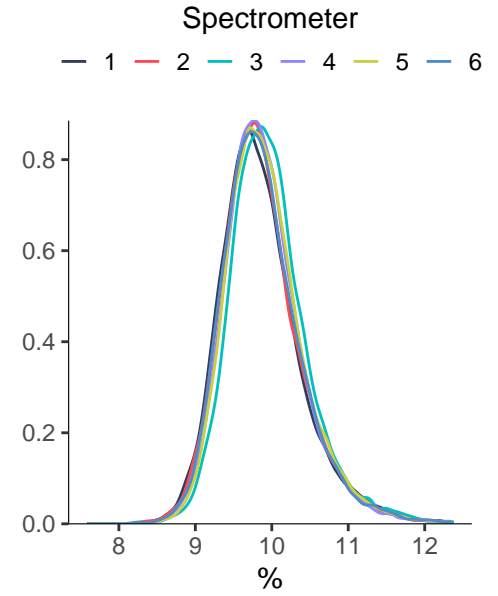
S_HDL_C_pct



S_HDL_CE_pct



S_HDL_FC_pct



S_HDL_TG_pct

